

# **S+ARCK<sup>®</sup>**

## *USE AND CARE MANUAL*

**1875 WATT  
HAIR DRYER WITH  
FINGER DIFFUSER,  
CONCENTRATOR AND  
STORAGE BOX**

**Model PS607**

# IMPORTANT SAFEGUARDS

When using electrical appliances, especially when children are present, basic safety precautions should always be followed, including the following:

**READ ALL INSTRUCTIONS BEFORE USING.**

**KEEP AWAY FROM WATER.**

**DANGER:** As with most electrical appliances, electrical parts are electrically live even when the switch is off.

To reduce the risk of death by electrical shock:

1. Always unplug the appliance immediately after using.
2. Do not use while bathing.
3. Do not place or store appliance where it can fall or be pulled into a tub or sink.
4. Do not place in or drop into water or any other liquid.
5. If appliance falls into water, unplug it immediately. Do not reach into the water.

**WARNING: TO REDUCE THE RISK OF BURNS,  
ELECTROCUTION. FIRE OR INJURY TO PERSONS:**

1. Do not leave appliance unattended while it is operating or plugged in.
2. Close supervision is necessary when this appliance is used by, on or near children or invalids.
3. Use this appliance only for its intended use as described in this manual. Do not use attachments that are not recommended by the manufacturer.
4. Never operate this appliance if it has a damaged cord or plug, if it is not working properly, if it has been dropped or damaged in any manner or if it has been dropped into water. Take appliance to the nearest authorized service facility for examination and repair.
5. Keep the cord away from hot or heated surfaces. Do not wrap the cord around the appliance.
6. Never block the air openings of the appliance or place it on a soft surface, such as a bed, pillow or couch where the air passages may be blocked. Keep air openings free of lint, hair, etc.
7. Never use while sleeping or while drowsy.
8. Never drop or insert any object into any opening.
9. Do not use outdoors or operate when aerosol (spray) products are being used. Do not operate when oxygen is being administered.
10. Do not direct hot air toward eyes or other heat-sensitive areas.
11. Attachments will become hot during use. Allow them to cool before handling.

## **IMPORTANT SAFEGUARDS** *(Continued)*

12. Do not place Hair Dryer on any surface while it is operating.
13. While using the appliance, keep your hair out of it. Keep hair away from Air Intake Vents.
14. Do not operate with a voltage converter.
15. Do not use an extension cord with this appliance.

## **SAVE THESE INSTRUCTIONS FOR HOUSEHOLD USE ONLY**

## **ADDITIONAL IMPORTANT SAFEGUARDS**

1. Never block Air Intake Grill, as this will cause the unit to overheat. Should this happen, a built-in safety system will operate, and the unit will shut off automatically. At this point, turn the Switch to OFF and wait a while before attempting to operate appliance again. If the unit fails to operate after 10 minutes, it may indicate that the appliance has sustained extensive internal damage.
2. Do not try to repair it yourself. Refer to a qualified appliance repair technician.
3. Never store Hair Dryer or attachments while the Hair Dryer is still operating or when hot from use. Unplug appliance from outlet and allow to cool before attempting to mount Hair Dryer in its Stand or before placing attachments into their Storage Box / Stand.

### ***Polarized Plug***

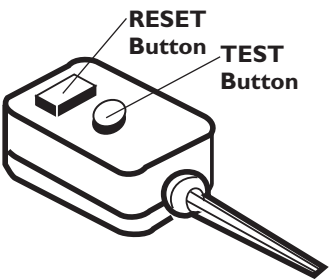
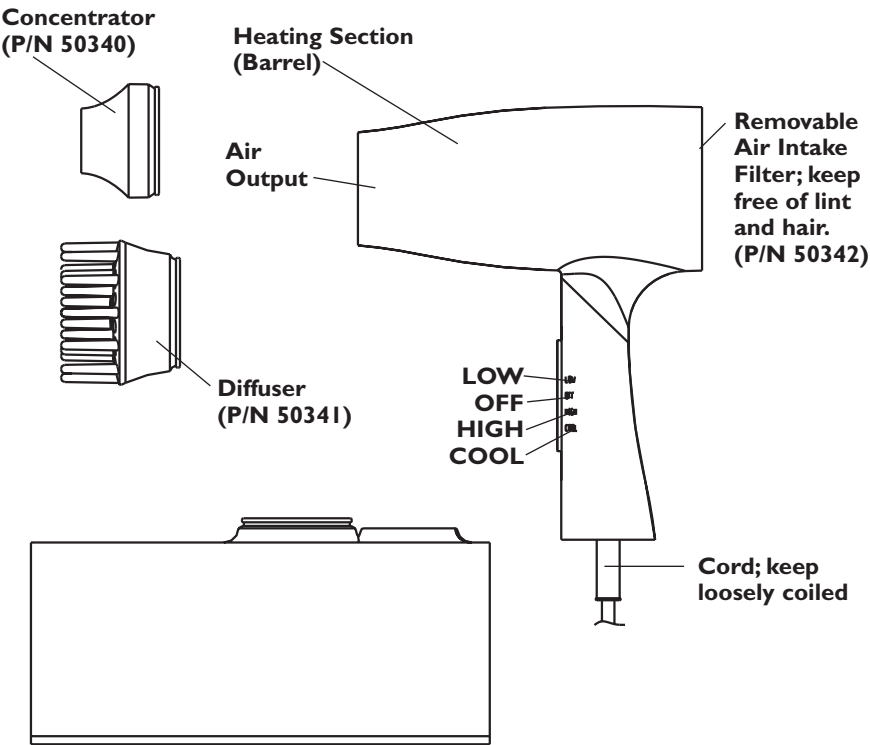
This appliance has a polarized plug (one blade is wider than the other). To reduce the risk of electric shock, this plug is intended to fit into a polarized outlet only one way. If the plug does not fit fully in the outlet, reverse the plug. If it still does not fit, contact a qualified electrician. Do not attempt to modify the plug in any way.

### ***Electric Power***

If the electrical circuit is overloaded with other appliances, your appliance may not operate properly. It should be operated on a separate electrical circuit from other appliances.

# GETTING TO KNOW YOUR HAIR DRYER

PRODUCT MAY VARY SLIGHTLY FROM ILLUSTRATION



**ALCI (Appliance Leakage Circuit Interrupter)**

## **CHECK ALCI SAFETY FEATURE EVERY TIME YOU USE THE DRYER**

This Hair Dryer is equipped with an Appliance Leakage Circuit Interrupter (ALCI), a safety feature that renders it inoperable under some abnormal conditions, such as accidental immersion in water. To make sure the ALCI is functioning properly, perform the following test:

1. Plug the appliance into electrical outlet. Press the RESET Button on the ALCI Safety Device.
2. Press the TEST Button.
3. The Hair Dryer will immediately stop, you will hear an audible click. The RESET Button will pop out. This verifies that the Safety Device is operating properly.
4. Press the RESET Button to reactivate the ALCI Safety Device and use your Hair Dryer.
5. If the ALCI is not functioning properly, call Consumer Service.

**NOTE:** Be sure to repeat test every time you use Hair Dryer to confirm ALCI is operational.

Should this appliance encounter an electrical shock hazard at any time, it will immediately shut off. To restore power, the RESET Button on the ALCI Safety Device must be pressed to reactivate the circuit. If the appliance is immersed in water, do not attempt to reset the ALCI Safety Device. Contact Consumer Service.

# ***HOW TO USE YOUR HAIR DRYER***

## **IMPORTANT**

During the first few minutes of initial use, you may notice smoke and a slight odor. This is normal and will quickly disappear.

1. Remove the Hair Dryer from its Stand.
2. Plug the Dryer into a 120V AC electrical outlet.
3. Test the ALCI plug following the procedure described earlier.
4. Set Dryer to desired setting, (LOW or COOL). Direct Dryer through a section of hair at a time. Direct hot air flow at hair, not scalp and dry/style your hair.

## **CAUTION:**

- **NEVER** block Air Intake Vents, as this will cause the unit to overheat. Keep Air Intake Vents unobstructed and free from hair while drying.
- Heating section should never be touched, as it may be hot and burns may occur.
- This product has been designed to operate safely when held by the Handle. When operating, do not hold it by the AC power cord, Barrel or Motor Housing.
- If the cord appears worn or becomes warm during operation, return unit for inspection and servicing.
- To avoid possible scalp or hair burns, use HIGH setting only when hair is wet. Reduce to LOW or COOL as hair becomes drier.

## ***For Best Results***

- To extend the life of your Hair Dryer, it is advisable to switch it to the lowest setting for a few seconds before shutting it off.
- For maximum air flow, hold Hair Dryer no closer than six inches to the head.
- Do not keep the appliance directed at one place; keep it in constant motion. This is especially important if you are drying a wig, which could be damaged by heat.

**HOT/HIGH SETTING:** For initial hair drying and for most hair styling/setting procedures and hair types.

**COOL/LOW SETTING:** For finishing your hairstyle or for styling fragile, damaged, over-processed or permed hair.

**NOTE:** Whenever you brush hair and partly blow-dry it against its natural growth pattern, you will add bulk to your hair and body to the style. After partially drying hair in this manner, you can then brush hair and blow-style it in the direction you want the finished style to go.

## ***Air Concentrator***

The Air Concentrator attaches easily onto the Barrel of your Hair Dryer and allows you to direct the air flow on a small section of hair at a time as you style and shape hair with a vent brush or comb. You can also build body and fullness into fine, thin hair by directing the air flow against the natural growth pattern of the hair.

## ***Finger Diffuser***

After lightly towel drying the hair, slide the Finger Diffuser onto the Barrel of the Hair Dryer and set the Hair Dryer on LOW or COOL. Place the attachment where volume is desired with shorter fingers positioned toward your forehead. Begin to move your Hair Dryer in small circles, thus creating volume and body. For smoothing, place diffuser at your temple with Hair Dryer at a 45° angle to your head, long fingers at the top; gently move attachment backwards just above the ear, gathering up all the hair. Pull downward toward the ends of the hair to smooth and untangle.

# USER MAINTENANCE INSTRUCTIONS

This appliance contains no user serviceable parts. Do not try to repair this appliance yourself. Refer service, if necessary, to qualified service personnel.

Untwist cord to avoid tangling.

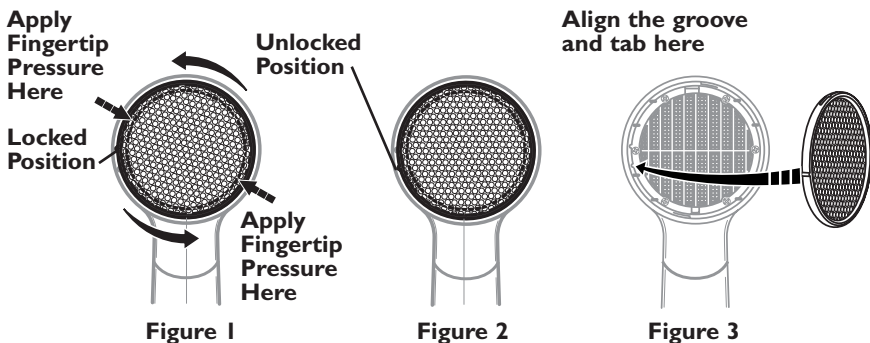
## To Clean

If cleaning is needed, unplug the Hair Dryer and allow it to cool. Use a soft, damp cloth to wipe the Hair Dryer surfaces.

**NOTE:** If the unit is not functioning properly, turn off the unit, unplug and allow to cool. Check the Air Intake Grill to make sure it is free of dust and debris. If it is not clear, remove Filter and clean with a small brush and then try to turn it on again.

**CAUTION:** Do not allow water or any other liquid to get into the Hair Dryer.

**CAUTION:** Check Air Intake Vents to make sure it is free from dust and debris. The Intake Grill should be cleaned occasionally with a small brush to avoid fire hazards.



## To Detach Air Intake Filter

Position your fingers along the inside edge of the Air Intake Filter. (See Figure 1 above.) Apply fingertip pressure on the inside edge and rotate the Air Intake Filter approximately one-quarter turn counter-clockwise. (See Figure 2.) Turn the Hair Dryer so that the Air Intake Filter is facing downward and the Air Intake Filter should fall into your hand.

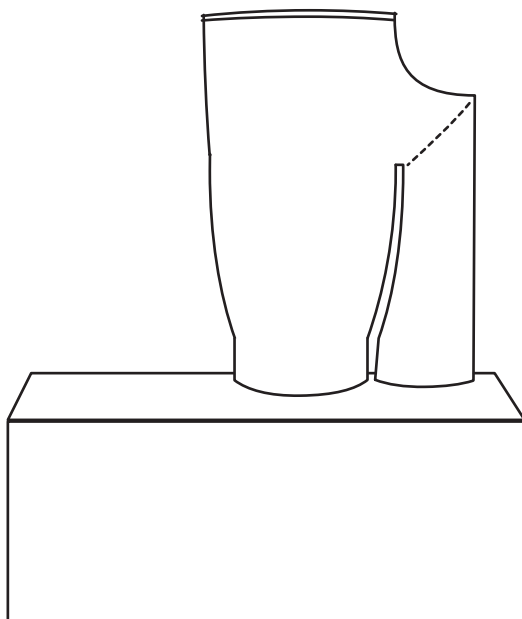
## To Attach Air Intake Filter

Align the groove on the inside surface of the Air Intake Filter with the tab on the rear of the Hair Dryer. (See Figure 3.) Insert the Air Intake Filter and turn approximately one-quarter turn clockwise to tighten.



## ***Using the Storage Box / Stand***

Unplug appliance, allow to cool, and store on its Stand.



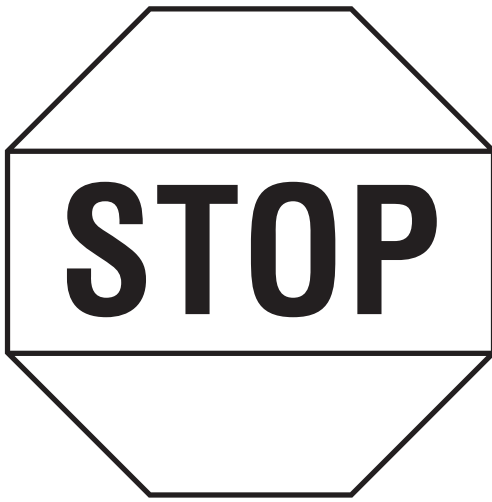
### **To Properly Mount Hair Dryer onto the Storage Box / Stand:**

Make sure attachments are removed before attempting to store the Hair Dryer. Rotate Hair Dryer Handle down to compact position. Place cord inside of the Storage Box / Stand and pull Handle end of the cord through the opening on the end of the Storage Box Cover. Place the Hair Dryer face down and snap Air Output end onto the circular opening on top of the Storage Box / Stand.

### **To Remove the Hair Dryer from the Storage Box / Stand:**

With one hand, hold the Storage Box Cover while carefully, but firmly, lifting the Dryer from the Storage Box / Stand. Open the Handle and twist to full position to use.

Never store Hair Dryer while it is hot or still plugged in. Never wrap the cord tightly around the appliance. Never hang unit by the cord. Do not put any stress on the cord where it enters the unit, as it could cause the cord to fray and break.



**G**<sub>ROUND</sub>

**F**<sub>AULT</sub>

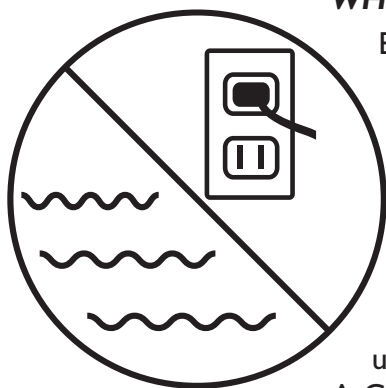
**C**<sub>IRCUIT</sub>

**I**<sub>NTERRUPTERS</sub>

***...can save a life***

# ***IF YOU MUST USE YOUR HAIR DRYER IN THE BATHROOM, INSTALL A GFCI NOW!***

Your local electrician can help you decide which type is best for you — a portable unit that plugs into the electrical outlet, or a permanent unit installed by your electrician. The National Electrical Code now requires GFCI's in the bathroom, garage, and outdoor outlets of all new homes.



## ***WHY DO YOU NEED A GFCI?***

Electricity and water don't mix! If your Hair Dryer falls in water while it is plugged in, the electric shock can kill you even if the switch is OFF!

A regular fuse or circuit breaker won't protect you under these circumstances.

A GFCI offers you far greater protection.

***A GFCI CAN SAVE YOUR LIFE! COMPARED TO THAT,  
THE PRICE IS SMALL! Don't wait, install one now!***

GFCI is a sensitive device which reacts immediately to a small electric current leak by stopping the electricity flow.

# LIMITED ONE YEAR WARRANTY

**Warranty:** This product is warranted by Salton, Inc. to be free from defects in materials or workmanship for a period of (1) year from the original purchase date. This product warranty covers only the original consumer purchaser of the product.

**Warranty Coverage:** This warranty is void if the product has been damaged by accident in shipment, unreasonable use, misuse, neglect, improper service, commercial use, repairs by unauthorized personnel, normal wear and tear, improper assembly, installation or maintenance abuse or other causes not arising out of defects in materials or workmanship. This warranty is effective only if the product is purchased and operated in the USA, and does not extend to any units which have been used in violation of written instructions furnished with the product or to units which have been altered or modified or to damage to products or parts thereof which have had the serial number removed, altered, defaced or rendered illegible.

**Implied Warranties:** ANY IMPLIED WARRANTIES WHICH THE PURCHASER MAY HAVE ARE LIMITED IN DURATION TO ONE (1) YEAR FROM THE DATE OF PURCHASE. Some states do not allow limitations on how long an implied warranty lasts, so the above limitation may not apply to you.

**Warranty Performance:** During the above one-year warranty period, a product with a defect will be either repaired or replaced with a reconditioned comparable model (at our option) when the product is returned to the Repair Center, or the purchase price refunded. The repaired or replacement product will be in warranty for the balance of the one-year warranty period and an additional one-month period. No charge will be made for such repair or replacement.

**Service and Repair:** Should the appliance malfunction, you should first call toll-free 1 (800) 934-7455 between the hours of 9:00 am and 5:00 pm Central Standard Time and ask for CONSUMER SERVICE stating that you are a consumer with a problem. Please refer to model number PS607 when you call.

**In-Warranty Service (USA):** For an appliance covered under the warranty period, no charge is made for service or postage. Call for return authorization 1 (800) 934-7455.

**Out-of-Warranty Service:** A flat rate charge by model is made for out-of-warranty service. Include \$8.00 (U.S.) for return shipping and handling. We will notify you by mail of the amount of the charge for service and require you to pay in advance for the repair or replacement.

**For Products Purchased in the USA, but Used in Canada:** You may return the product insured, packaged with sufficient protection, and postage and insurance prepaid to the USA address listed below. Please note that all customs duty / brokerage fees, if any, must be paid by you and we will require you to pay the cost of customs duty / brokerage fees to us in advance of our performing any service.

**Risk During Shipment:** We cannot assume responsibility for loss or damage during incoming shipment. For your protection, carefully package the product for shipment and insure it with the carrier. Be sure to enclose the following items with your appliance: any accessories related to your problem, your full return address and daytime phone number, a note describing the problem you experienced, a copy of your sales receipt or other proof of purchase to determine warranty status. C.O.D. shipments cannot be accepted.

**To return the appliance, ship to:**

ATTN: Repair Center  
Salton, Inc.  
708 South Missouri Street  
Macon, MO 63552

**To contact us, please write to, call, or email:**

Salton, Inc.  
P.O. Box 7366  
Columbia, MO 65205-7366  
1 (800) 934-7455  
E-mail: Salton@Saltonusa.com

**Limitation of Remedies:** No representative or person is authorized to assume for Salton, Inc. any other liability in connection with the sale of our products. There shall be no claims for defects or failure of performance or product failure under any theory of tort, contract or commercial law including, but not limited to negligence, gross negligence, strict liability, breach of warranty and breach of contract. Repair, replacement or refund shall be the sole remedy of the purchaser under this warranty, and **in no event shall Salton be liable for any incidental or consequential damages, losses or expenses.** Some states do not allow the exclusion or limitation of incidental or consequential damages, so the above limitation or exclusion may not apply to you.

**Legal Rights:** This warranty gives you specific legal rights, and you may also have other rights which vary from state to state.

For more information on Salton products: visit our website: [www.salton-maxim.com](http://www.salton-maxim.com)

©2002 Salton, Inc. All rights reserved.  
Made in China

P/N 60977  
3/02

