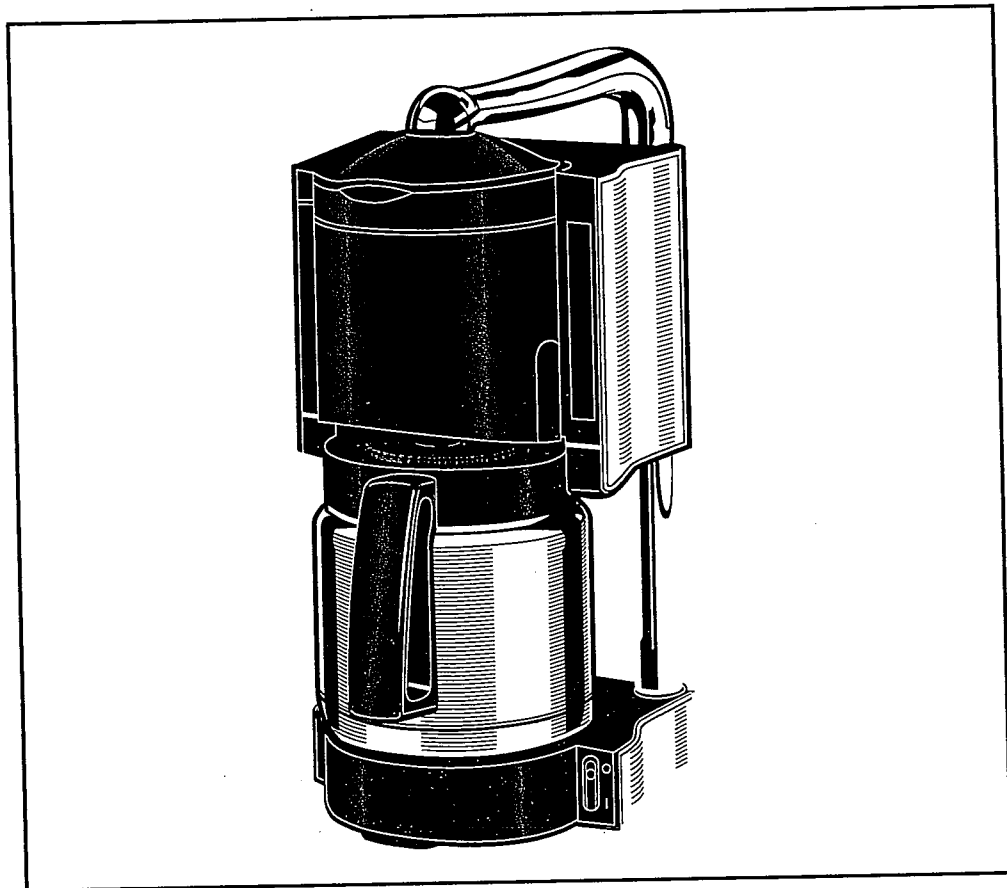


cook's essentials[®]

HIGH PERFORMANCE KITCHENWARE



10-CUP THERMAL COFFEEMAKER

MODEL CECF10T
OWNER'S MANUAL

IMPORTANT SAFEGUARDS

WARNING: A risk of fire and electric shock exists in all electrical appliances and may cause personal injury or death. Please follow all safety instructions, including the following:

- 1.** READ ALL INSTRUCTIONS BEFORE USE.
- 2.** Do not use outdoors or while standing in a damp area.
- 3.** Do not touch hot surfaces. Use handles.
- 4.** To protect against fire, electric shock, and injury to persons, do not immerse Cord, Plug or the appliance in water or any other liquid.
- 5.** Do not operate this or any appliance with a frayed or damaged cord or plug, or after the appliance malfunctions or has been dropped or damaged in any manner. Contact consumer service for repair information.
- 6.** Do not allow cord to hang over the edge of a table or counter or touch hot surfaces.
- 7.** Do not place on or near a hot gas or electric burner or in a heated oven.
- 8.** Unplug product from wall outlet when not in use and before cleaning. Allow to cool before putting on or taking off parts and before cleaning.
- 9.** Close supervision is necessary when any appliance is used near children.
- 10.** This appliance is not for use by children.
- 11.** The use of accessory attachments not recommended by the manufacturer may cause fire, electric shock, or injury to persons.
- 12.** Be certain Lids are in place securely before operating appliance.
- 13.** Do not use the appliance for other than its intended use.
- 14.** Do not open or remove Filter Basket or Lids during the brewing cycle; scalding may occur.
- 15.** Do not set a hot carafe on a wet or cold surface.
- 16.** Never use the Carafe on a range top or in a microwave oven.
- 17.** Do not use a Carafe having a loose or weakened handle. Use only the designated Carafe with your 10-Cup Thermal Coffeemaker.
- 18.** Do not move entire unit when Carafe contains hot liquid.
- 19.** Do not pour liquid other than water and the cleaning solution specified in the manual into the Water Chamber. See instructions for cleaning.
- 20.** Do not pour cold water into a hot Carafe; this could damage the Thermal Carafe. Allow Thermal Coffeemaker to cool for approximately 10 minutes before re-filling with water.
- 21.** To disconnect, press the ON/OFF Lever to "O", then remove plug from wall outlet.

SAVE THESE INSTRUCTIONS

THIS PRODUCT IS FOR HOUSEHOLD USE ONLY.

Polarized Plug

This appliance has a polarized plug (one blade is wider than the other). To reduce the risk of electric shock, this plug is intended to fit into a polarized outlet only one way. If the plug does not fit fully into the outlet, reverse the plug. If it still does not fit, contact a qualified electrician. Do not attempt to modify the plug in any way.

Short Cord Instructions

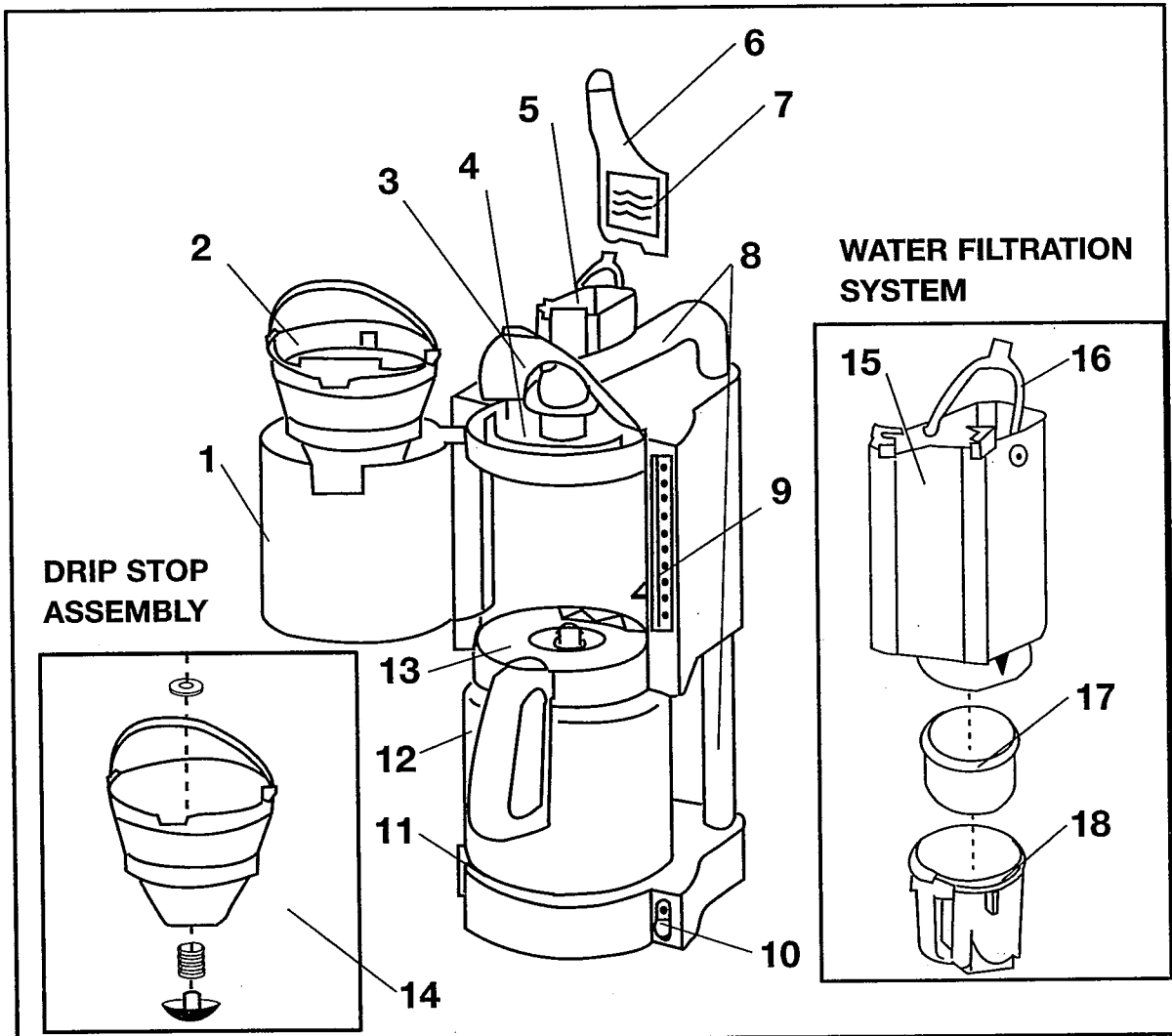
CAUTION: A short power supply cord is provided to reduce the risk of personal injury resulting from becoming entangled in or tripping over a longer cord. Extension cords are available from local hardware stores and may be used if care is exercised in their use. If an extension cord is required, special care and caution is necessary. Also the cord must be: (1) marked with an electrical rating of 125 V, and at least 13 A., 1625 W., and (2) the cord must be arranged so that it will not drape over the countertop or tabletop where it can be pulled on by children or tripped over accidentally.

Electric Power

If the electric circuit is overloaded with other appliances, your appliance will not operate properly. It should be operated on a separate electrical circuit from other appliances.

Getting to Know Your Cook's Essentials®

10-Cup Thermal CoffeeMaker



1. Swing Out Filter Basket
2. Removable Liner Assembly (P/N 30697)
3. Water Reservoir Lid (P/N 30693)
4. Water Reservoir
5. Water Filtration Compartment
6. Charcoal Filter Water Chamber Lid (P/N 30694)
7. Filter Replacement Label
8. Water Pipe System
9. Water Level Indicator
10. ON/OFF Lever with LED
11. Carafe Plate
12. Thermal Carafe with Lid (P/N 30715)
13. Thermal Carafe Lid (P/N 30698)
14. Drip Stop Assembly (P/N 30713)

15. Charcoal Filter Water Chamber with Handle (P/N 30699)
16. Charcoal Filter Water Chamber Handle (P/N 30700)
17. Replaceable Charcoal Filter (P/N 30702)
18. Charcoal Filter Holder (P/N 30701)

Water Filtration System

Introduction

Congratulations on your purchase of the Cook's Essentials® 10-Cup Thermal Coffeemaker. This Coffeemaker is designed with a Thermal Carafe which is insulated to keep liquids hot or cold for extended lengths of time. Because the Thermal Carafe is insulated, the Carafe can be placed anywhere (e.g., on a serving tray, on a countertop, on a dining table) and the liquids will stay hot or cold for an extended length of time. Unlike traditional coffeemakers which require the Carafe to be placed on a Warming Plate to keep the coffee hot, this 10-Cup Thermal Coffeemaker **DOES NOT HAVE A WARMING PLATE**—the Carafe keeps the coffee piping hot!

In addition, your 10-Cup Thermal Coffeemaker has a unique brewing system which has a water filtration system built right in! With the use of the optional Charcoal Filter, the Coffeemaker filters the water before brewing it—resulting in better tasting coffee! The Charcoal Filter works to eliminate the taste and smell of chlorine and other particles from regular tap water. For optimum performance, a handy Filter Label (inside the Charcoal Filter Water Chamber Lid) helps you track Filter usage so you can replace the Charcoal Filter in a timely fashion! You can order a set of 3 replacement Charcoal Filters one set at a time; or, order several sets to keep on hand! And, you always have the option of using the 10-Cup Thermal Coffeemaker without the Charcoal Filter when using bottled or purified water.

Before First Time Use

1. Carefully unpack the 10-Cup Thermal Coffeemaker. Open the Swing Out Filter Basket and remove the Charcoal Filter (see Figure 1). Pull out Removable Liner from Filter Basket. Close Filter Basket. Set the Charcoal Filter and Removable Liner aside on a dry surface.
2. Lift off and remove the Charcoal Filter Water Chamber Lid. Lift out Charcoal Filter Water Chamber (see Figure 2).
3. Wash Charcoal Filter Water Chamber and Removable Liner in warm, soapy water. Rinse well and dry thoroughly. **NOTE: Do not wash in dishwasher. Parts are NOT dishwasher safe!**
4. Replace Removable Liner back into Swing Out Filter Basket. To do so, lift handle and align notch in Removable Liner with opening in Swing Out Basket. Lock Removable Liner into place by lowering handle.
5. While holding Charcoal Filter Water Chamber, grasp Charcoal Filter Holder and turn counter-clockwise as shown. Remove Charcoal Filter Holder from Chamber. See Figure 3.
6. Remove Charcoal Filter from plastic packaging. Place Charcoal Filter into Charcoal Filter Holder.
7. Align tab on side of Charcoal Filter Holder with arrow on side of Charcoal Filter Water Chamber. Push Filter Holder up and turn Filter Holder clockwise to lock into place. See Figure 4.
8. Replace Charcoal Filter Water Chamber (with Charcoal Filter in place) into Water Filtration Compartment. Press Chamber down firmly until it is seated properly. Replace Charcoal Filter Water Chamber Lid.
9. Remove Thermal Carafe from appliance. Loosen the Thermal Carafe Lid by twisting it counter-clockwise until it comes off. **WITHOUT SUBMERGING THE CARAFE**, carefully wash inside of Carafe and Carafe Lid with warm, sudsy water. Rinse inside and dry thoroughly.

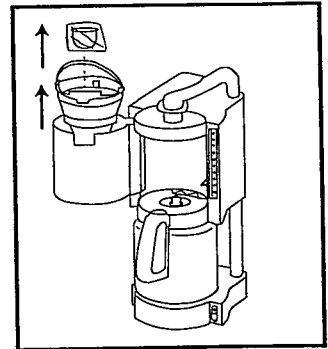


Figure 1

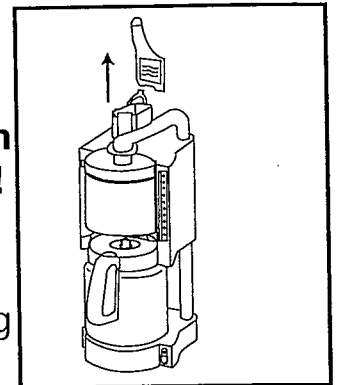


Figure 2

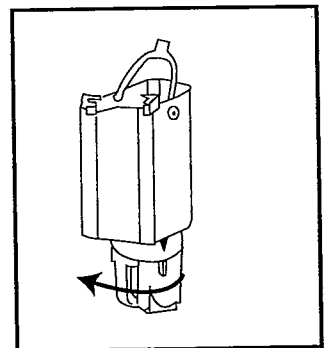


Figure 3

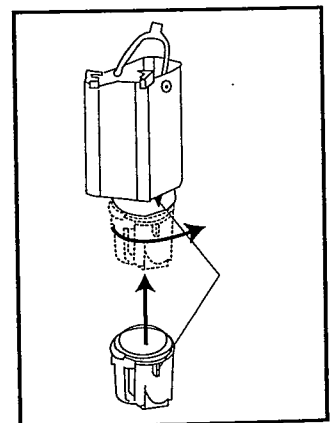


Figure 4

Before First Time Use (Cont.)

NOTE: To prepare your Coffeemaker, we recommend operating your Coffeemaker for two cycles with fresh water only (no coffee grounds).

- 10.** Fill Carafe with **cold** water.
- 11.** Lift the Water Reservoir Lid and carefully pour the water from the Carafe into the Water Reservoir until the Water Level Indicator reaches the "10" marking. Close Water Reservoir Lid.
- 12.** Replace Carafe Lid onto Carafe and turn Lid clockwise until it is tight.
- 13.** Return Carafe to its position on the Carafe Plate.
- 14.** Plug Coffeemaker into a 120V - 60 Hz polarized outlet.
- 15.** Press the ON/OFF Lever to the "I" position. The red "ON" LED will turn on.
- 16.** Once all water has filtered through Coffeemaker, press the ON/OFF Lever to the off "O" position. The red LED will turn off. Loosen Thermal Carafe Lid and pour water from Thermal Carafe. Allow Coffeemaker and Carafe to cool for about 10 minutes, retighten the Thermal Carafe Lid, and repeat the process using fresh water only.

Instructions for Use

The best-tasting coffee begins with quality beans. We recommend using coffee ground specifically for automatic drip coffeemakers. A 5-ounce cup is the American industry standard. Your favorite coffee mug will accommodate about 2 cups (10 oz.) of coffee. We do not recommend preparing less than 4 cups (20 oz.) of coffee.

- 1.** Be sure Replaceable Charcoal Filter is in place inside Charcoal Filter Water Chamber (see "Before First Time Use") and within the "usage period" (see "Replacing the Charcoal Filter" in the "User Maintenance Instructions" section).
- 2.** Remove Thermal Carafe from Carafe Plate. Twist the Thermal Carafe Lid completely until it comes off. For optimal holding temperature, rinse the inside of the Thermal Carafe with warm water, then empty. Fill the Water Reservoir with COLD water to desired level (see Water Indicator Level). For example, fill Water Reservoir to "4" for four 5-ounce cups, "10" for ten 5-ounce cups.
- 3.** Replace Thermal Carafe Lid onto Carafe. Turn clockwise until Lid is closed tightly. Place Thermal Carafe with Lid onto Carafe Plate.

Instructions for Use (Cont.)

4. Open Swing Out Filter Basket. Insert a # 4 cone paper filter into the Removable Liner.
5. Spoon ground coffee—ground specifically for an automatic drip coffeemaker—into the paper filter inside the Filter Basket. Use about one tablespoon of coffee for each 5-ounce cup of coffee. Close the Filter Basket.
6. Press the ON/OFF Lever to the "I" position. The red "ON" LED will turn on.

NOTE: The Thermal Carafe must be in place on the Carafe Plate or the water will not flow.

Caution: The Water Pipe System becomes hot during use!

Water will soon begin flowing into the Water Filtration Compartment, through the ground coffee in the Filter Basket, and coffee will begin to drip into the Thermal Carafe.

If you wish to serve a cup of coffee before the brewing cycle is complete, simply remove the Thermal Carafe from the Carafe Plate (a special Drip Stop feature prevents the coffee from dripping while the Thermal Carafe is removed). Return Carafe to its position on the Carafe Plate within 30 seconds; normal brewing will resume.

CAUTION: If the Carafe is not returned to the Carafe Plate, the coffee may overflow from the Filter Basket.

The specialized Thermal Carafe will keep the coffee at an ideal serving temperature. This way, the coffee will remain hot whether or not the Carafe is kept on the Carafe Plate or on your table.

Caution: Do not expose the Thermal Carafe to extreme temperatures; this may cause the Thermal Carafe to crack or become otherwise damaged. If the Thermal Carafe is hot; do not fill it with cold water or other cool drinks. Likewise, if the Carafe previously held cold liquids, allow it to come to room temperature before filling with hot liquids.

7. Press the ON/OFF Lever to the "O" position to turn the unit OFF. The red "ON" LED will turn off. (If Thermal Coffeemaker is left on, it will turn off automatically about 10 minutes after the brewing cycle.) Allow to cool for 10 minutes between brewing cycles. Unplug Coffeemaker when not in use.
8. To serve coffee, remove the Thermal Carafe and loosen the Carafe Lid by turning it counter-clockwise. The indicator dot should be toward the pour spout to pour coffee. Tighten Lid after serving to maintain temperature and to prevent spilling.

Hints and Tips

- Water Level Indicator markings reflect the quantity of fresh water. The quantity of brewed coffee will be less because the coffee grounds absorb water.
- The Thermal Carafe will keep liquids hot longer if it is completely full. If the Thermal Carafe is only half full, the hot liquids will cool down faster.
- When preparing to put cold drinks in the Thermal Carafe, rinse the inside of the Carafe with cool water. Then, fill with cold liquids as desired. This will help the Carafe maintain the cold temperature.
- If desired, you may use tea leaves instead of ground coffee in the Filter. Whether using tea leaves or ground coffee, always place a #4 cone filter into the Removable Liner before brewing.
- Never use hot or carbonated water. This will damage the appliance.
- Never pour milk, liquid coffee, tea, or any other liquid besides water and the recommended cleaning solution (see "User Maintenance Instructions") into the Water Reservoir.
- Always note the day you begin using a new Charcoal Filter and mark the day on the Filter Replacement Label.
- Always replace the Charcoal Filter after approximately 60 uses or about six weeks (whichever occurs first). A Charcoal Filter which is used for longer than this period will not be effective. **DO NOT ATTEMPT TO CLEAN THE FILTER!**
- To extend the life of the Charcoal Filter, remove the Filter when you are using filtered or bottled water.
- Clean the 10-Cup Thermal Coffeemaker with a water/vinegar solution (as detailed in the "Descaling" section of the "User Maintenance Instructions") if the brewing time slows or if the coffee begins to have an "off" flavor.

User Maintenance Instructions

This Cook's Essentials® 10-Cup Thermal Coffeemaker requires little maintenance. Do not remove bottom cover; it contains no user-serviceable parts. Contact qualified personnel if the product requires servicing.

CAUTION: Do not immerse Coffeemaker, Cord, Plug, Thermal Carafe, or Carafe Lid into water or any other liquid.

Cleaning

To keep your Cook's Essentials® 10-Cup Thermal Coffeemaker operating properly, clean regularly.

1. Unplug Coffeemaker and allow to cool completely before cleaning.
2. Remove Charcoal Filter from Charcoal Filter Water Chamber. Open Swing Out Filter Basket and lift out Removable Liner. Wash Charcoal Filter Water Chamber and Removable Liner in warm, soapy water. Rinse well and dry thoroughly. **DO NOT use harsh or abrasive cleansers as these could damage the parts. Do not wash in dishwasher. Parts are NOT dishwasher safe!**
3. **WITHOUT SUBMERGING THE CARAFE,** carefully hand wash **inside** of Thermal Carafe and Carafe Lid with warm, sudsy water. **Do not use cleaning agents or wire bottle brushes to clean inside the Thermal Carafe!** Rinse inside of Thermal Carafe and dry thoroughly.
4. Wipe Coffeemaker exterior and Thermal Carafe with a damp cloth. Dry completely with a soft cloth. **DO NOT use harsh or abrasive cleansers as these could damage the parts.**

Descaling

We recommend the following steps to prevent scale build-up and mineral deposits in your Cook's Essentials® 10-Cup Thermal Coffeemaker (especially if you have hard water). We recommend descaling once a month if this Coffeemaker is used once or twice a day. Descale immediately if the brewing process slows or if the brewed coffee begins to take on an "off" taste.

1. Press ON/OFF Lever to the "O" position to turn Coffeemaker OFF. Unplug the Coffeemaker from wall outlet. Allow Coffeemaker to cool thoroughly before descaling.
2. Remove entire Water Filtration System (Charcoal Water Filter Chamber, Charcoal Filter, and Charcoal Filter Holder) from Thermal Coffeemaker.
3. Pour 8 ounces of vinegar into the Water Reservoir. Add cold water into the Water Reservoir until the Water Indicator Level reaches the "10-cup" level.

User Maintenance Instructions (CONT.)

Descaling (CONT.)

4. Swing out Filter Basket. Place a clean paper filter into the Removable Liner. Close Filter Basket. **DO NOT ADD COFFEE TO FILTER BASKET!**

CAUTION: Make sure Filter Basket is in place when descaling. This will prevent the solution from "splashing" onto the Carafe.

5. Be sure Carafe Lid is in place and tight on Thermal Carafe. Place Thermal Carafe onto Carafe Plate.
6. Follow steps 6-7 under "Instructions for Use."
7. Once Coffeemaker and the vinegar/water solution have cooled (remove Carafe Lid for faster cooling), pour vinegar/ water solution back into Water Reservoir and repeat the brewing process (steps 6-7 under "Instructions for Use").
8. Once brewing is complete, discard vinegar/water solution. Allow Coffeemaker and Thermal Carafe to cool completely and fill Carafe with cool water.
9. Pour clear water into Water Reservoir until the Water Indicator is to the 10 cup mark. Repeat steps 6-7 under "Instructions for Use."
10. Once the Coffeemaker has cooled, discard water and paper filter (from inside Removable Liner).
11. Remove and wash Removable Liner in warm, soapy water. Rinse well and dry thoroughly. Replace Removable Liner into Filter Basket and close Basket.
12. Replace Water Filtration System back into Water Filtration Compartment.

For service requiring disassembly other than the above cleaning, contact Consumer Service.

Ordering Replacement Charcoal Filters

We recommend replacing the Charcoal Filter after approximately 60 uses (or 6 weeks). To order replacement Charcoal Filters, please call 1-800-947-3744. Ask the representative for your desired number of Filters and mention the Filters (P/N 30702) are for Model CECF10T.

COOK'S ESSENTIALS® WARRANTY

This Cook's Essentials® product warranty extends to the original consumer purchaser of the product.

Warranty Duration: All materials and workmanship are warranted to the original consumer purchaser for a period of one (1) year from the original purchase date.

Warranty Coverage: This product is warranted against defective materials or workmanship. This warranty is void if the product has been damaged by accident, in shipment, unreasonable use, misuse, neglect, improper service, commercial use, repairs by unauthorized personnel or other causes not arising out of defects in materials or workmanship. This warranty is effective only if the product is purchased and operated in the USA, and does not extend to any units which have been used in violation of written instructions furnished by Cook's Essentials®, or to units which have been altered or modified or to damage to products or parts thereof which have had the serial number removed, altered, defaced or rendered illegible.

Warranty Disclaimers: This warranty is in lieu of all warranties expressed or implied and no representative or person is authorized to assume for Cook's Essentials® any other liability in connection with the sale of our products. There shall be no claims for defects or failure under any theory of tort, contract or commercial law including, but not limited to negligence, gross negligence, strict liability, breach of warranty and breach of contract.

Warranty Performance: During the above one-year warranty period, a product with a defect will be either repaired or replaced with a reconditioned comparable model (at Cook's Essentials® option). Contact Consumer Service for return authorization. The repaired or replacement product will be in warranty for the balance of the one-year warranty period and an additional one-month period. No charge will be made for such repair or replacement.

Service and Repair

If service is required, you should first call toll-free 1-800-233-9054 **between the hours of 8:00 am and 5:00 pm Central Standard Time** and ask for **CONSUMER SERVICE** stating that you are a consumer with a problem. Please refer to Model #CECF10T when you call. To contact Consumer Service by mail, write to:

ATTN: Repair Department
550 Business Center Drive
Mt. Prospect, Illinois 60056

In-Warranty Service: for an appliance covered under the warranty period. Please call for return authorization.

Out-of-Warranty Service: A flat rate charge by model is made for Out-of-Warranty service. Please include \$8.00 (U.S.) for return shipping and handling.

Cook's Essentials® cannot assume responsibility for loss or damage during incoming shipment. For your protection, carefully package the product for shipment and insure it with the carrier. Be sure to enclose the following items with your appliance: any accessories related to your problem; your full name and return address and daytime phone number; a note describing the problem you experienced, **a copy of your sales receipt or other proof of purchase to determine warranty status**. C.O.D. shipments cannot be accepted.

cook's essentials® is a registered trademark of QVC, Inc.

Printed in China