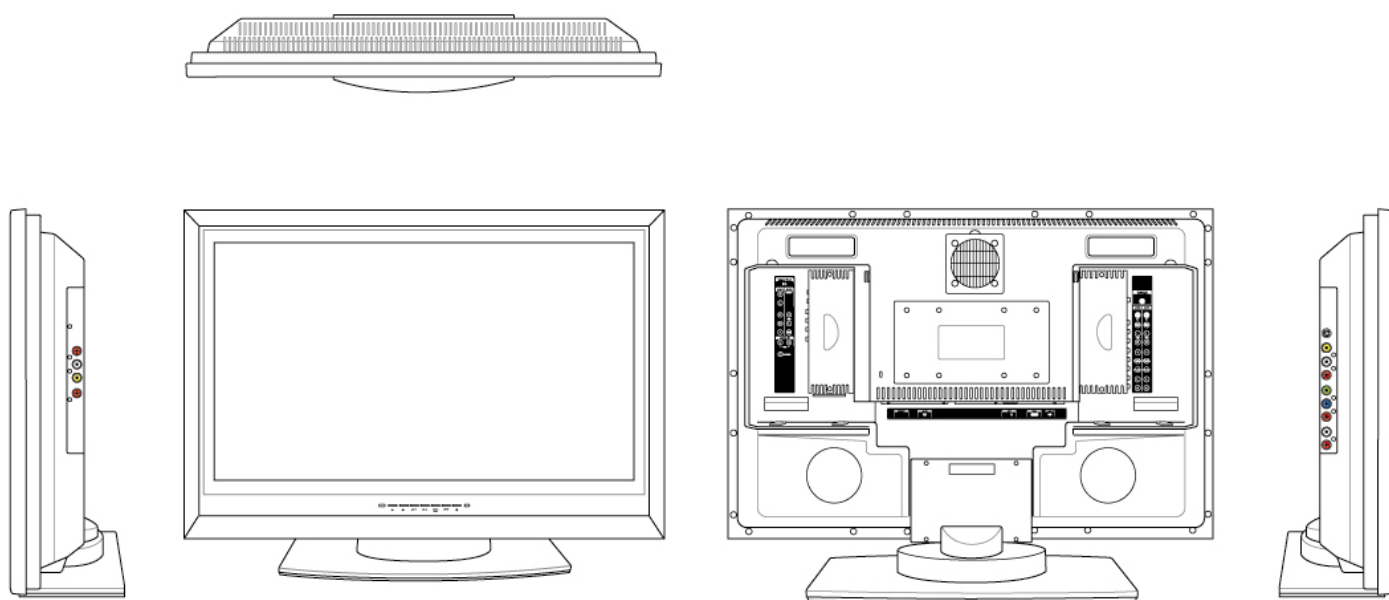


beyond™

where it all comes together



Beyond Widescreen
LCD TV |

User Guide

© 2005 Salton Inc

Beyond and Salton are registered trademarks of Salton Inc.

Specifications subject to change without notice.

032905d13

TABLE OF CONTENTS

IMPORTANT SAFETY INFORMATION	3
Definition of Terms.....	6
General Warnings and Cautions	6
Antenna Grounding According to the National Electrical Code.....	8
Warnings and Safety Precautions.....	9
FCC Compliance Notice	10
Industry Canada	10
Industrie Canada (ICES-003)	10
Industry Canada	10
Industrie Canada BETS-7.....	10
Safety approval.....	10
1. GETTING STARTED WITH YOUR BEYOND LCD TV	11
Welcome!.....	11
What's in the Box	11
Install the Remote Control Batteries.....	12
Turn On the Power	12
2. LCD TV CONTROLS AND CONNECTORS	14
Front Panel Controls	14
Left Side Connectors.....	15
Rear Panel Connectors	15
Rear Panel Connectors for Linking Other Devices.....	16
3. REMOTE CONTROL FUNCTIONS	17
Using the Remote Control	18
4. CONNECTING DEVICES TO YOUR LCD TV	19
Connecting Your DVD Player	19
Connect Using Component Video (Figure 6).....	19
Connect Using S Video (Figure 7)	20
Connecting Your HDTV Set-top Box.....	20
Connect Using Component Video (Figure 6).....	20
Connect Using S Video (Figure 7)	21
Connecting Your VCR or Video Camera	21
Connect Using Component Video(Figure 6).....	21
Connect Using S Video (Figure 7)	21
Connect Using a Coaxial Cable (Figure 8)	21
Connecting Broadcast TV or Cable TV	22
Connecting a Computer	22
To connect using DVI Video.....	23
Connecting a PC using the VGA connector	24
5. USING THE MENUS	25
Navigating On-Screen Displays (OSD) Using the Remote Control.....	25
OSD - With the Source Input Set to TV.....	26

TV Picture Menu.....	26
TV Audio Menu.....	27
TV Options Menu.....	28
TV Setup Menu.....	29
Setup Menu - Parental Control Sub-Menu	30
Setting the Lock.....	30
Setting the MPAA Rating (Motion Picture Association of America Film Ratings).....	30
Setting the TV Guidelines.....	30
Setting the Block Content	31
Parental Control Menu - Changing Your Password	31
OSD - With the Source Input Set to AV1, AV2, AV3	32
AV Connection Menu.....	32
OSD - VGA Menus	33
OSD - DVI Menus	33
6. VIEW MODE FUNCTIONS.....	36
Picture in Picture (PIP)	36
Channel Scan - TV Source.....	35
7. PROGRAMMING THE REMOTE CONTROL	36
8. CLEANNING AND MAINTENANCE	44
LCD TV Display Screen and Cabinet	44
9. TROUBLESHOOTING AND SUPPORT	45
No Picture	45
No Sound	45
Distorted Picture or Unusual Sounds.....	45
Abnormal Colors	45
Abnormal Patterns	45
Wrong Image Size.....	45
Normal Picture, No Sound	45
Pixel Problems.....	45
Screen Noise	46
Dim Screen	46
Remote Control Not Working	46
Beyond LCD TV Support	46
10. TECHNICAL SPECIFICATIONS	47

List of Figures and Tables

Figure 1. Beyond LCD TV Front Panel Controls	14
Figure 2. LCD TV Left Side Panel Connectors	15
Figure 3. LCD TV Rear Panel Connectors	15
Figure 4. Rear Panel Connectors for Linking Other Devices	16
Figure 5. Remote Control Functions	17
Figure 6. LCD TV Rear Panel YPbPr Connectors (Component Video)	19
Figure 7. LCD TV Rear Panel S Video	20
Figure 8. LCD TV Rear Panel UHF/VHF (CATV) Connector.....	22
Figure 9. Connecting a Computer to the LCD TV's DVI Connector.....	23
Figure 10. Connecting a Computer to the LCD TV's VGA Connector.....	24
Table 1. Front Panel Control Functions.....	14
Table 2. LCD TV Rear Panel Connectors	16
Table 3. Remote Control Functions	17

IMPORTANT SAFETY INSTRUCTIONS

When using your Beyond LCD TV, please observe these basic precautions to reduce the risk of personal injury and/or equipment damage.

Before using your Beyond LCD TV:

- Read this owner's manual.
- Observe all warning and cautions in this manual and on the LCD TV.
- Do not use the LCD TV for any purpose other than its intended use.

Definition of Terms



WARNING. Hazards or unsafe practices which could result in serious personal injury or death.




CAUTION. Hazards or unsafe practices which could result in minor injury or product damage.

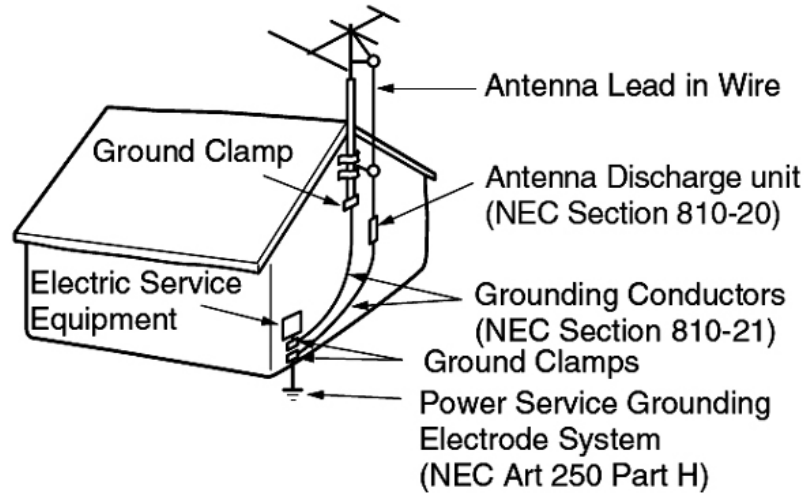
General Warnings and Cautions

1. Read these instructions.
2. Keep these instructions.
3. Heed all warnings.
4. Follow all instructions.
5. Do not use this LCD TV display near water.
6. Clean only with a dry cloth.
7. Do not block any of the ventilation openings. Install in accordance with the manufacturers instructions.
8. Do not install near any heat sources such as radiators, heat registers, stoves, or other apparatus (including amplifiers) that produce heat.
9. Do not defeat the safety purpose of the polarized or grounding-type plug. A polarized plug has two blades with one wider than the other. A grounding type plug has two blades and third grounding prong. The wide blade or third prong are provided for your safety. When the provided plug does not fit into your outlet, consult an electrician for replacement of the obsolete outlet.
10. Protect the power cord from being walked on or pinched particularly at plugs, convenience receptacles, and the point where they exit from the apparatus.
11. Only use attachments/accessories specified by the manufacturer.
12. Use only with a cart, stand, tripod, bracket, or table specified by the manufacturer, or sold with the LCD TV display. When a cart is used, use caution when moving the cart/LCD TV display combination to avoid injury from tip-over.
13. Unplug this LCD TV during lightning storms or when unused for long periods of time.

14. Refer all servicing to qualified service personnel. Servicing is required when the LCD TV display has been damaged in any way, such as power-supply cord or plug is damaged, liquid has been spilled or objects have fallen into apparatus, the apparatus has been exposed to rain or moisture, does not operate normally, or has been dropped.
 15. This product may contain lead or mercury. Disposal of these materials may be regulated due to environmental considerations. For disposal or recycling information, please contact your local authorities or the Electronic Industries Alliance: www.eiae.org.
 16. **Damage Requiring Service** - The LCD TV display should be serviced by qualified service personnel when:
 - The power supply cord or the plug has been damaged
 - Objects have fallen, or liquid has been spilled into the LCD TV display
 - The LCD TV display has been exposed to rain
 - The LCD TV display does not appear to operate normally or exhibits a marked change in performance
 - The LCD TV display has been dropped, or the enclosure damaged.
 17. **Tilt/Stability** - All televisions must comply with recommended international global safety standards for tilt and stability properties.

Do not compromise these design standards by applying excessive pull force to the front, or top, which could ultimately overturn the product.
- 
18. **Wall Mounting** - The LCD TV display should be mounted to a wall only as recommended by the manufacturer.
 19. **Power Lines** - An outdoor antenna should be located away from power lines.
 20. **Outdoor Antenna Grounding** - If an outside antenna is connected to the receiver, be sure the antenna system is grounded so as to provide protection against voltage surges and built up static charges. Section 810 of the National Electric Code, ANSI/NFPA No. 70- 1984, provides information with respect to proper grounding of the mats and supporting structure grounding of the lead-in wire to an antenna-discharge unit, size of grounding connectors, location of antenna discharge unit, connection to grounding electrodes and requirements for the grounding electrode. Please refer to the following diagram:

Antenna Grounding According to the National Electrical Code



National Electrical Code are available from libraries, bookstores or the National Fire Protection Association, Batterymarch Park, Quincy, MA 02269

21. **Objects and Liquid Entry** - Care should be taken so that objects do not fall and liquids are not spilled into the enclosure through openings. LCD TV display shall not be exposed to dripping or splashing and that no objects filled with liquids, such as vases, shall be placed on apparatus.



Warnings and Safety Precautions



WARNING! Risk of fire and electrical shock.

TO PREVENT FIRE OR SHOCK HAZARDS, DO NOT EXPOSE THIS UNIT TO RAIN OR MOISTURE.

REFRAIN FROM OPENING THE CABINET AS THERE ARE HIGH-VOLTAGE COMPONENTS INSIDE. REFER SERVICING TO QUALIFIED SERVICE PERSONNEL.

DO NOT USE THIS UNIT'S POLARIZED PLUG WITH AN EXTENSION CORD RECEPTACLE OR OTHER OUTLETS, UNLESS THE PRONGS CAN BE FULLY INSERTED.



The Beyond LCD TV monitor is designed and manufactured to provide long, trouble-free service. No maintenance other than cleaning is required. Use a soft dry cloth to clean the panel. Never use solvents such as alcohol or thinner to clean the panel surface.

For operating safety and to avoid damage to the unit, please read and observe the following instructions.

To avoid shock and fire hazards:

1. Provide adequate space for ventilation to avoid internal heat build-up. Do not cover rear vents or install the unit in a closed cabinet or shelves. If you install the unit in an enclosure, make sure there is adequate space at the top of the unit to allow hot air to rise and escape.
2. Do not use the power cord polarized plug with extension cords or outlets unless the prongs can be completely inserted.
3. Do not expose the unit to water or moisture.
4. Avoid damage to the power cord, and do not attempt to modify the power cord.
5. Unplug the unit during electrical storms or if the unit will not be used over a long period.
6. Do not open the cabinet which has potentially dangerous high voltage components inside. If the unit is damaged in this way the warranty will be void. Moreover, there is a serious risk of electric shock.
7. Do not attempt to service or repair the unit. Beyond is not liable for any bodily harm or damage caused if unqualified persons attempt service or open the back cover. Refer all service to authorized Beyond Service Centers.



To avoid damage and prolong operating life:

1. Use only with 120V 50/60Hz AC power supply. Continued operation at line voltages greater than 120 Volts AC will shorten the life of the unit, and might even cause a fire hazard.
2. Handle the unit carefully when installing it and do not drop.
3. Set the unit away from heat, excessive dust, and direct sunlight.

4. Protect the inside of the unit from liquids and small metal objects. In case of an accident, unplug the unit and have it serviced by an authorized Beyond Service Center.
5. Do not hit or scratch the panel surface as this causes flaws on the surface of the screen.
6. For correct installation and mounting it is strongly recommended to use a trained, authorized Beyond dealer.
7. Only use tabletop stands or wall-mount brackets that are designed specifically for this product.

FCC Compliance Notice

The United States Federal Communications Commission (in 47 CFR 15.105) has specified that the following notice be brought to the attention of the users of this product:

This equipment has been tested and found to comply with the limits for a Class B digital device, pursuant to part 15 of the FCC Rules. These limits are designed to provide reasonable protection against harmful interference in a residential installation. This equipment generates, uses and can radiate radio frequency energy and, if not installed and used in accordance with the instructions, may cause harmful interference to radio communications. However, there is no guarantee that interference will not occur in a particular installation. If this equipment does cause harmful interference to radio or television reception, which can be determined by turning the equipment off and on, the user is encouraged to try to correct the interference by one or more of the following measures:

1. Reorient or relocate the receiving antenna.
2. Increase the separation between the equipment and receiver.
3. Connect the equipment into an outlet on a circuit different from that to which the receiver is connected.
4. Consult the dealer or an experienced radio/TV technician for help.

Industry Canada Industrie Canada (ICES-003)

This Class B digital apparatus meets all requirements of the Canadian Interference-Causing Equipment Regulations.

Cet appareil numérique de la classe B est conforme à la norme NMB-003 du Canada.

Industry Canada Industrie Canada BETS-7

Cable Compatible Television Apparatus

Télévision câblocompatible, Canada

Safety approval

UL / cUL

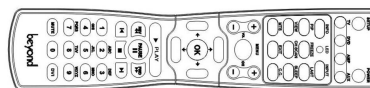
1. GETTING STARTED WITH YOUR BEYOND LCD TV

Welcome! Thank you for purchasing the Beyond Widescreen LCD TV. The Beyond Widescreen LCD TV is an elegant, multi-functional LCD display with a dazzling high-definition display. Beyond's LCD TVs are thinner, lighter, and more energy efficient than your ordinary television set, saving you space and delivering exceptional picture quality that is bright and crisp, with higher definition, higher contrast, and higher luminance than traditional CRT sets. Beyond LCD TVs are versatile. Their high resolution makes them ideal for displaying internet content and data so they can be used as a computer monitor in addition to displaying your favorite television channels. Use your LCD TV to edit and play your home videos and display photos of your latest vacation. Your Beyond LCD TV allows you to do more than just watch TV.

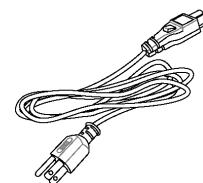
What's in the Box When you receive your Beyond LCD TV, unpack it carefully, and check to make sure you have all the items below.

1. LCD TV unit
2. This Owner's Manual
3. Warranty Card/Customer Support Contact Card
4. Two AAA batteries

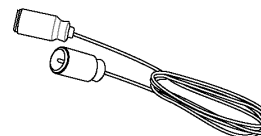
5. Remote control



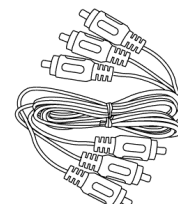
6. Power cord



7. RF Cable (coaxial cable)



8. RCA Cable



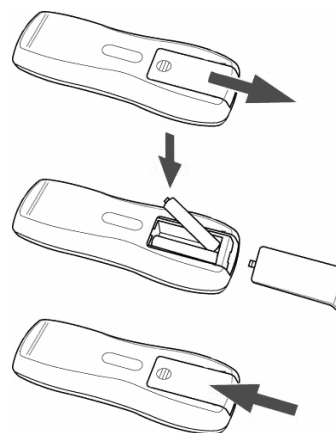
Install the Remote Control Batteries

Before using the LCD TV set for the first time, insert two AAA batteries (supplied) in the remote control.

When the batteries become depleted and the remote control fails to operate, replace the batteries with new batteries.

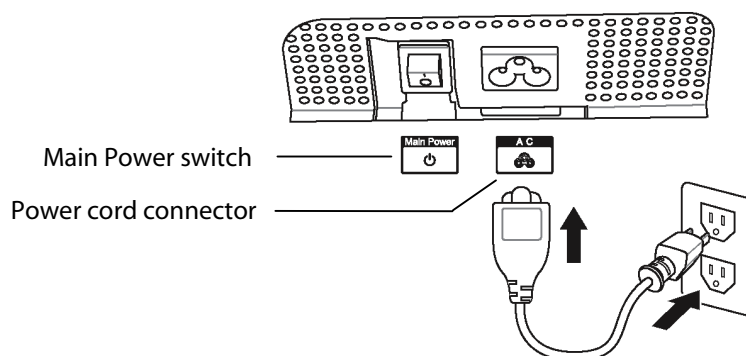
To insert the batteries:

1. Remove the battery cover on the back of the remote control.
2. Insert two AAA batteries into the remote control. Make sure that you match the + and - on the batteries with the + and - symbols inside the battery compartment.
3. Close the battery cover by aligning it with the base of the remote control and sliding it back into place.

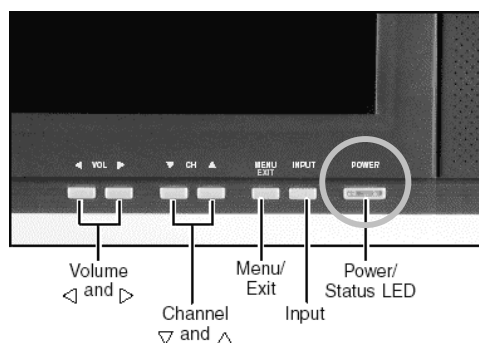
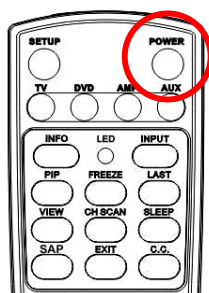


Turn On the Power

1. On the back of your LCD TV: Connect the power cord to the power cord connector and then plug the other end of the power cord into a correctly grounded electrical outlet or surge protector.



2. Press the MAIN POWER switch next to the power cord connector on the LCD TV. The Status LED on the front of the TV turns orange indicating that your LCD TV is ready for use.
3. To turn on the LCD TV press POWER on the front of your LCD TV or on your remote control. The Status LED on the front will turn green and the unit will turn on.



WARNING! If you will be away for an extended period of time, turn off your LCD TV with the MAIN POWER switch (on the TV rear panel) instead of using the POWER button on the remote control or TV front panel.

During electrical storms or when the set is left unattended or unused for long periods of time, turn off the LCD TV using the main power switch, unplug the TV from the wall outlet and disconnect the antenna or cable system.

2. LCD TV CONTROLS AND CONNECTORS

Front Panel Controls Your LCD TV front panel controls are illustrated in Figure 1 below. Control functions are described below in Table 1 .

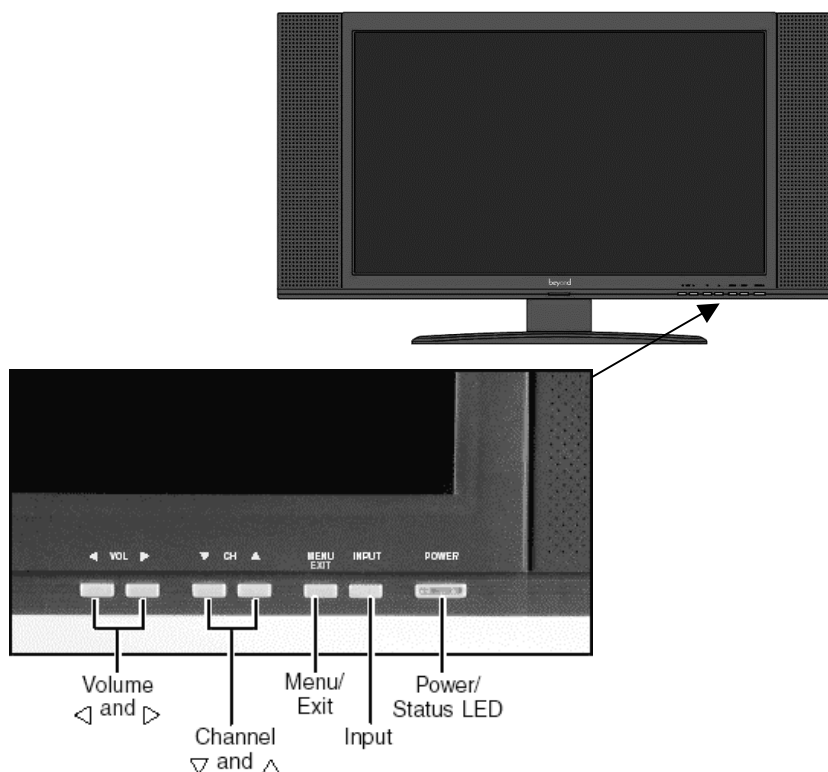


Figure 1. Beyond LCD TV Front Panel Controls

Table 1. Front Panel Control Functions

BUTTON	VIEWING FUNCTION	MENU FUNCTION
◀ VOL	Lowers the sound level	Reduces a menu option value.
VOL ▶	Increases the sound level.	Displays a submenu with selections for the current menu option. Increases a menu option value.
▼ CH	Displays the previous stored channel.	Selects the next menu option.
CH ▲	Displays the next stored channel.	Selects the previous menu option.
MENU/EXIT	Activates the OSD Main Menu.	Returns to the previous menu or to normal viewing.
INPUT	Selects the input source.	N/A
POWER	Turns the LCD TV On/Off.	N/A

Left Side Connectors

There are two connectors (Headphone Jack and Audio/Video Input) on the left side panel of your LCD TV, illustrated in Figure 2 below.

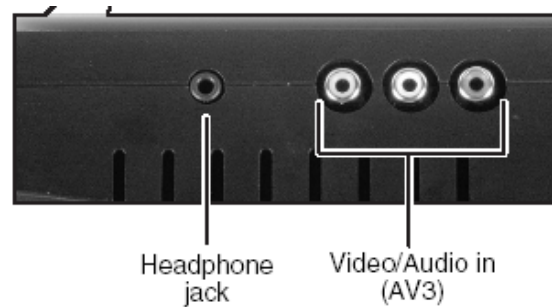


Figure 2. LCD TV Left Side Panel Connectors

Headphone Jack - Connect amplified speakers or headphones to this stereo headphone jack. Using this jack automatically disables the built-in speakers.

Video/Audio-in - Connect composite audio/video devices, such as camcorders or digital cameras to these.

Rear Panel Connectors

Your LCD TV rear panel connectors are illustrated in Figure 3 and described in Table 2 on page 16.

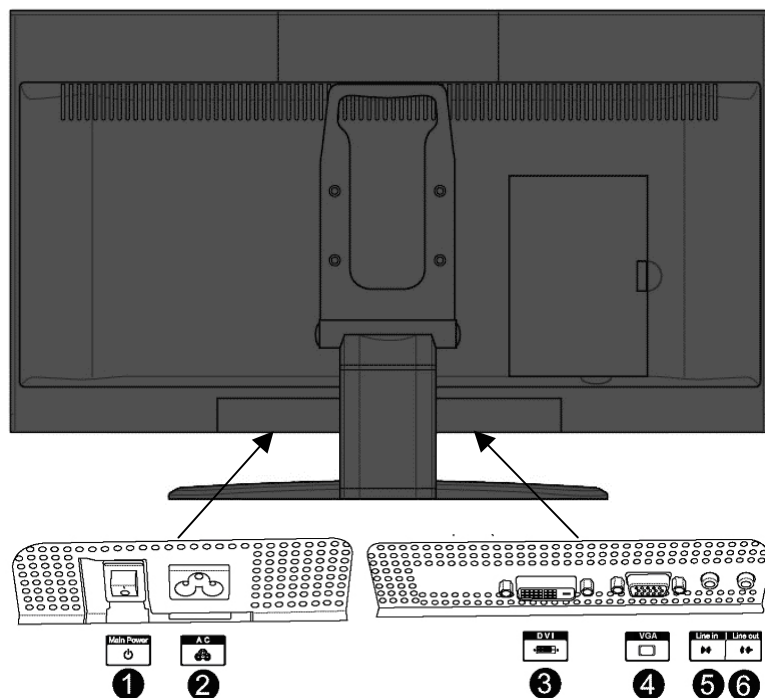


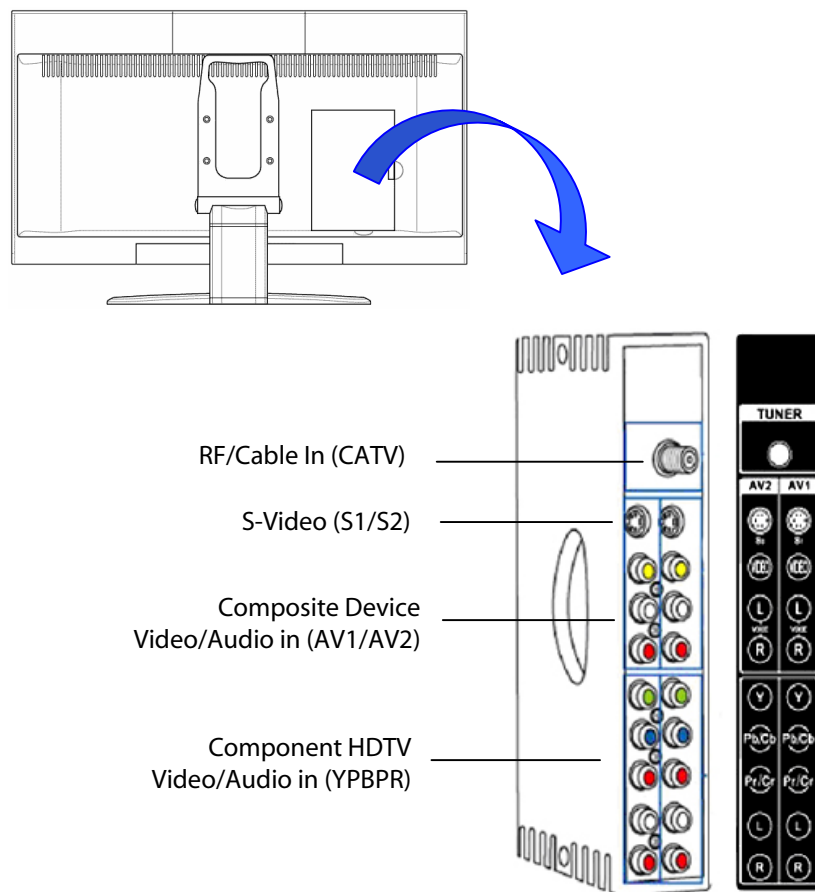
Figure 3. LCD TV Rear Panel Connectors

Table 2. LCD TV Rear Panel Connectors

CONNECTOR	DESCRIPTION
①	Main power switch - Turns the main power ON and OFF.
②	Power cord connector - Connect the power cable here.
③	DVI in - Connects to a DVI video device, such as a computer or cable/Satellite box.
④	VGA - Connects to a VGA video device, such as a computer or cable/Satellite box.
⑤	Audio in - Connects to a computer's audio out jack.
⑥	Audio out - Connects to an external amplifier or speaker.

Rear Panel Connectors for Linking Other Devices

Figure 4 shows the location of rear panel connectors used for linking the LCD TV to other devices. To connect your LCD TV to other devices, please refer to the instructions in Section 4 beginning on page 19.

**Figure 4. Rear Panel Connectors for Linking Other Devices**

3. REMOTE CONTROL FUNCTIONS

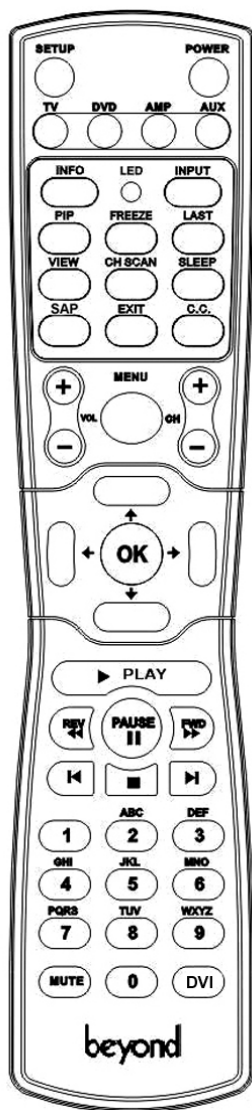


Figure 5. Remote Control Functions

Table 3. Remote Control Functions

BUTTON	FUNCTION
SETUP	Starts all programming sequences.
POWER	Turns the LCD TV on / off.
TV	Press to select TV mode.
DVD	Selects a programmed DVD player.
AMP	Selects a programmed amplifier.
AUX	Selects a programmed component.
INFO	Displays current status of your LCD TV, such as the video input source, audio status, and channel number
LED	Flashes when the remote is being programmed or is sending a signal to your LCD TV.
INPUT	Changes the input source.
PIP	Turns picture-in-picture (PIP) mode on and off. PIP mode does not work when parental controls are set
FREEZE	Freezes the display image
LAST	Recalls the last viewed channel.
VIEW	Select the desired picture form (Panoramic Stretch/16:9, 4:3, Zoom)
CH SCAN	Scans for available TV channels
SLEEP	Toggles the sleep timer on/off
SAP	Selects Secondary Audio Programming (SAP). The SAP channel allows for several different kinds of additional services, such as DVI (descriptive video information), a director's narration, translation into another language, or other possible services. Press repeatedly to select Stereo, MONO, SAP
EXIT	Press to exit from the on-screen display (OSD)
C.C.	Toggles CLOSED CAPTION mode On/Off
+ VOL -	Increases/decreases the volume
MENU	Displays on-screen menus for TV and other options
+ CH -	Changes the channel
← ↑ OK → ↓	Use directional arrows to navigate through on-screen menus. Press OK to enter a menu selection.
▶ PLAY	Plays the CD, DVD or video cassette when the component is activated with the remote control.
◀◀ REV	Rewinds the CD, DVD or video cassette.

BUTTON	FUNCTION
II PAUSE	Temporarily pauses play of a CD or DVD. To resume play, press PAUSE or PLAY.
» FWD	Fast-forwards the CD or DVD.
◀◀	Skips to the beginning of a CD or DVD.
■	Stops play of a CD or DVD.
▶▶	Skips to the end of a CD or DVD.
Number pad	Selects a channel or enters password digits.
MUTE	Toggles the sound on / off.
DVI	Selects the DVI input.

Using the Remote Control

Point the remote control towards the remote control sensor window located on the front of your LCD TV. Make sure no objects are in the line of aim, otherwise the remote control may not operate properly.

4. CONNECTING DEVICES TO YOUR LCD TV

This section provides instructions for connecting the following devices to your LCD TV:

- DVD players
- HDTV decoder set-top boxes
- VCRs
- Broadcast TV and cable TV (CATV)
- Computers



WARNING! Risk of electrical shock.

Before connecting any external components, make sure to unplug your LCD TV.

Connecting Your DVD Player

You may connect a DVD player to your LCD TV using either the component video connectors or the S video connectors located on the rear panel of your LCD TV.

Connect Using Component Video (Figure 6)

1. Connect the green-colored Y jack on the back of your DVD player to the green-colored Y jack on the back of your LCD TV.
2. Connect the red-colored PR or CR jack on the back of your DVD player to the red-colored PRCR jack on the back of your LCD TV.
3. Connect the blue-colored PB or CB jack on the back of your DVD player to the blue-colored PBCB jack on the back of your LCD TV.
4. Connect the red (R) and white (L) audio jacks on the back of your DVD player to the R and L audio-in jacks on the back of your LCD TV.
5. To select the DVD player, turn on your LCD TV, then press INPUT on the remote control until the YPBPR is selected.

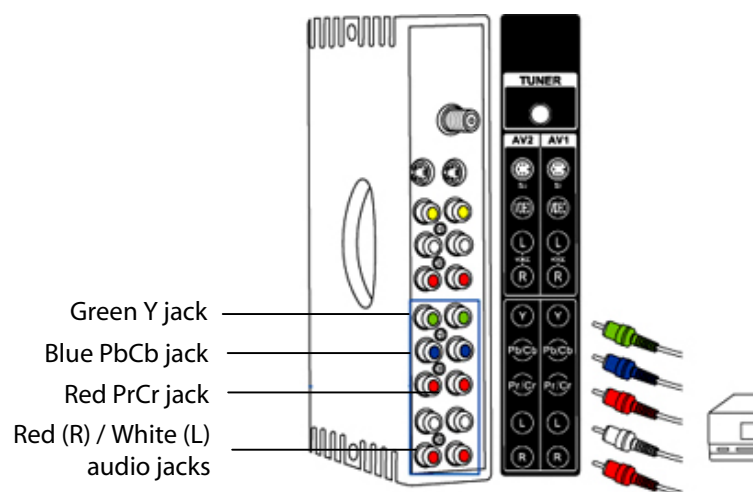
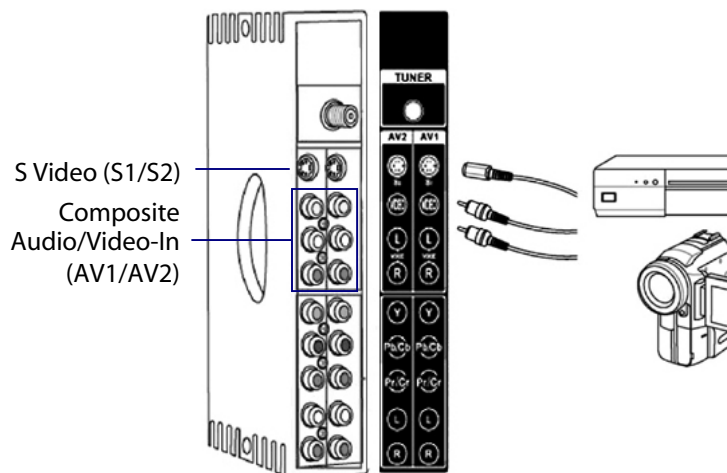


Figure 6. LCD TV Rear Panel YPbPr Connectors (Component Video)

Connect Using S Video (Figure 7)

1. Connect the S-Video jack on the back of your DVD player to one of the S-VIDEO (S1 or S2) jacks on the back of your LCD TV with the correct optional cable).
2. Connect the red (R) and white (L) audio jacks on the back of your DVD player to the appropriately numbered AV1 or AV2 R and L audio-in jacks on the back of your LCD TV.
3. To select the DVD player, turn on your LCD TV, then press INPUT on the remote control until the AV1/S1 or AV2/S2 is selected.

**Figure 7. LCD TV Rear Panel S Video****Connecting Your HDTV Set-top Box**

You may connect an HDTV Set-top box to your LCD TV using either the component video connectors or the DVI connector located on the bottom panel of your LCD TV.

Connect Using Component Video (Figure 6)

1. Connect the green Y jack on the back of your HDTV set-top box to the green Y jack on the back of your LCD TV.
2. Connect the red PR or CR jack on the back of your HDTV set-top box to the red PRCR jack on the back of your LCD TV.
3. Connect the blue PB or CB jack on the back of your HDTV set-top box to the blue PBCB jack on the back of your LCD TV.
4. Connect the red (R) and white (L) audio jacks on the back of your HDTV set-top box to the R and L audio-in jacks on the back of your LCD TV.
5. To select the HDTV set-top box, turn on your LCD TV, then press INPUT on the remote control until YPBPR is selected.

- Connect Using DVI**
1. Connect the DVI jack on the back of your HDTV set-top box to the DVI jack on the bottom of your LCD TV with the correct optional cable.
 2. Connect the red (R) and white (L) audio jacks on the back of your HDTV set-top box to the appropriately numbered AV1 or AV2 R and L audio-in jacks on the back of your LCD TV.
 3. To select the HDTV set-top box, turn on your LCD TV, then press INPUT on the remote control until DVI is selected.

Connecting Your VCR or Video Camera

You may connect your VCR or video camera to you LCD TV using either the component video connectors, S video connectors or the RF/Cable In coaxial connector on the LCD TV rear panel

- Connect Using Component Video(Figure 6)**
1. Connect the green Y jack on the back of your VCR or Video Camera to the green Y jack on the back of your LCD TV.
 2. Connect the red PR or CR jack on the back of your VCR or Video Camera to the red PRCR jack on the back of your LCD TV.
 3. Connect the blue PB or CB jack on the back of your VCR or Video Camera to the blue PBCB jack on the back of your LCD TV.
 4. Connect the red (R) and white (L) audio jacks on the back of your VCR or Video Camera to the R and L audio-in jacks on the back of your LCD TV.
 5. To select the VCR, turn on your LCD TV, then press INPUT on the TV front panel or remote control until the YPBPR is selected.

- Connect Using S Video (Figure 7)**
1. Connect the S-Video jack on the back of your VCR or Video Camera to one of the S-VIDEO (S1 or S2 jacks on the back of your LCD TV with the correct optional cable).
 2. Connect the red (R) and white (L) audio jacks on the back of your VCR or Video Camera to the appropriately numbered AV1 or AV2 R and L audio-in jacks on the back of your LCD TV.
 3. To select the VCR or Video Camera, turn on your LCD TV, then press INPUT until the AV1/S1 or AV2/S2 is selected.

- Connect Using a Coaxial Cable (Figure 8)**
1. Connect the "Output to TV" (RF out or Antenna out) jack on the back of your VCR to the UHF/VHF jack on the back of your LCD TV with the correct optional cable.
 2. If you have an broadcast antenna or cable box, connect your broadcast antenna or cable TV coaxial (RF) cable to the RF/Cable In connector on the back of your VCR.
 3. To select the VCR, turn on your LCD TV, then press INPUT on the TV front panel or remote control until the TV is selected.

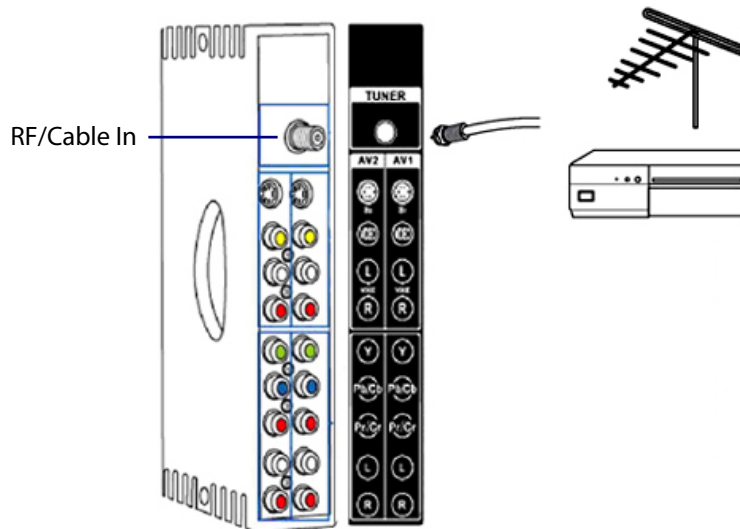


Figure 8. LCD TV Rear Panel RF/Cable In Connector



WARNING! Risk of electrical shock.

If an outdoor antenna or cable system is connected to your LCD TV, make sure that the antenna or cable system is correctly grounded.

Connecting Broadcast TV or Cable TV

You can connect broadcast or cable TV to your LCD TV via the coaxial connector on LCD TV rear panel. Refer to Figure 8 above for the connector location.

1. Connect the coaxial (RF) connector from your antenna or cable box to the RF/Cable In connector on the back of your LCD TV with the correct optional cable.
2. If you have connected a VCR to the RF/Cable In connector on the back of your LCD TV, connect your broadcast TV or cable TV coaxial (RF) cable to the RF/Cable In connector on the back of your VCR.
3. To select the VCR, turn on your LCD TV, then press TV on the remote control.



WARNING! Risk of electrical shock.

If an outdoor antenna or cable system is connected to your LCD TV, make sure that the antenna or cable system is correctly grounded. For more information, refer to the Antenna Grounding diagram on page 8.

Connecting a Computer

You may connect a computer to your LCD TV using either the DVI Video connector or the VGA connector. Please refer to Figure 3 on page 15 for connector locations.

To connect using DVI Video

1. Connect the DVI connector on your computer to the DVI connector on the back of your LCD TV with the correct optional cable.
2. Connect the Audio Out jack on your computer to the Line In jack on the right side panel of your LCD TV.
3. To select the computer, turn on your LCD TV, then press INPUT until the DVI option is selected.

NOTE: The DVI input of this display is compatible with HDCP Copy protection.

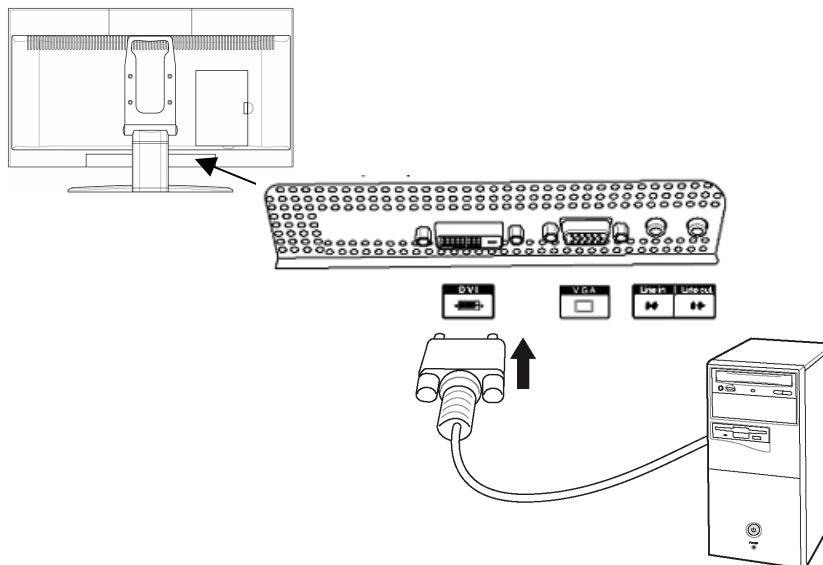
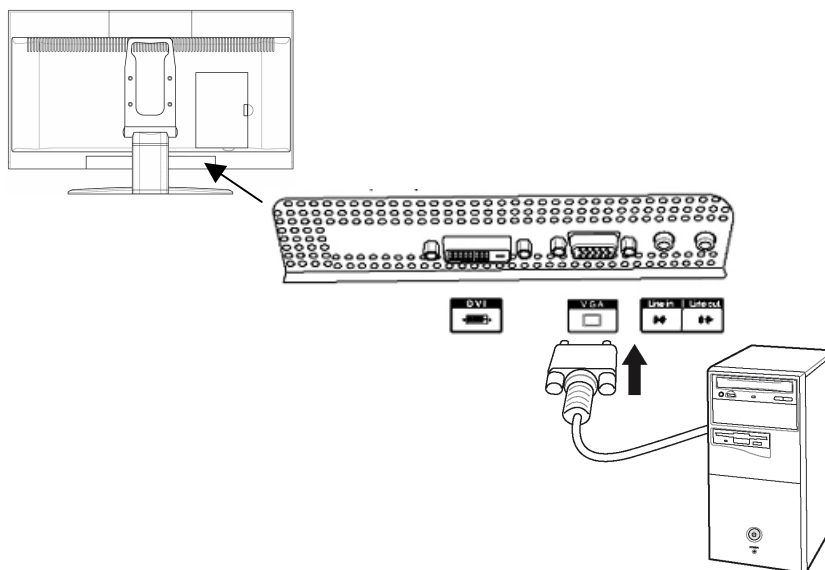


Figure 9. Connecting a Computer to the LCD TV's DVI Connector

Connecting a PC using the VGA connector

1. Connect the 15-pin D-Sub VGA connector on your computer to the VGA connector on the back of your LCD TV with a VGA monitor cable.
2. Connect the Audio Out jack on your computer to the Line in jack on the right side panel of your LCD TV.
3. To select the computer, turn on your LCD TV, then INPUT on the remote control until VGA is selected.

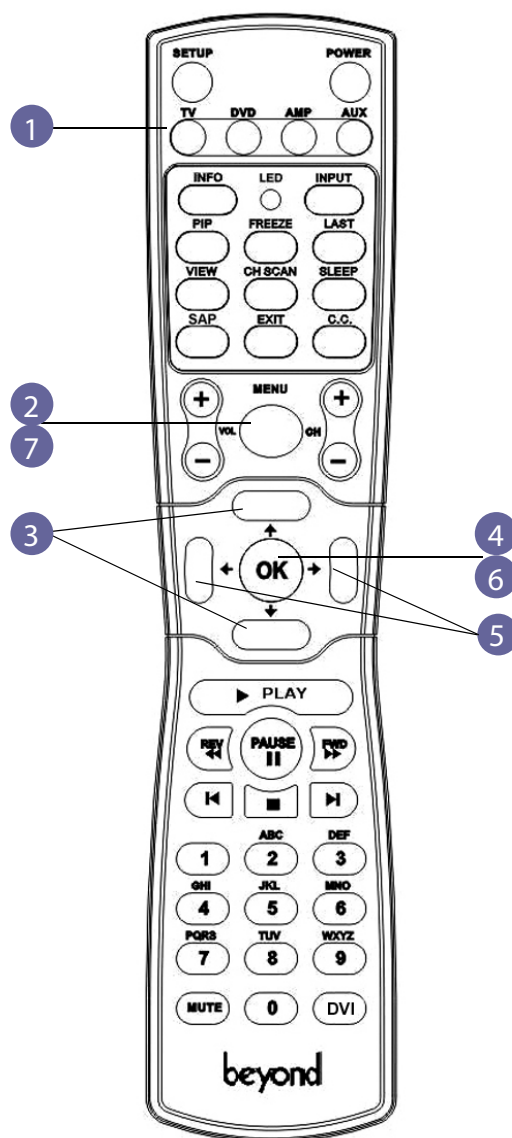
**Figure 10. Connecting a Computer to the LCD TV's VGA Connector**

5. USING THE MENUS

Your LCD TV features an onscreen display (OSD) that allows you to adjust and customize picture, sound, language, parental controls, sleep timer and other settings. All the function settings are accessible through the remote control. OSD menu may be different depending on the current input source.

Navigating On-Screen Displays (OSD) Using the Remote Control

1. With the power ON, press the **TV** button.
2. Press the **MENU** button to show the main menu.
3. Press **↑** or **↓** to highlight the desired menu option.
4. Press **OK** to select the option.
5. Press **←** or **→** to make adjustments.
6. Press **OK** to save your options and return to the previous menu.
7. To exit menu mode, press the **MENU** button repeatedly until all menus close.



OSD - With the Source Input Set to TV

With the source input set to TV, the Main Menu selections are:

- **Picture Menu:** Adjusts: Brightness, Contrast, Color, Tint, Sharpness, Color Temperature, Picture Mode
- **Audio Menu:** Adjusts: Treble, Bass, Balance, Sound Effect, Audio Mode, SAP
- **Setup Menu:** Adjusts: TV System, Auto Search, Manual Search, Sleep Timer, Closed Caption and Parental Controls
- **Options Menu:** Adjusts: Auto Picture, Auto Power On/Off, Language, AV3 In/Out, Factory Preset

TV Picture Menu

To Select the Picture Menu:

1. On your remote control, press **MENU** to display the OSD.
2. Press the **▲/ ▼** keys until Picture Menu is highlighted.
3. Press the **OK** key to enter Picture menu. Press **EXIT** to return to the main menu. Press **EXIT** again to close the OSD.



Use Picture Menu to adjust:

- **Brightness:** <Slider> Adjusts the luminosity of the picture
- **Contrast:** <Slider> Adjusts the contrast ratio
- **Color:** <Slider> Adjusts the color saturation, making colors more or less intense
- **Tint:** Adjusts the balance of colors
- **Sharpness:** Adjusts the sharpness of the picture
- **Color Temperature:** Choose: Cold, Standard, Warm
- **Picture Mode:** Choose Bright, Normal, Soft, User

TV Audio Menu To Select the Audio Menu:

1. On your remote control, press **MENU** to display the OSD.
2. Press the **▲/ ▼** keys until Audio Menu is highlighted.
3. Press **OK** to enter Audio menu. Press **EXIT** to return to the main menu. Press **EXIT** again to close the OSD.



Use Audio Menu to adjust:

- **Treble** <Slider>
- **Bass** <Slider>
- **Balance** <Slider>
- **Sound Effect:** With Surround IC option: Stereo, Surround
- **Audio Mode:** Mono, Stereo, SAP

TV Options Menu To Select the Options Menu:

1. On your remote control, press **MENU** to display the OSD.
2. Press the **▲** or **▼** keys until Options Menu is highlighted.
3. Press **OK** to select Options Menu.
Press **EXIT** to return to the main menu. Press **EXIT** again to close the OSD.

**Setting AV Options:**

Use the Options Menu to adjust settings for:

Auto Picture Use **◀** or **▶** to select: 16:9, 4:3 , Panorama

Auto Power: Use **◀** or **▶** to select: Auto Power On/Off

Sleep: Use **◀** or **▶** to select: Off, 30, 60, 90, 120

Language: Use **◀** or **▶** to select: English, Français, Español, Chinese

Factory Preset: Use **◀** or **▶** to select: Yes/No

TV Setup Menu To Select the Setup Menu:

1. On your remote control, press **MENU** to display the OSD.
2. Press the **▲** or **▼** keys until Setup Menu is highlighted.
3. Press the **OK** key to enter Setup menu. Press **EXIT** to return to the main menu. Press **EXIT** again to close the OSD.



Use the Setup Menu to adjust:

- **TV System:** Cable or Antenna
- **Auto Search:** Select this option to automatically add all channels that have a signal to the channel list.
- **Manual Search:** Select this option to add only certain channels to the channel list. Press **▲** or **▼** to search for channels. Press **◀** or **▶** to add or erase channels
- **Closed Captioning:** Choose: OFF, CC1, CC2, TXT1, TXT2
- **Parental Control:** Press **▶** to enter the Parental Control sub-menu

Setup Menu - Parental Control Sub-Menu

To Select the Parental Control Sub-Menu:

1. On your remote control, press **MENU** to display the OSD.
2. Press the **▲/▼** keys until Setup Menu is highlighted.
3. Press the **▲/▼** keys until Parental Control is highlighted.
3. Press the **►** key to open the Parental Control sub-menu.
4. Use the number pad to enter your password if prompted. If you have not set a password, enter 0000.

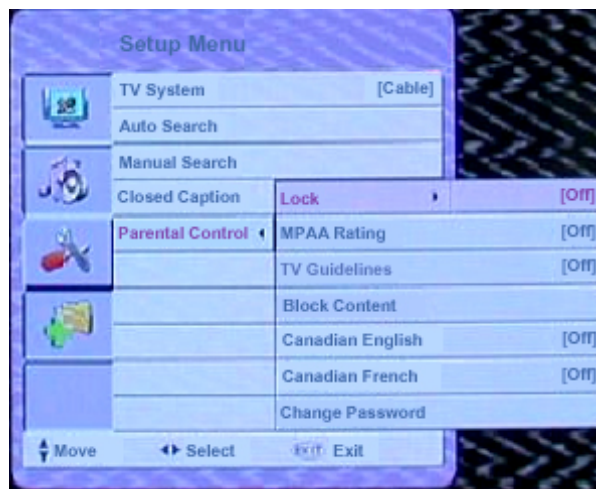
Note: To set or change your password, see the instructions on page 31.

Setting the Lock

1. Press the **▲** or **▼** keys to highlight Lock.
2. Press the **◀** or **▶** to toggle locked/not locked.

Setting the MPAA Rating (Motion Picture Association of America Film Ratings)

1. Press the **▲** or **▼** keys to highlight MPAA Rating's
2. Press the **◀** or **▶** to select the desired rating: OFF/G/PG/PG-13/R/NC-17/X



Setting the TV Guidelines

1. Press the **▲** or **▼** keys to highlight TV Rating.
2. Press the **◀** or **▶** to select the desired rating: OFF/TV-Y/TV-Y7/TV-G/TV-PG/TV-14/TV-MA

- Setting the Block Content**
1. Press the ▲ or ▼ keys to highlight Block Content.
 2. Press the ◀ or ▶ to select the desired rating.

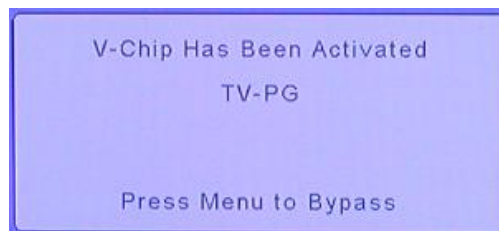
U.S. Block Content Ratings: Block FV violence, Block Violence, Block sex, Block Language, Block Dialog.

Canadian English Block Content Ratings: OFF, E, C, C8+, G, PG, 14+, 18+

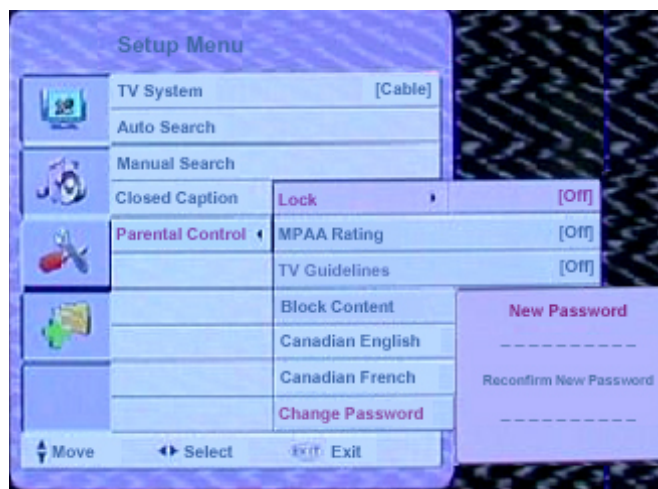
Canadian French Block Content Ratings: OFF, G, E, 8ans+, 13ans+, 16ans+, 18ans+

Note: When a viewer attempts to view a blocked channel, the message the following message is displayed.

To bypass the message, press **MENU** and enter your pass word when prompted



- Parental Control Menu - Changing Your Password:**
1. Press the ▲ or ▼ keys until Change Password is highlighted.
 2. Press the **OK** key to open the Change Password menu.
 3. Using the number pad, enter a 4-digit password. Press **OK**.
 4. Press **EXIT** to return to the Parent Control menu.



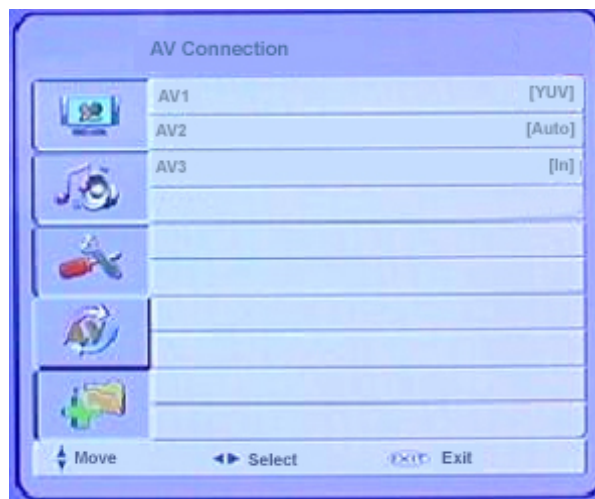
OSD - With the Source Input Set to AV1, AV2, AV3

The Picture, Audio, and Setup Menu for AV1, AV2 and AV3 are the same as TV input. For instructions on setting these options, please refer to pages 26 - 28.

AV Connection Menu

To Open the AV Connection Menu:

1. On your remote control, press **MENU** to display the OSD.
2. Press the **▲** or **▼** keys until AV Connection is highlighted.
3. Press the **OK** key to open the AV Connection menu.
Press **EXIT** to return to the main menu. Press **EXIT** again to close the OSD.



Setting AV Input Sources:

Use the **▲** or **▼** keys to select your desired input source: AV1, AV2, or AV3.

AV1 Use **◀** or **▶** to select: CVBS, S Video, YUV, Auto

AV2 Use **◀** or **▶** to select: CVBS, S Video, YUV, Auto

AV3: Use **◀** or **▶** to select: Input or TV output port

OSD - VGA Menus Use the VGA menus to adjust settings for Picture, Audio, Color and Options. For instructions on setting these preferences, please refer to the OSD-TV instructions on pages 26 - 28.

Use VGA menus to adjust:

- **Picture:** Brightness, Contrast, Auto Adjust (No, Yes), H-Position, V-Position, Clock, Phase and Picture Mode (Bright, Normal, Soft, User)
- **Audio:** Treble, Bass, Balance, Sound Effect (Stereo, Surround), Sound Effect (Stereo, 3D Stereo, Tru Bass, SRS WOW), Audio Mode (Music, Cinema, News, User)
- **Note:** Some Sound Effects are optional
- **Color Menu:** Color Temperature (Cold, Standard, Warm)
- **Options Menu:** Language (English, Français, Español, Chinese), Factory Preset (Yes, No)

OSD - DVI Menus Use the DVI menus to adjust settings for Picture, Audio, Color and Options. For instructions on setting these preferences, please refer to the OSD-TV instructions on pages 28 - 30.

Use DVI menus to adjust:

- **Picture:** Brightness, Contrast and Picture Mode (Bright, Normal, Soft, User)
- **Audio:** Treble, Bass, Balance, Sound Effect (Stereo, Surround), Sound Effect (Stereo, 3D Stereo, Tru Bass, SRS WOW), Audio Mode (Music, Cinema, News, User)
- **Note:** Some Sound Effects are optional
- **Color Menu:** Color Temperature (Cold, Standard, Warm)
- **Options Menu:** Language (English, Français, Español, Chinese), Factory Preset (Yes, No)

6. VIEW MODE FUNCTIONS

Your LCD TV has four different view modes:

- **4:3** Will display a 4:3 input picture at its standard 4:3 size without any stretching. Black stripes will be visible down the left and right sides of the picture.
- **Panorama:** (4:3 stretch): This mode is for 4:3 input picture. The picture is progressively stretched from the center third of the screen outwards to the edges.
- **16:9:** (Full screen): Displays the picture at full screen with linear scaling.
- **Cinema (Letterbox):** This is useful for simulated 16:9 format from DVD player.

Note:

If input picture is 4:3 format in video source, the following view mode selections are available:

- Auto: It can be Panorama (4:3 stretch), 4:3 or 16:9 view mode depending on auto picture setting in OSD menu described in previous section.
- 16 : 9 Cinema
- 4 : 3
- 16 : 9 (full-screen)

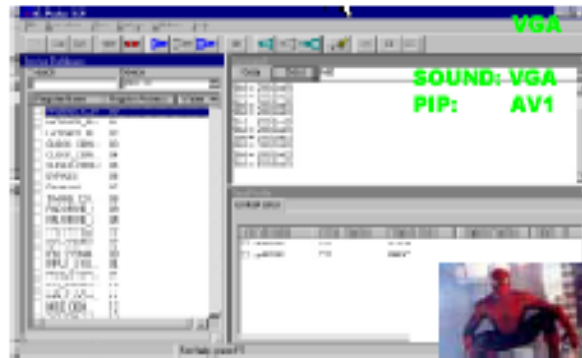
If input source is in PC source, the following view mode selections are available:

- Full screen (16:9)
- Normal: Keeps the same aspect ratio as input picture

Picture-in-Picture (PIP)

PIP Video Source

1. On your remote control, press the **PIP** key to display Picture in Picture mode.
2. Press the **INPUT** key to change sub picture source.



- If current main picture is from PC or component source, default sub-picture is from TV.
- If current main picture is from video source, default sub-picture is from VGA.

Adjusting PIP size

On your remote control, press the **PIP** key to pop up PIP mode. The sub-picture occupies 1/16 of the screen.

Adjusting PIP Location

1. On your remote control, press the **PIP** key to pop up PIP mode. The sub-picture will be located in the lower right corner of the screen.
2. To change PIP location press the arrow keys: ◀▶▶▶. The PIP can be located in the lower left, lower right, upper left, upper right.

PIP Audio Source

1. On your remote control, press the PIP key to display Picture in Picture mode.
2. Press the AUDIO key to toggle the audio source from the main picture to the sub-picture source.

PBP Video Source

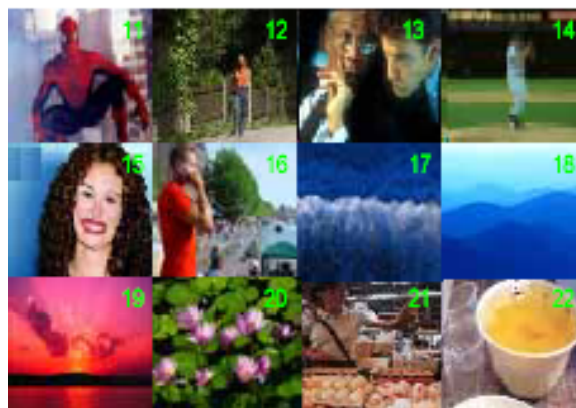
1. On your remote control, press the **PIP** key to display Picture in Picture mode.
2. Press the INPUT key to change sub -picture audio source.
 - If the current main picture is from PC or component source, default sub-picture is from TV.
 - If current main picture is from video source, default sub-picture is from VGA

Channel Scan - TV Source

Channel View in TV Source

Channel Scan allows you to scan through all available TV channels.

To activate Channel Scan, press the **CH. View** key on your remote control to toggle channel scan on/off.



7. PROGRAMMING THE REMOTE CONTROL

The remote control is pre-programmed to work with your LCD TV (program code 900). You can program the remote control to work with as many as seven other devices (VCR, DVD player, satellite, etc).

Programming to Control Other Devices

1. Turn ON the device that you want to program.
2. On the remote control, hold down SETUP and press the corresponding device button until the LED lights and stays on.
3. Enter the three-digit programming code for the device and manufacturer. (A list of device programming codes appears below.) If the code is accepted, the LED turns OFF. If the LED does not turn OFF, repeat steps 2 and 3 with the next code listed for the device and manufacturer.

NOTE: Many devices have more than one code listed. For these, start with the first code, if that doesn't work, try the second and so on until you find the one that works for the device.

Point the remote control at the device and press **POWER**. The programmed device should turn off.

Device Program Codes

The following is a list of device codes to be used when manually programming your remote control. You may have to try several of the codes for each brand before finding a code that works with your device.

VCR

American high	007
Admiral	019
Adventura	059
Aiko	044
Aiwa	009, 046, 059, 067, 068
Akai	013, 021, 022, 030, 069
Amstrad	070
Asha	042
Audiovox	009
Beaumarck	042
Bell & Howell	029
Broksonic	001, 033, 035, 038, 045, 049, 071
Calix	009
Canon	007
Capehart	003
Carver	028
CCE	027, 044
Cineral	044

Citizen	009, 044
Colt	027
Craig	009, 018, 027, 042, 043
Curtis Mathes	007, 013, 034
Daewoo	003, 016, 044, 051
Daytron	003
Denon	014
Dynatech	059
Electrohome	009
Electrophonic	009
Emerex	004
Emerson	001, 008, 009, 015, 021, 022, 026, 033, 035, 037, 038, 040, 044, 045, 049, 051, 059, 071
Fisher	018, 020, 024, 029
Fuji	005, 007
Funa	059, 070
Garrard	059, 070
GE	007, 019, 036, 042

Goldstar	009, 010	Optonica	023
Go Video	047, 050, 072, 073	Orion	001, 035, 045, 049
Gradiente	002, 059	Panasonic	007, 034, 041, 048, 056
Harley Davidson	059	Penney	007, 009, 010, 012, 014, 020, 042
Harman/Kardon	010, 028	Pentax	014, 030
Harwood	026, 027	Philco	007, 038
Headquarter	017	Philips	023, 028, 032
HI-Q	018	Pilot	009
Hitachi	013, 014, 030, 059	Pioneer	025
Jensen	013	Portland	003
JVC	002, 013, 025	Profitronic	042
KEC	009, 044	Proscan	036
Kenwood	010, 013, 017, 025	Protec	027
KLH	027	Pulsar	011
Kodak	007, 009	Quasar	007, 034, 048, 056
Logik	027	Quarter	017
Lloyd's	037, 059	Quartz	017
LXI	009	Radio Shack	053, 059
Magnasonic	044, 052	Randex	009
Magnavox	007, 011, 028, 032, 059	RCA	007, 014, 019, 030, 031, 036, 042
Magin	042	Realistic	007, 009, 017, 018, 019, 023, 024, 029, 059
Marantz	007, 010, 028	Ricon	006
Marta	009	Ridix	009
MEI	007	Runco	011
Matsushita	007, 034, 048	Samsung	016, 042
Memorex	007, 009, 011, 017, 018, 019, 029, 042, 046, 053, 056, 057, 059	Sanky	011, 019
MGA	015, 021, 022, 042	Sansui	013, 025, 043, 049, 059
MGN technology	042	Sanyo	017, 018, 029, 042
Minolta	014, 030	Scott	015, 016, 033, 035, 039, 040
Mitsubishi	015, 019, 021, 022, 025, 074, 075	Sears	007, 009, 014, 017, 018, 020, 024, 029, 030, 059
Motorola	007, 019	Semp	016
MTC	042, 059	Sharp	019, 023
Multitech	027, 059	Shintom	027
NAP	005, 006, 007, 009, 011, 014, 024, 030	Shogun	042
NEC	010, 012, 013, 025, 029	Signature	007
Nikko	009	Singer	027
Nikon	006	Sony	004, 006, 007, 059
Noblex	042	STS	014
Olympus	007	Sylvania	007, 015, 028, 032, 059
Optimus	009, 019, 029, 034, 047, 048, 052, 054, 055, 056, 057	Symphonic	052, 059, 070
		Tatung	013

Teac	013, 059
Technics	007, 011, 034, 036
Technika	007, 009, 059
Thomas	059
TMK	008, 037, 042
Toshiba	015, 016, 024, 039, 040
Totevision	009, 042
Unitech	042
Vector	016
Vector research	010, 012
Vediosonic	042
Video Concepts	012, 016, 021, 022
Wards	007, 014, 016, 018, 019, 023, 027, 028, 040, 042, 059
White Westinghouse	044
XR-1000	007, 027, 059
Yamaha	010, 013
Zenith	005, 006, 011, 049, 059
Some models	060, 061, 062, 063, 064, 065, 066

Satellite

Aifa	190
Aiko	184
Alfa gold	177
Alphastar	078, 124
Best	148
Channel Master	046, 062
Chaparral	049, 060, 062, 063, 098, 114
Citoh	125
Digital satellite TV	179, 180, 181, 182
Drake	046, 050, 102, 065, 106, 108, 115, 118, 121, 169, 170
Drake satellite	139, 140, 141
Dx Antenn	047
DX Communications	116
Echostar	055, 057, 066, 099, 079, 111, 149, 153, 156, 157, 158, 159, 160, 163, 164, 165
Equus	110
Eurostar	166
Expressvu	079
Fortec star	175, 176
Fujitsu	095

General Instrument	068, 091, 092, 093, 117, 126, 127
Hitachi	081, 261
Homecable	064
HTS	079, 112
Hughes Network Sys.	077
Hughes satellite	261
Instrument	072
Intersat	113
IQ	061
IQ Prism	061
Janeil	056, 095
Jerrold	068, 072
JVC	079
Kenwood	096
Legend	066, 099
Macom	046, 089, 093, 126
Macom satellite	138
Magnavox	075, 076
Memorex	066, 076
Micro formula	171
Mina	167
Mitsubishi	168
Orb	104
Orbit	162
Pace	189
Panasonic	056, 074, 088
Pansat	101, 120, 151
Panaset	187
Pbi	171
Philips	059, 075, 076, 174
President	051
Primester	068, 072, 150
Prosat	145
Proscan	071
Quick draw	116
Radio Shack	091, 092, 071
RCA	054, 070, 071, 082, 143, 183
RCA DSS	263, 264, 265
RC-AK	152
Realistic	052
Rural cable	091
Samsung	124, 155

Scientific Atlanta	146, 183
Signal super LT	930 154
Skardin	191, 192, 193
Sony	073
Star Trak	058, 094, 122, 123, 128
STS	047, 061
STS satellite	137
Space TV	173
Sun Moon Star	188
Superguide	097, 105
Tadiran	185
Technosat	163
Tedelex	161
Toshiba	053, 138
Tosonic	080
Uniden	048, 051, 052, 064, 069, 075, 076, 090, 097, 099, 107, 109
United satellite	134, 136
Veccom	171
Video pall	095
Viewstar	119
Vortec	178
Winner	144, 147
Zenith	050, 065, 083, 095, 138
Zenith satellite	133, 139, 140, 141
Some models	142, 172

Cable

ABC	001, 003, 004, 005, 006, 008, 009, 011, 194, 195, 246
Aeon	228
Aifa	240, 251, 253, 255
Aikotec	267, 268
Allegro	026, 034
Antena	266
Antronix	015, 028
APO	221
Archer	015, 026, 028, 044
Asia	247
Asiagiant-777	233
Atlanta	005, 011, 038, 250, 254
Belcor	022
Bell & Howell	009

Best	197
Cable star	022
Cabletenna	015
Cableview	015
Century	026, 241
Citizen	026, 034
Colour voice	017, 019
Comtronics	021
Contec	012
Cs-100	218
Digi	043
Eastern	002, 207, 208, 209, 210, 227, 234
Emerson	044
Everquest	010, 021
Focus	035
Garrard	026
GC Electronics	022, 028
Gemini	010
G.I	006, 032, 037, 129, 130, 131, 257, 258, 259, 260
GMI	198, 219, 229, 231, 232
Golden	248
Goldstar	021, 025
Goodmind	044
Hamlin	013, 020, 031, 086
Hitachi	006
Hytex	004
IEEC	206, 215, 216, 217, 239
IMC	256
Jasco	010, 026, 034
JEBSEE	223
Jerrold	003, 006, 007, 009, 010, 032, 037, 129, 130, 131, 196, 237, 238, 245, 262
KOKA	202, 205
LEON	198, 219
Magnasonic	018
Magnavox	009, 018
Mechanics	035
Memorex	085
Movie Time	023
NAP	004
Novaplex	042

NSC	023
OAK	004, 012
OAK Sigma 500	200
Optimus	014
Panasonic	014, 024, 085
Panther	043, 244
Paragon	085, 243, 249
Philips	017, 018, 019, 026
Pioneer	016, 025, 041
Popular	035
Proscan	014
Pulsar	085
Radio Shack	010, 034, 044, 045
RCA	014
Realistic	028
Recoton	035
Regal	013, 031
Regency	002
Rembrandt	006
Runco	085
Samsung	021, 025
Scientific Atlanta	132, 252
Seam	039
Sg	211
Signal	010, 021
Signature	006
Skygiant	212, 213, 214
SL Marx	021
Sprucer	014
Starcom	003, 010
Stargate	021, 044
Starquest	010
Sylvania	001
TADA	199, 236
Taicom	202, 220
Tandy	030
Tay Shoen	222, 225
Teleview	021
Texscan	001
TFC	033
Timeless	036
Tocom	007, 008
Toshiba	085

Trans	224, 226, 230, 235, 242
Tusa	010
TV86	023
Unika	015, 026, 028
United artists	004
Universal	015, 022, 026, 027, 028
Videoway	029
Viewstar	018, 023, 030
Winer	201
WISO	203, 204
Zenith	005, 010, 028, 040, 085
Zentek	035

DVD

Harman/Kardon	010
JVC	007
Kenwood	005
Magnavox	001
Mitsubishi	002
Onkyo	001
Optimus	003
Philips	001
Pioneer	003, 008
Samsung	009
Sony	004
Toshiba	001
Yamaha	006
Zenith	001, 011

LD

Aiwa	019
Carver	014, 017, 022
Denon	013, 015
Disco vision	012
Funai	019
Harman/Kardon	017
Hitachi	012
Magnavox	017, 021
Marantz	014, 017
Mitsubishi	013
NAD	013
Panasonic	020
Philips	014, 017

Pioneer	012
Quasar	020
Realistic	019
Samsung	022
Sega	012
Sony	016, 018
Technics	020
Theta digital	017
Yamaha	021
Zenith	017

CD

ADC	027
Adcom	044, 061
Aiwa	026, 041, 046
Akai	045
Audio Alchemy	057
Audio-Techica	048
BSR	057, 063
Burmester	073
California Audio Labs	029
Carrera	057
Carver	046, 052, 076
Crown	040
Curtis Mathes	029
DAK	063
DBX	064
Demon	024
Denon	090
DKK	023
Emerson	044, 047, 068, 079
Fisher	037, 052, 069
Garrard	063, 065, 071, 073, 074
GE	025
Genexxa	030, 047, 068
Goldstar	072
Harman/Kardon	046, 049, 075
Hitachi	030, 044
JVC	035
Kenwood	028, 032, 056, 084, 087
Kodak	066
Krell	046
Kyocare	027

Linn	046
Luxman	038
LXI	068
Magnavox	046, 068
Magnavox CD-R	083
Marantz	029, 046, 053
McIntosh	066
MCS	029, 033
Mission	046
MTC	073
Nakamichi	043
NEC	033, 061
Nikko	047, 048
NSM	046
Onkyo	039, 089
Optimus	023, 030, 032, 036, 042, 051, 052, 057, 058, 065, 068, 069, 073, 075, 076, 078
Panasonic	029, 067, 070, 085
Paramount Pict	211
Parasound	057, 073
Philips	046, 066, 083
Pioneer	030, 062, 068, 078
Proscan	034
Proton	046
QED	046
Quasar	029
RCA	025, 034, 044, 052, 068, 086
Realistic	044, 047, 051, 052, 053, 073
Rotel	046, 073
SAE	046
Sansui	046, 059, 068
Sanyo	036, 052
Scott	044, 047, 068
Sears	068
Sharp	032, 053, 088
Sony	023

AMP

Aiwa	110
Bose	113
Carver	102
Curtis Mathes	103

Denon	096
GE	093
JVC	106
Kenwood	107, 108
Linn	102
Luxman	097
Magnavox	102
Marantz	102, 105
Nakamichi	105
NEC	101
Optimus	109
Panasonic	104
Parasound	100
Philips	102
Pioneer	092, 103
Realistic	109
Sansui	091, 105
Shure	101
Sony	099
Soundesign	093, 098
Technics	104, 112
Victor	106
Wards	092, 093, 098
Yamaha	094, 095, 107, 111

TUNER

ADC	163
Adcom	164
Aiwa	128, 132, 139, 156
Akai	123, 143
Archer	203
Capetronic	163
Carver	115, 119, 139, 153
Curtis Mathes	118, 124
Denon	114, 145, 168
Emerson	157
Fisher	119, 142, 153, 169
Garrard	157, 158
Harman/Kardon	127, 139
Inkel	121
JBL	127
JVC	122
Kenwood	117, 119, 123, 138, 147, 148

Kodak	066
Krell	046
Kyocare	027
Linn	139
LXI	137
Magnavox	129, 139, 155, 163
Marantz	118, 129, 139
MCS	118, 151
NAD	149
Nakamichi	125, 152
NEC	144
Onkyo	126, 130, 154
Optimus	119, 124, 136, 137, 138, 142, 163, 166, 167, 169
Panasonic	118, 146, 161
Philips	139, 155
Pioneer	116, 124, 131, 163, 165
Proscan	120
Quasar	118
RCA	120, 151, 153, 162, 163
Realistic	133, 137
Sansui	139, 151
Sanyo	141, 169
Scott	133, 150
Sharp	138
Sherwood	121, 159, 160
Siemens	157
Sony	132, 134
Soundesign	166
Teac	133, 158
Technics	118, 141, 146, 161
Victor	122
Wards	116, 119, 120, 124, 132, 139
Yamaha	135, 138
Zenith	170

CASSETTE DECK

Aiwa	183, 184
Akai	191
Denon	176
Fisher	175
Garrard	193, 195
JVC	188, 189

Kenwood	173, 174
Marantz	171
Mitsubishi	191
Onkyo	179, 180, 190
Optimus	172, 185, 194, 195
Pioneer	172
Sansui	171
Sherwood	194
Sony	181, 187, 192
Teac	193
Technics	186
Victor	189
Wards	172
Yamaha	177, 178

HOME AUTOMATION

GE	197
Lite Touch	196
Radio Shack	197

TAPE

Carver	200
Denon	198
Harman/Kardon	200
Magnavox	200
Marantz	200
Philips	200
Sony	199

TURNTABLE

Aiwa	201
Carver	201
Magnavox	201
Marantz	201
Philips	201
Sony	202

VIDEO

Archer	203
GC Electronics	203
Jebsee	203
Radio Shack	203
Sony Web-TV	205
TeleCaption	204

AUDIO

Aiwa	206, 210, 213
Fisher	207
Harman/Kardon	215
JBL	215
JVC	209
Nikko	212
Panasonic	216
Paramount Pict	211
Philips	215, 217
Polytek	218
RCA	208
Schneider	212
Scientific Atlanta	214
Sony	206, 210
Soundesign	212
SSI	211

8. CLEANING AND MAINTENANCE

LCD TV Display Screen and Cabinet

Please follow the cleaning procedures listed below to prevent damage to your LCD TV.

IMPORTANT: No Abrasives! DO NOT use any kind of abrasive cloth or cleaner or ammonia on the LCD TV Display's screen or cabinet.

Cleaning Your LCD TV Display:

Normally, light dusting with a dry, non-abrasive cloth will clean your LCD TV Display. If cleaning beyond this is needed, please follow these guidelines:

1. Turn off the LCD TV Display and unplug the power cord from the wall outlet before cleaning.
2. Gently wipe down the LCD TV Display with a soft, nonabrasive cloth such as cotton flannel or a clean cloth diaper, lightly moistened with water.
3. Dry with a second dry, soft, non-abrasive cloth.



General cleaning precautions:

- DO NOT scrub or rub the screen or cabinet. Wipe it gently.
- DO NOT apply pressure to the LCD TV Display's screen.
- DO NOT allow liquid to enter the LCD TV Display through the ventilation slots or any crevice.
- DO NOT use any strong or abrasive cleaners because they can scratch the screen and the cabinet.
- DO NOT use any cleaners that contain ammonia, bleach, alcohol, benzene, or thinners because they can damage and dull the surfaces.

9. TROUBLESHOOTING AND SUPPORT

Before contacting customer service, use the following information to solve common problems.

No Picture	Make sure that the power cord is properly plugged into a grounded electrical outlet. Make sure that the MAIN POWER switch and POWER button are turned ON. Make sure that the selected video input source is connected to a working component. If your LCD TV is connected to your computer in VGA mode, press any key on your keyboard to wake up your computer.
No Sound	Try pressing MUTE on the TV or remote control. Make sure that the headphones are not connected. Check SAP settings under the OSD Audio Menu.
Distorted Picture or Unusual Sounds	You may be getting interference from electrical appliances or fluorescent lights. Try moving your LCD TV to another location.
Abnormal Colors	Make sure that the input source cable is connected securely and correctly to your LCD TV.
Abnormal Patterns	Make sure that the input source cable is attached securely and correctly. Make sure that the video input source is within the range of your LCD TV. Compare the video input source's specifications with your LCD TV's specifications.
Wrong Image Size	If you are using DVI-D or VGA mode, make sure that the H-Position and V-Position in the OSD is set correctly.
Normal Picture, No Sound	Make sure that the volume is not turned down. Make sure that the sound is not muted. Make sure that your audio input source cables are connected securely and correctly.
Pixel Problems	Your LCD TV is manufactured using an extremely high level of precision technology. However, sometimes some pixels of your LCD TV may not display correctly. Pixel defects within industry specifications are inherent to this type of product and do not constitute a defective product.

Screen Noise	When your LCD TV's digital capabilities exceed a digital broadcast signal, the signal is up-converted (increased) to match your LCD TV's display capabilities. Up-converting can cause noise or trash. The signal on DVI-D is HDCP encoded. Stop and restart the source.
Dim Screen	Video display devices experience degradation of brightness over the life of the device. Normal brightness degradation is not covered by your warranty.
Remote Control Not Working	Make sure that the batteries are inserted correctly. Make sure the remote control sensor window is not under strong lighting. Replace batteries with a new set.
Beyond LCD TV Support	If this troubleshooting information does not resolve your problem or if you have other questions relating to your LCD TV, please contact Beyond customer service. Customer contact information is provided on the separate card that came with your LCD TV.

10. TECHNICAL SPECIFICATIONS

Technical specifications for the Beyond Widescreen LCD TVs are listed below. Specifications are subject to change without notice.

Beyond 26G	Beyond 23G
Physical Size with Base 19.7 x 32.6 x 8.5 in. Weight 31 lbs. Mounting Holes Standard VESA LCD Panel Active Display Area 26" diagonal Max. Resolution 1280 x 768, WXGA Aspect Ratio 15:9 Contrast Ratio 600:1 Brightness 450 (cd/m2) Response Time 16 ms Display Color 16.7M colors Color System NTSC Viewing Angle 170° (RL/UD) Back Light 14 CCFLs Lamp Life 50,000 hrs Resolution Support 480i, 480p, 720p, 1080i Motion adaptive 3D digital comb filter Dynamic Adaptive Smoothing Filter Dynamic temporal frame-filtering noise reduction Dynamic motion and edge adaptive de-interlacing Monitor System VGA D-sub 15 pin VGA DVI 24 pin DVI-D/HDCP Frequency Range Horizontal 30-70kHz, Vertical 56-85HZ Audio System Amplifier 5W (10% THD max.) Speaker Internal Stereo 5W X 2 Stereo System BTSC/A2 Terminals RF F Type NTSC AV1 RCA for CVBS, Audio R/L, S-Din for S-Video AV2 RCA for CVBS, Audio R/L, S-Din for S-Video AV3 RCA for CVBS, Audio R/L - In or Out YUV RCA for YUV, Audio R/L DVI-D 24 pin DVI-D/HDCP PC Analog D-sub 15 pin VGA PC Stereo Input 3.5mm Line Audio Out 3.5mm Headphone 3.5mm Power Supply Input Universal, 100~ 240 V Power Consumption 90 W, 150 W Max., 5 W Stand-by	Physical Size with Base 16.9 x 29.5 x 8.5 in. Weight 25 lbs. Mounting Holes Standard VESA LCD Panel Active Display Area 23" diagonal Max. Resolution 1280 x 768, WXGA Aspect Ratio 15:9 Contrast Ratio 500:1 Brightness 450 (cd/m2) Response Time 16 ms Display Color 16.7M colors Color System NTSC Viewing Angle 170° (RL/UD) Back Light 12 CCFLs Lamp Life 50,000 hrs Resolution Support 480i, 480p, 720p, 1080i Motion adaptive 3D digital comb filter Dynamic Adaptive Smoothing Filter Dynamic temporal frame-filtering noise reduction Dynamic motion and edge adaptive de-interlacing Monitor System VGA D-sub 15 pin DVI 24 pin DVI-D/HDCP Frequency Range Horizontal 30-70kHz, Vertical 56-85HZ Audio System Amplifier 5W (10% THD max.) Speaker Internal Stereo 5W X 2 Stereo System BTSC/A2 Terminals RF F Type NTSC AV1 RCA for CVBS, Audio R/L, S-Din for S-Video AV2 RCA for CVBS, Audio R/L, S-Din for S-Video AV3 RCA for CVBS, Audio R/L - In or Out YUV RCA for YUV, Audio R/L DVI-D 24 pin DVI-D/HDCP PC Analog D-sub 15 pin VGA PC Stereo Input 3.5mm Line Audio Out 3.5mm Headphone 3.5mm Power Supply Input Universal, 100~ 240 V Power Consumption 70 W, 130 W Max., 5 W Stand-by

© 2005 Salton Inc

Beyond and Salton are registered trademarks of Salton Inc.

Specifications subject to change without notice.

032605d12