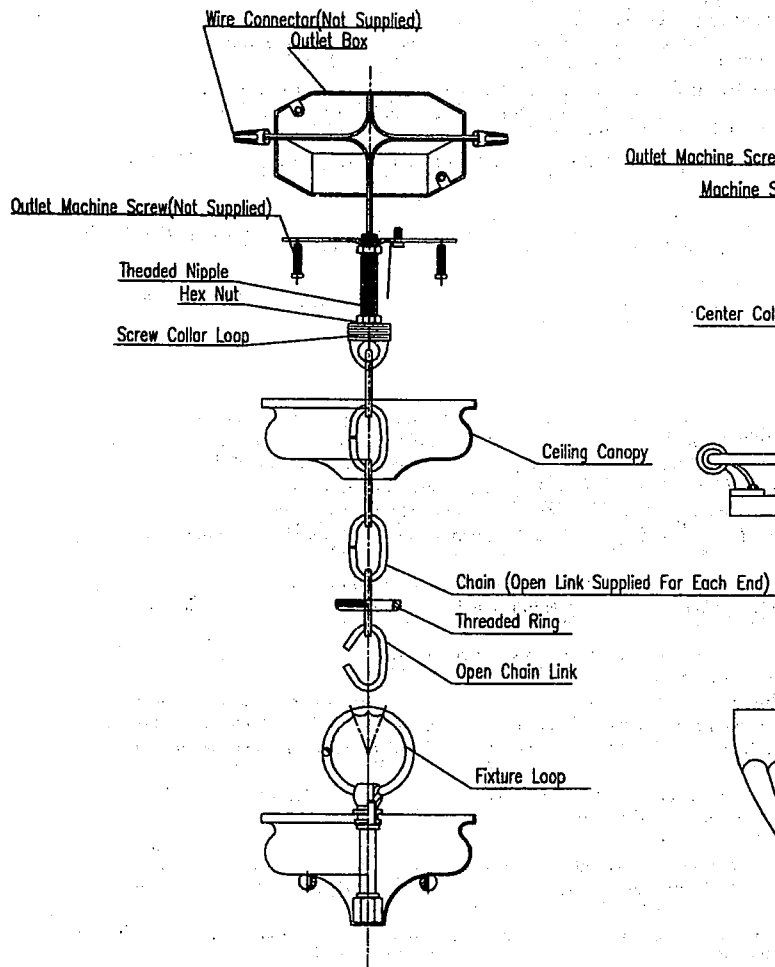
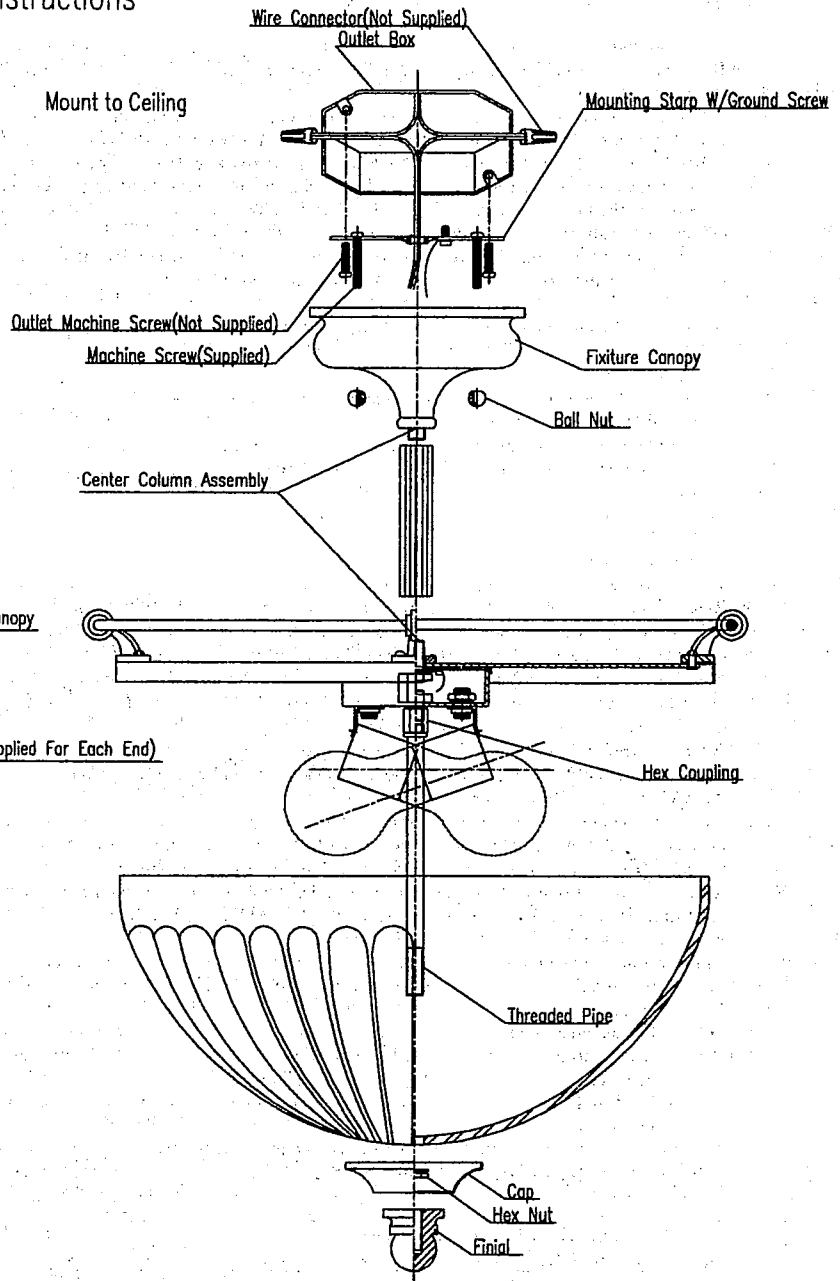


# Model SDW5108VBZ Instructions

## Mount as Pendant



## Mount to Ceiling



## Model SDC5108VBZ Instructions

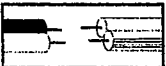
### General assembly and installation instructions:

1. Read and understand all instructions and illustrations completely before proceeding with assembly and installation of this fixture.
2. If you have any doubts about how to install this lighting fixture, or if the fixture fails to operate completely, please contact a qualified licensed electrical contractor.
3. All parts must be used as indicated in these instructions. Do not substitute any parts, leave parts out, or use any parts that are worn out or broken. Failure to obey this instruction could invalidate the UL listing and/or CSA certification of this fixture.
4. **IMPORTANT:** Before you start, **NEVER** attempt any work without shutting off the electricity until the work is done.
  - a) Go to the main fuse, or circuit breaker, box in your home. Place the main power switch in the "OFF" position.
  - b) Unscrew the fuse(s), or switch "OFF" the circuit breaker switch(s), that control the power to the fixture or room that you are working on.
  - c) Place the wall switch in the "OFF" position. If the fixture to be replaced has a switch or pull chain, place those in the "OFF"
5. Remove old fixture from the outlet box, saving the wire connectors and machine screws that connect the mounting strap to the outlet box.
6. Prepare the Center Column Assembly by securing the Center Column tube to the Fixture and then the Fixture Canopy onto the Center Column tube.

If this fixture is to be mounted directly to the Ceiling, follow step 7. If this item will be mounted as a Pendant hanging from the ceiling, proceed to step 8.

7. **Mount to Ceiling:**
  - a) Connect the mounting strap, with the old machine screws, to the outlet box. Orient the mounting strap so that the raised center portion protrudes into the outlet box.
  - b) Complete Grounding Instructions and make wire connections in Steps 17 & 18.
  - c) Raise fixture to ceiling and align Fixture Canopy holes to pass through the protruding machine screws from the mounting strap. Tighten with Ball Nuts.
  - d) Continue from Step 20 to proceed with installing glass, etc.
8. **Mount as Pendant:**
  - Take the threaded nipple from the parts bag and screw it into the screw collar loop a minimum of 1/4" (7mm). Lock in place with a hex nut.
  - Run the other hex nut down the threaded nipple almost touching the first hex nut. Now screw the threaded nipple into the mounting strap. The mounting strap must be positioned with extruded face toward the outlet box and ground screw headed toward the screw collar loop. The threaded pipe must protrude out the back of the mounting strap. Connect the mounting strap to the outlet box with the machine screws from the old fixture.
  - Unscrew the threaded ring from the screw collar loop. Take the ceiling canopy and pass it over the screw collar loop. Approximately 1/2 of the screw collar loop exterior threads should be exposed. Adjust the screw collar loop by turning the assembly clockwise up or counterclockwise down in the mounting strap. Remove the ceiling canopy.
  - After a desired position is found, lock in place by tightening the top (second) hex nut up against the bottom of the mounting strap.
  - Ensure the Fixture Canopy has the threaded tube portion and Fixture Loop securely tightened as illustrated. The ball nuts should be tightened to cover the two holes in the fixture canopy.
  - Slip ceiling canopy over screw collar loop and thread on threaded ring. Attach end of chain to screw collar loop with an open chain link. Use another open chain link to attach the Fixture Loop on top of fixture to the bottom end of chain.
  - Move fixture and bottom open chain link up each link of the chain until a desired fixture height is reached. Remove fixture from the bottom open link.
  - Remove all the unused links that are not hanging between the 2 open chain links. Re-hang fixture from bottom open link. Close both top and bottom open links with pliers, being careful not to scratch the finish. NOTE: Special "Chain Pliers" are available at most electrical and home supply stores and, while not needed, make installation easier.
  - Unscrew the screw collar ring and lower canopy. Weave the electrical and ground wires through every other chain link (no more than 3" or 7.5cm apart). Pass wires through threaded ring, canopy, screw collar loop, threaded pipe and into outlet box.
  - Grounding Instructions:**
    - a) For installation in the United States: Wrap ground wire from outlet box around outlet box around green ground screw on mounting strap, no less than 2" from wire end. Tighten ground screw. If fixture is supplied with a ground wire, connect to outlet ground wire with the old fixture wire connector.
    - b) For installation in Canada: If fixture is supplied with ground wire, wrap ground wire around green grounding screw on mounting strap. Tighten ground screw.
18. Make wire connections, with the old fixture wire connectors, following the reference chart listed below.

| Connect, Hot, Black or Red Outlet Supply Wire to:            | Connect, Neutral, White Outlet Supply Wire to:            |
|--|---|
| Black  | White   |
| *Parallel cord (round & smooth)                              | *Parallel Cord (square & ridged)                          |
| Clear, Brown, Gold or Black without Tracer (colored stripes) | Clear, Brown, Gold or Black with Tracer (colored stripes) |
| Insulated Wire (not green) with copper metal conductor       | Insulated Wire (not green) with Silver metal conductor    |



\*Note: When parallel wire (SPT I & SPT II) is used. The neutral wire is square shaped and ridged and the hot wire will be round in shape and smooth. (See Illustration on left.)

19. Raise canopy to ceiling and secure in place by tightening threaded ring onto screw collar loop.
20. To prepare for glass installation, first attach the Threaded Pipe to the Hex Coupling.
21. Insert bulb(s). Be sure to use light bulb(s) with wattage no greater than specified on this fixture. Always make sure that electrical current is turned off before changing bulbs.
22. Raise Glass Shade so Threaded Pipe protrudes out bottom of glass shade and secure with Hex Nut. Tighten Cap against Glass Shade with Finial.
23. **For cleaning:**
  - a) Always be certain that electric current is turned off before cleaning.
  - b) Use a soft moist cloth with mild non-abrasive soap to clean fixture. Never use glass cleaner on fixture, as it will damage the metal finish.
  - c) All glass shades may be washed in a towel-lined sink with warm water and mild soap. Do not wash shades in an automatic dishwasher.