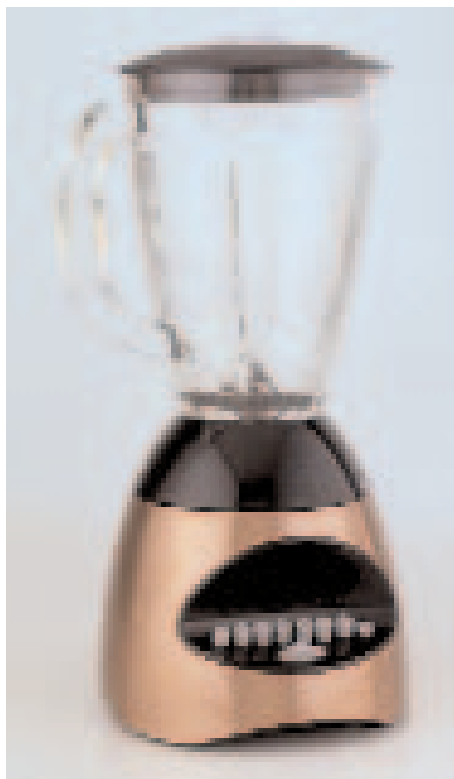




# Russell Hobbs®

*Smart in the kitchen...*



## 12 speed copper blender

model RHCBL3

instructions and warranty

# IMPORTANT SAFEGUARDS

When using electrical appliances, basic safety precautions should always be followed including the following:

1. Read all instructions.
2. To protect against risk of electrical shock do not put cord, plugs, or appliance in water or other liquid.
3. Close supervision is necessary when any appliance is used by or near children.
4. Unplug from outlet when not in use, before putting on or taking off parts, and before cleaning.
5. Avoid contacting moving parts.
6. Do not operate any appliance with a damaged cord or plug or after the appliance malfunctions, or is dropped or damaged in any manner. Contact Consumer Service for examination, repair or electrical or mechanical adjustment.
7. The use of attachments, including canning jars, not recommended by the manufacturer may cause a risk of injury to persons.
8. Do not use outdoors.
9. Do not let cord hang over edge of table or counter.
10. Do not let cord contact hot surface, including the stove.
11. Keep hands and utensils out of the glass blending jar while blending to reduce the risk of severe injury to persons or damage to the blender. A scraper may be used but must be used only when the blender is not running.
12. Blades are sharp. Handle carefully.
13. Always operate blender with blending jar lid in place.
14. When blending hot liquids, remove center piece of 2-piece lid.

## SAVE THESE INSTRUCTIONS

This product is for household use only

## Additional Important Safeguards

1. All users of this appliance must read and understand this Instruction Manual before operating or cleaning this appliance.
2. The cord to this appliance should be plugged into a 120V AC electrical outlet only.
3. Do not leave this appliance unattended during use.
4. If this appliance begins to malfunction during use, immediately press firmly on the OFF button and unplug the cord. Do not use or attempt to repair the malfunctioning appliance.
5. If this appliance falls or accidentally becomes immersed in water, unplug it immediately. **Do not reach into the water!** Do not use this appliance after it has fallen into or becomes immersed in water.
6. To reduce the risk of injury to persons or property, never use this appliance in an unstable position.
7. Do not use this appliance for other than its intended use.
8. Do not use if the glass blending jar is cracked or chipped.

## **polarized plug**

This appliance has a polarized plug (one blade is wider than the other). To reduce the risk of electric shock, this plug is intended to fit into a polarized outlet only one way. If the plug does not fit fully in the outlet, reverse the plug. If it still does not fit, contact a qualified electrician. Do not attempt to modify the plug in any way.

## **short cord instructions**

A short power-supply cord is provided to reduce the risk resulting from becoming entangled in or tripping over a longer cord.

Do not use an extension cord with this product.

## **plasticizer warning**

**CAUTION:** To prevent plasticizers from migrating from the finish of the countertop or tabletop or other furniture, place **NON-PLASTIC** coasters or placemats between the appliance and the finish of the countertop or table top.

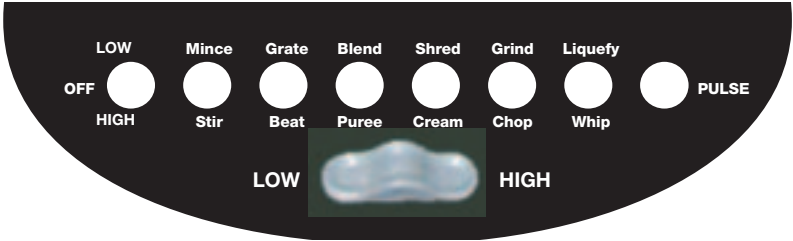
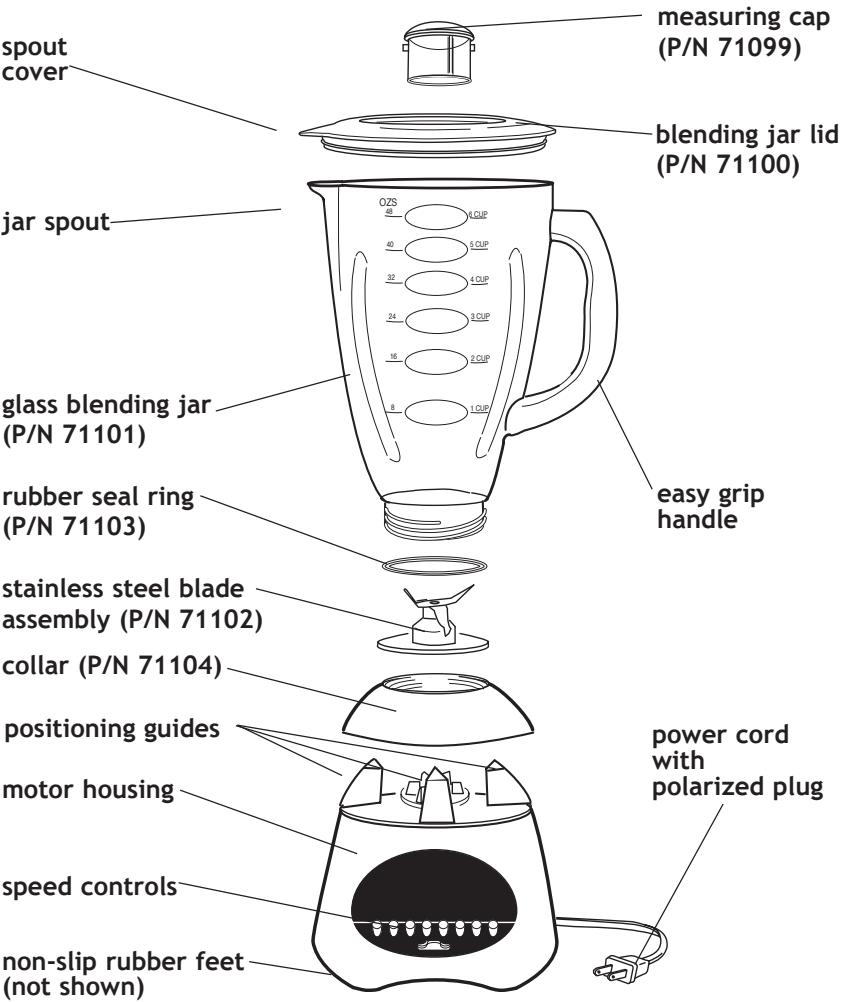
**Failure to do so may cause the finish to darken, permanent blemishes may occur or stains can appear.**

## **electric power**

If the electrical circuit is overloaded with other appliances, your appliance may not operate properly. It should be operated on a separate electrical circuit from other appliances.

**getting to know your Russell Hobbs®  
12 speed copper blender**

product may vary slightly from illustrations



## features

**Speed controls:** A wide variety of foods, from milk shakes to crushed ice, can be processed utilizing the speed controls and pulse action.

**2-piece lid and glass blending jar with stainless steel blade assembly:**

The glass blending jar allows you to safely process hot foods. Remove the measuring cap from the lid to allow steam to escape. Conveniently add additional ingredients through the opening of the 2-piece lid during processing.

**Pulse:** The PULSE setting provides short bursts of power, allowing you to prepare bread crumbs, grind chocolate and finely chop nuts. You can also use the PULSE setting for cleaning the glass jar. See “user maintenance instructions” for details.

**Crushing ice:** Add 1 cup of ice, about 9 cubes, to the glass jar. Press PULSE several times and in seconds the ice will be fluffy and snow-like.

## before using for the first time

**CAUTION:** Use extreme care when handling the blade assembly.

**Do not touch the blades with your fingers. The blades are very sharp and can cause injury if touched.**

1. Carefully unpack the blender, glass blending jar, and all parts.
2. Wash the blending jar lid with measuring cap, glass blending jar, rubber seal ring, collar and stainless steel blade assembly in warm soapy water. Rinse and dry thoroughly.
3. Make sure the cord is unplugged and the OFF button is depressed.

**CAUTION:** To protect against risk of electrical shock, do not place motor housing, plug or cord in water or any other liquid.

4. Wipe the copper motor housing clean with a moistened cloth. Dry thoroughly.

## assembly instructions

**NOTE:** Before assembling, make sure the cord is unplugged and no buttons are depressed; press firmly on the OFF button to ensure the blender is OFF.

**CAUTION:** Use extreme care when handling the blade assembly.

**Do not touch blades with your fingers. The blades are very sharp and can cause injury if touched.**

1. Carefully place the rubber seal ring over the blade assembly.
2. Place the blade assembly in the glass blending jar.
3. Place the collar over the blade assembly. Hold the glass blending jar and turn the collar clockwise to firmly secure it into position on the glass blending jar.

**NOTE:** The collar and blade must be firmly attached to the blending jar before putting any ingredients into the jar.

## operating instructions

**CAUTION:** Keep hands and utensils out of the blending jar while blending to prevent the possibility of severe injury to persons or damage to the unit. A scraper may be used but must only be used when the unit is not running.

**CAUTION:** Use extreme care when handling the blade assembly. Do not touch blades with your fingers. The blades are very sharp and can cause injury if touched.

1. Before starting, make sure power cord is unplugged and the OFF button is depressed.
2. Place blending jar on top of motor housing. Using the positioning guides, rotate the glass blending jar to be in any of possible positions, with the handle facing left or right. The glass blending jar will fit snugly as it is properly seated. Your blender is suitable for both left-handed and right-handed users, and, when not in use, the handle may be rotated for convenient storage.
3. Add ingredients to the glass blending jar, then secure the blending jar lid. Check to make sure that the measuring cap is securely locked into place.

**NOTE:** Do not fill the glass blending jar more than 3/4 full, 4.5 cups (36-oz.). Never operate when the blending jar is empty.

**Remember:** Always hold lid in place during processing.

4. Plug the power cord into a 120V AC electrical outlet.

## speed setting / range setting

range settings	LOW (1-6)	HIGH (7-12)
speed settings	1. Mince 2. Grate 3. Blend 4. Shred 5. Grind 6. Liquefy	7. Stir 8. Beat 9. Puree 10. Cream 11. Chop 12. Whip

1. Select a speed setting by pressing firmly on one of the 6 speed buttons. As you press the buttons from left to right, the faster the blades will blend the ingredients.
2. To switch the speed setting range (LOW: speeds 1-6 or HIGH: speeds 7-12), slide the LOW/HIGH slide switch to the desired range. The blender will switch range modes – even during blender operation. Blend until ingredients have reached desired consistency.
3. After the blending process has begun, any additional ingredients may be added through the center hole in the lid by removing the measuring cap.

## **operating instructions (continued)**

- Do not touch blades.
  - Do not interfere with the blade movement.
  - Do not remove blending jar lid.
4. When blending is completed, press firmly on the OFF button and unplug the blender.

## **hot ingredients**

**CAUTION:** Use extreme caution when blending hot liquids to avoid accidental scalding or burns. Do not use your hand to cover opening!

**NOTE:** When processing hot foods, always remove the measuring cap from the lid before beginning.

- DO NOT put more than 1 cup of hot ingredients into the glass blending jar before beginning to blend.
- After the blending process has begun, you may slowly add up to an additional 1 cup of hot ingredients through the center hole in the lid.
- Always use a vessel with a pouring spout when adding hot ingredients.



## user maintenance instructions

This appliance requires little maintenance. It contains no user serviceable parts. Do not try to repair it yourself. Any servicing that requires disassembly other than cleaning must be performed by a qualified appliance repair technician.

**CAUTION: Never immerse the motor housing, plug or cord in water or any other liquid.**

1. Always unplug the unit before cleaning.
2. Whenever possible, rinse parts immediately after processing to make cleanup easier.

**CAUTION: Use extreme care when handling the blade assembly.**

**Do not touch the blades with your fingers. The blades are very sharp and can cause injury if touched.**

3. Wash the glass blending jar, lid, measuring cap, rubber seal ring and blade assembly in warm soapy water. Rinse and dry thoroughly. Never use rough scouring pads or abrasive cleansers on any plastic or metal parts as the surface may be damaged. Do not wash the lid, measuring cap and blade assembly in the dishwasher.
4. If necessary, wipe exterior surface with a moist cloth or sponge and dry thoroughly.
5. Do not fill the glass blending jar with boiling water or place any of the parts in boiling water.
6. Do not allow the blade assembly to soak in water for long periods of time.
7. For quick clean-ups, the interior of the glass blending jar can be cleaned by using the PULSE setting. Plug the blender into an electrical outlet and simply pour one cup of warm water and a small amount of detergent into the glass blending jar. Depress the PULSE button. Repeat for several short bursts. The unit will clean itself, without you having to handle the sharp blades. Unplug the blender, rinse and dry thoroughly, being careful as the blades are sharp.
8. Properly reassemble all parts before storing.

## to store

**CAUTION: Always assemble clean and dry blender parts correctly before storing on the motor housing. Severe injury can result if blender is accidentally turned ON when not properly assembled.**

Unplug and clean unit. Store in original box or in a clean, dry place.

- Never store blender while it is hot or plugged in.
- Never wrap cord tightly around the appliance.
- Never place any stress on cord, especially where the cord enters the unit, as this could cause the cord to fray and break.

## **recipes**

### **dreamy chocolate mousse**

- 1 teaspoon vanilla
- 1 teaspoon orange flavoring
- 2 tablespoons sugar
- 1 cup mini-chocolate semi-sweet morsels
- 3/4 cup half and half
- 1 3-ounce package cream cheese, softened and cut in cubes

Put vanilla, orange flavoring, and sugar in blender. Heat half-and-half to just below boiling point and stir in chocolate chips until melted. Allow to cool slightly then add to blender. BLEND until smooth. Add cream cheese and BEAT until mixture is blended. Pour into dessert glasses and refrigerate 3 to 4 hours.

Makes 4 servings.

### **mocha frappe**

- 1 1/2 cups cold milk
- 2 teaspoons instant coffee
- 1/4 teaspoon cinnamon
- 1 cup chocolate frozen yogurt

Place all ingredients in blender. Cover and BLEND until smooth. Serve immediately.

Makes 2 to 3 servings.

### **orange frosty**

- 3 cups ice cubes
- 1 6-ounce can frozen orange juice concentrate
- 3/4 cup cold water
- 3/4 cup cold milk
- 1/2 cup sugar
- 1 teaspoon vanilla until smooth

Place all ingredients in blender. PULSE several times until smooth.

Makes 2 to 3 servings.

## **salsa**

1 1/2 cups chopped tomatoes  
1/2 green pepper, chopped  
1/2 small jalapeno pepper, chopped  
1/2 onion, chopped  
2 tablespoons cilantro leaves  
1 tablespoon cider vinegar  
4 ounces tomato sauce  
salt and pepper to taste

Put tomatoes, green pepper, jalapeno pepper, onion, cilantro, vinegar, salt and pepper in blender. PULSE until coarsely chopped. Drain vegetables for thicker salsa, then STIR in tomato sauce. Cover and refrigerate for 2 hours to enhance flavor.

Makes 4 cups.

## **hummus**

2 15-ounce cans garbanzo beans (chickpeas)  
1/2 cup tahini (sesame-seed paste)  
6 tablespoons lemon juice  
3 cloves garlic  
1 teaspoon ground cumin  
Salt and pepper to taste

Drain beans, reserving liquid. Put all ingredients in blender with 1/4 cup of garbanzo beans liquid. BLEND until smooth, adding additional garbanzo bean liquid until desired consistency is reached.

Makes 3 cups.

## **spinach dip**

1 8-ounce can sliced water chestnuts, drained  
1 cup sour cream  
1 cup plain yogurt  
1 bunch green onions, chopped  
2 teaspoons salt  
1 teaspoon tarragon leaves  
1/2 teaspoon dry mustard  
1/2 teaspoon pepper  
2 cloves garlic  
3 ounces spinach leaves, chopped

Put all ingredients in blender. STIR until blended. Cover and refrigerate for 2 hours to enhance flavor.

Makes 4 cups.

## LIMITED ONE YEAR WARRANTY

**Warranty:** This Russell Hobbs® product is warranted by Salton, Inc. to be free from defects in materials or workmanship for a period of (1) year from the original purchase date. This product warranty covers only the original consumer purchaser of the product.

**Warranty Coverage:** This warranty is void if the product has been damaged by accident in shipment, unreasonable use, misuse, neglect, improper service, commercial use, repairs by unauthorized personnel, normal wear and tear, improper assembly, installation or maintenance abuse or other causes not arising out of defects in materials or workmanship. This warranty is effective only if the product is purchased and operated in the USA, and does not extend to any units which have been used in violation of written instructions furnished with the product or to units which have been altered or modified or to damage to products or parts thereof which have had the serial number removed, altered, defaced or rendered illegible.

**Implied Warranties:** ANY IMPLIED WARRANTIES WHICH THE PURCHASER MAY HAVE ARE LIMITED IN DURATION TO ONE (1) YEAR FROM THE DATE OF PURCHASE. Some states do not allow limitations on how long an implied warranty lasts, so the above limitation may not apply to you.

**Warranty Performance:** During the above one-year warranty period, a product with a defect will be either repaired or replaced with a reconditioned comparable model (at our option) when the product is returned to the Repair Center, or the purchase price refunded. The repaired or replacement product will be in warranty for the balance of the one-year warranty period and an additional one-month period. No charge will be made for such repair or replacement.

**Service and Repair:** Should the appliance malfunction, you should first call toll-free 1 (800) 233-9054 between the hours of 9:00 am and 5:00 pm Central Standard Time and ask for CONSUMER SERVICE stating that you are a consumer with a problem. Please refer to model number RHCBL3 when you call.

**In-Warranty Service (USA):** For an appliance covered under the warranty period, no charge is made for service or postage. Call for return authorization (800) 233-9054.

**Out-of-Warranty Service:** A flat rate charge by model is made for out-of-warranty service. Include \$10.00 (U.S.) for return shipping and handling. We will notify you by mail of the amount of the charge for service and require you to pay in advance for the repair or replacement.

**For Products Purchased in the USA, but Used in Canada:** You may return the product insured, packaged with sufficient protection, and postage and insurance prepaid to the USA address listed below. Please note that all customs duty / brokerage fees, if any, must be paid by you and we will require you to pay the cost of customs duty / brokerage fees to us in advance of our performing any service.

**Risk During Shipment:** We cannot assume responsibility for loss or damage during incoming shipment. For your protection, carefully package the product for shipment and insure it with the carrier. Be sure to enclose the following items with your appliance: any accessories related to your problem, your full return address and daytime phone number, a note describing the problem you experienced, a copy of your sales receipt or other proof of purchase to determine warranty status. C.O.D. shipments cannot be accepted.

**To return the appliance, ship to:**

ATTN: Repair Center  
Salton, Inc.  
708 South Missouri Street  
Macon, MO 63552

**To contact us, please write to, call, or email:**

Salton, Inc.  
P.O. Box 7366  
Columbia, MO 65205-7366  
1-800-233-9054  
E-mail: [Salton@Saltonusa.com](mailto:Salton@Saltonusa.com)

**Limitation of Remedies:** No representative or person is authorized to assume for Salton, Inc. any other liability in connection with the sale of our products. There shall be no claims for defects or failure of performance or product failure under any theory of tort, contract or commercial law including, but not limited to negligence, gross negligence, strict liability, breach of warranty and breach of contract. Repair, replacement or refund shall be the sole remedy of the purchaser under this warranty, and **in no event shall Salton be liable for any incidental or consequential damages, losses or expenses.** Some states do not allow the exclusion or limitation of incidental or consequential damages, so the above limitation or exclusion may not apply to you.

**Legal Rights:** This warranty gives you specific legal rights, and you may also have other rights which vary from state to state.

For more information on Salton products: visit our website: [www.eSalton.com](http://www.eSalton.com)

©2004 Salton, Inc. All rights reserved.

Made in China

P/N 61565

7/04