

READ AND SAVE THESE INSTRUCTIONS

WARNING: A risk of fire and electrical shock exists in all electrical appliances and may cause personal injury or death. Please follow all safety instructions.

Three For All® Combination Cappuccino, Coffee and Espresso Maker

USE AND CARE GUIDE FOR
MODEL MEEEX20B



IMPORTANT SAFEGUARDS

When using electrical appliances, basic safety precautions should always be followed to reduce the risk of fire, electric shock, and injury to persons including the following:

- Read all instructions before using appliance.
- Do not touch hot surfaces, use handles or knobs.
- When in use, the appliance is under pressure and should never be left unattended.
- To protect against fire, electric shock and personal injury, do not immerse cord, plug or appliance in water or other liquid.
- Close supervision is necessary when any appliance is used near children.
- This appliance is not for use by children.
- Unplug from outlet when not in use and before cleaning. Allow to cool before putting on or taking off parts and before cleaning the appliance.
- Do not operate any appliance with a damaged cord or plug or after the appliance malfunctions or has been dropped or damaged in any manner. Return appliance to the Salton/MAXIM Service Center for examination, repair or adjustment.
- The use of accessory attachments not recommended by Salton/MAXIM may result in fire, electric shock or personal injury.
- Do not use outdoors or while standing in a damp area.
- Do not let cord hang over edge of table or counter or touch hot surfaces.
- Do not place on or near a hot gas or electric burner, or in a heated oven.
- Prior to connecting or disconnecting plug from wall outlet, turn all controls to **“OFF.”**
- Be certain lids and cap are securely in place before operating appliance.
- Never use the appliance without water.
- Do not use the appliance for other than intended use.
- Scalding may occur if any lids are removed during the brewing cycle.
- Keep steam-jet control knob in closed position when not being used.
- Do not unscrew or remove boiler cap while the appliance is in operation as scalding may occur. Wait until brewing cycle is completed and all water and steam has been used up.

- The carafe is designed for use with this appliance. It must never be used on a range top. Do not set a hot carafe on a wet or cold surface. Do not use a cracked carafe or a carafe having a loose or weakened handle. Do not clean carafe with cleansers, steel wool pads or other abrasive material.
- Do not move entire unit when either carafe contains hot liquid.

SAVE THESE INSTRUCTIONS

FOR HOUSEHOLD USE ONLY

Short Cord Instructions

CAUTION: A short power-supply cord is provided to reduce the risk of personal injury resulting from becoming entangled in or tripping over a longer cord.

Extension cords are available from local hardware stores and may be used if care is exercised in their use.

If an extension cord is required, special care and caution is necessary. Also the cord must be: (1) marked with an electrical rating of 125 V, and at least 13 A., 1625 W., and (2) the cord should be arranged so that it will not drape over the counter top or table top where it can be pulled on by children or tripped over unintentionally.

Polarized Plug

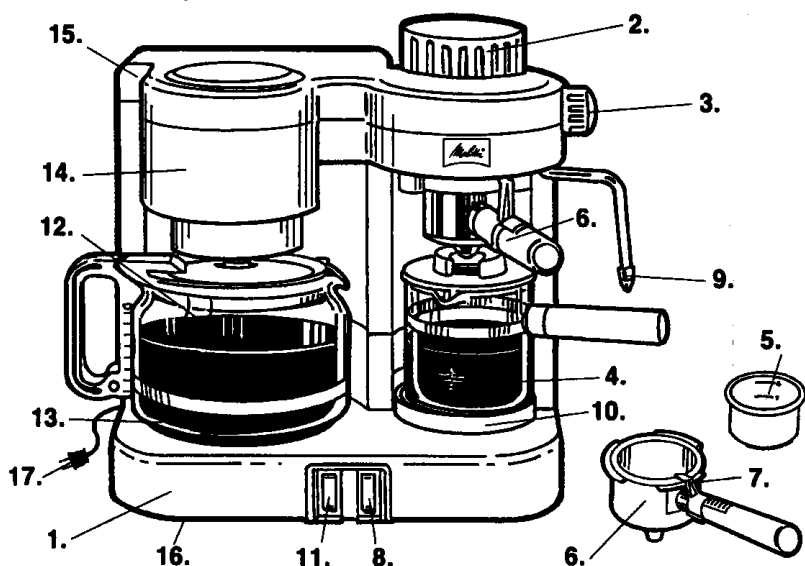
This appliance has a **polarized plug**, one blade is wider than the other. As a safety feature to reduce the risk of electric shock, the plug is intended to fit in a polarized outlet only one way. If the plug does not fit fully in the outlet, reverse the plug. If it still does not fit, contact a qualified electrician. Do not attempt to modify the plug in any way.

WARNING: To reduce the risk of fire or electric shock, **DO NOT REMOVE BOTTOM COVER!** No user serviceable parts inside. Repair should be done by authorized service personnel only.

ELECTRIC POWER: If the electric circuit is overloaded with other appliances, your appliance may not operate properly. It should be operated on a separate electric circuit from other operating appliances.

Getting to Know Your MEEX20B Three For All®

Before using your Melitta MEEX20B for the first time, you should become familiar with all of the parts. Read all instructions and cautions carefully.



- | | |
|---|--|
| 1. Main Body | 9. Steam Nozzle (P/N 30177) |
| 2. Boiler Cap and Boiler (P/N 30142) | 10. Overflow Tray Griddle (P/N 30155) |
| 3. Steam Control Knob | 11. Automatic Drip Coffee Maker On/Off Switch |
| 4. Espresso Carafe with Lid (P/N 30148) | 12. Coffee Carafe with Lid (P/N 30149) |
| 5. Espresso Filter (P/N 03034) | 13. Warming Plate |
| 6. Espresso Filter Holder (P/N 30145) | 14. Swing Away Coffee Filter Basket (P/N 30157A) |
| 7. Filter Holder Lock (P/N 30183) | 15. Coffee Water Reservoir Cover (P/N 30151) |
| 8. Espresso/Cappuccino On/Off Switch | 16. Cord Storage |
| | 17. Cord with Plug |

Identify all parts of your Melitta MEEX20B according to the illustration, so that you have no doubts when reading the following instructions.

Making Espresso

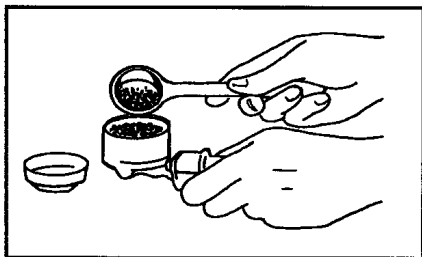
Before making Espresso for the first time, operate the appliance once without coffee (with water only) following the instructions below.

Plug the appliance into a 120VAC outlet. **Make sure that both switches are “OFF.”**

1. Unscrew the boiler cap by turning it counter-clockwise.
2. Fill the Espresso carafe to the desired level. The carafe is marked 2 and 4 for sufficient water to make two or four Espresso cups.

NOTE: If you plan to steam milk for Cappuccino, then add sufficient water for the steaming process. If you plan to make two servings of Cappuccino, fill the carafe up to the steam cloud with water. If you are making four servings, fill to the bottom of the metal band. Pour the water into the boiler.

3. Close the boiler cap securely by screwing it clockwise.
4. Place the filter into the filter holder and fill to the desired level with Espresso coffee.



5. **A fine drip grind coffee must be used** in your Melitta **Three For All®**. A powdery grind is too fine — it will tend to cake in the basket and block the water from flowing through.
6. Special marks on the inside of the filter show the appropriate levels for two and four cups of Espresso. Do not press down on the coffee and do not add coffee above the 4-cup mark.
7. Remove any excess coffee from the edge of the filter.
8. To place the filter and filter holder into the machine, position underneath the filter holder ring, aligning the handle with the left raised notch. Attach to the machine by pushing it upward to the right to lock it into the machine.

Making Espresso (continued)

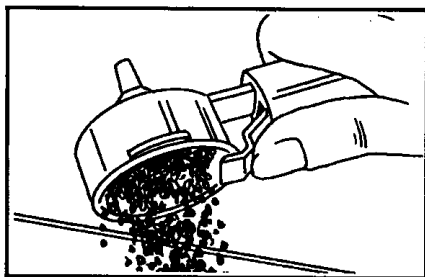
The carafe should be placed directly under the filter holder so that the nozzle is aligned with the hole in the lid of the carafe.

9. Press the "ESPRESSO-CAPPUCCINO" switch on the right. The pilot light will go on. It will take approximately two minutes for the espresso to flow into the carafe.

WARNING: Do not open reservoir cap or the filter holder during the brewing process. Scalding may occur!

NOTE: The machine will process all the water in the boiler until it is empty. Therefore, you must be sure to put only as much water in the boiler as you intend to brew.

10. When coffee has stopped flowing, turn the "ESPRESSO-CAPPUCCINO" switch (on the right) to "OFF." The light will go off.
11. **Open the steam control knob a half turn to relieve the pressure before removing the filter holder or the boiler cap.** Turn the filter holder to the left and remove it.
12. Now empty the filter holder by pressing the filter holder lock forward. Pushing it down, turn it upside down and tap the grounds out.



13. To refill the boiler for additional servings, remove the cap, close the steam jet control knob and refill with water. Then proceed with steps 2 through 12.
14. Unplug the appliance after each use.

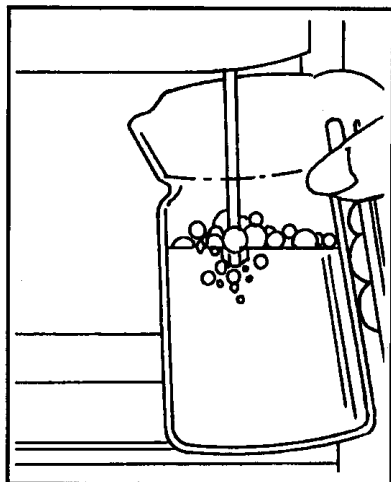
Making Cappuccino

Cappuccino is a mixture of Espresso coffee, milk and frothed milk. Half fill a deep, narrow pitcher with fresh, cold milk and set it next to the steam jet.

1. Follow steps 1 through 9 for making Espresso.
2. As soon as the first drops of coffee are expressed into the carafe, begin to steam the milk.

Place the tip of the steam nozzle into the frothing pitcher, then turn the steam control knob forward.

Move the pitcher up and down, keeping the tip of the nozzle below the surface to avoid splattering.



3. When finished, close the steam valve by turning the steam control knob backwards. After removing the steam jet from the frothed milk, turn steam control knob and **momentarily** open to clean the jet of milk. Espresso making will resume.
4. When coffee has stopped dripping into the carafe, switch the appliance off by pressing the "ESPRESSO-CAPPUCCINO" switch on the right. Follow steps 11 through 14 for making Espresso.
5. Pour an equal amount of steamed milk into the Espresso, then spoon on the foam. Top with cinnamon, nutmeg or chocolate.

Making Automatic Drip Coffee

Before making coffee for the first time, operate the appliance once using water only, following the instructions below.

Plug the appliance into a 120VAC outlet. Make sure that both switches are “OFF.”

1. Fill the coffee carafe with water to the desired level.
2. Open the lid of the water reservoir and pour in the water. Close the lid.
3. Swing out the filter basket. Place a paper filter into the basket and measure the desired amount of ground coffee into it. Swing the filter basket back into the locked position.
4. Place the carafe on the warming plate. Make sure that it is positioned securely in place.
5. Press the “DRIP COFFEE” switch on the left to turn the machine on. The light will show that it is operating.
6. The carafe sits on a warming place, keeping your coffee hot until you turn the “DRIP COFFEE” switch off.

User Maintenance Instructions

1. Unplug the appliance from the electrical outlet and allow to cool **completely** before cleaning.
2. The coffee carafe and lid, the Espresso carafe with lid and the filter holder basket should be washed in warm, soapy water. Rinse in clear water and dry thoroughly.
3. Wipe the outside of your MEEX20B and the swing away filter basket with a damp cloth. **Never immerse the appliance in water or in any other liquid.**
4. This appliance is for household use only.

Descaling

Espresso

If you live in a hard water area, minerals and calcium found in the water will accumulate and affect the operation of your **Three For All®**. Your MEEEX20B should be cleaned approximately every six months (this may vary depending on water conditions). Use distilled vinegar in the following manner to remove the mineral deposits (also referred to as “scale”).

1. Before cleaning your Melitta MEEEX20B, make sure it has been disconnected from the wall outlet and both switches are in the “**OFF**” position.
2. Unscrew the boiler cap by turning it counter clockwise.
3. Fill the carafe with distilled vinegar and pour into the reservoir.
4. Close the boiler cap securely by turning it clockwise.
5. Place the filter and filter holder in the machine following instructions in “Making Espresso” section on page 5. Replace the carafe.
6. Press the “ESPRESSO-CAPPUCCINO” switch on the right.
7. Let all the vinegar run through the machine, then turn the appliance off. **Open the steam jet control knob a half turn to relieve the pressure before removing the filter basket or the boiler cap.**
8. Repeat the above steps using cold water to rinse away any residual vinegar. Repeat twice.

Descaling (continued)

Espresso

1. Fill the coffee carafe half with distilled vinegar and half with cold water.
2. Open the lid of the water reservoir and pour in the vinegar/water solution. Close the lid.
3. Place the carafe on the warming plate. Make sure it is positioned securely in place.
4. Press the “DRIP COFFEE” switch on the left. The light will go on.
5. Let all the vinegar/water solution run through the machine. When the solution has stopped flowing into the carafe, press the “DRIP COFFEE” switch. The light will go off.
6. Repeat the above steps using cold water to rinse away any residual vinegar. Repeat twice.
7. Unplug the appliance when the descaling process is completed.

No other servicing should be attempted by the user.

Any servicing requiring disassembly other than the above cleaning must be performed by a qualified appliance repair technician.

IMPORTANT NOTICE

*If any parts are missing or defective,
DO NOT return this product.*

Please call our Customer Service Department for assistance.

800-233-9054 Monday - Friday 9:00 am - 5:00 pm CST

Thank You

LIMITED ONE YEAR WARRANTY

Warranty: This Melitta® product is warranted by Salton, Inc. to be free from defects in materials or workmanship for a period of (1) year from the original purchase date. This product warranty covers only the original consumer purchaser of the product.

Warranty Coverage: This warranty is void if the product has been damaged by accident in shipment, unreasonable use, misuse, neglect, improper service, commercial use, repairs by unauthorized personnel, normal wear and tear, improper assembly, installation or maintenance abuse or other causes not arising out of defects in materials or workmanship. This warranty is effective only if the product is purchased and operated in the USA, and does not extend to any units which have been used in violation of written instructions furnished with the product or to units which have been altered or modified or to damage to products or parts thereof which have had the serial number removed, altered, defaced or rendered illegible.

Implied Warranties: ANY IMPLIED WARRANTIES WHICH THE PURCHASER MAY HAVE ARE LIMITED IN DURATION TO ONE (1) YEAR FROM THE DATE OF PURCHASE. Some states do not allow limitations on how long an implied warranty lasts, so the above limitation may not apply to you.

Warranty Performance: During the above one-year warranty period, a product with a defect will be either repaired or replaced with a reconditioned comparable model (at our option) when the product is returned to the Repair Center, or the purchase price refunded. The repaired or replacement product will be in warranty for the balance of the one-year warranty period and an additional one-month period. No charge will be made for such repair or replacement.

Service and Repair: Should the appliance malfunction, you should first call toll-free 1 (800) 233-9054 between the hours of 9:00 am and 5:00 pm Central Standard Time and ask for CONSUMER SERVICE stating that you are a consumer with a problem. Please refer to model number MEEX20B when you call.

In-Warranty Service (USA): For an appliance covered under the warranty period, no charge is made for service or postage. Call for return authorization (1 800 233-9054).

Out-of Warranty Service: A flat rate charge by model is made for out-of-warranty service. Include \$10.00 (U.S.) for return shipping and handling. We will notify you by mail of the amount of the charge for service and require you to pay in advance for the repair or replacement.

For Products Purchased in the USA, but Used in Canada: You may return the product insured, packaged with sufficient protection, and postage and insurance prepaid to the USA address listed below. Please note that all customs duty / brokerage fees, if any, must be paid by you and we will require you to pay the cost of customs duty / brokerage fees to us in advance of our performing any service.

Risk During Shipment: We cannot assume responsibility for loss or damage during incoming shipment. For your protection, carefully package the product for shipment and insure it with the carrier. Be sure to enclose the following items with your appliance: any accessories related to your problem, your full return address and daytime phone number, a note describing the problem you experienced, a copy of your sales receipt or other proof of purchase to determine warranty status. C.O.D. shipments cannot be accepted.

To return the appliance, ship to: To contact us, please write to, call, or email:

Attn: Repair Center	Salton, Inc.
Salton, Inc.	P.O. Box 6916
708 South Missouri Street	Columbia, MO 65205-6916
Macon, MO 63552	1(800) 233-9054
Email: Salton@Saltonusa.com	

Limitation of Remedies: No representative or person is authorized to assume for Salton, Inc. any other liability in connection with the sale of our products. There shall be no claims for defects or failure of performance or product failure under any theory of tort, contract or commercial law including, but not limited to negligence, gross negligence, strict liability, breach of warranty and breach of contract. Repair, replacement or refund shall be the sole remedy of the purchaser under this warranty, and in no event shall Salton be liable for any incidental or consequential damages, losses or expenses. Some states do not allow the exclusion or limitation of incidental or consequential damages, so the above limitation or exclusion may not apply to you.

Legal Rights: This warranty gives you specific legal rights, and you may also have other rights which vary from state to state.

For more information on Salton products:
Visit our website: www.salton-maxim.com

© 2001 Salton, Inc.
All Rights Reserved

P/N 60776
Printed in China