

OWNER'S MANUAL
MODEL No. EX-30

Three For All *Plus*

PRECISION CAPPUCCINO ☞ COFFEE ☞ ESPRESSO MAKER



salton[®]

Get a taste of the good life with Salton.

IMPORTANT SAFEGUARDS

When using electrical appliances, basic safety precautions should always be followed:

1. Read all instructions carefully.
2. Do not touch hot surfaces, use handles or knobs.
3. When in use, the appliance is under pressure and should never be left unattended.
4. To protect against fire, electric shock and personal injury, do not immerse cord, plug or appliance in water or other liquid.
5. Close supervision is necessary when any electrical appliance is used by or near children.
6. Unplug from outlet when not in use and before cleaning. Allow to cool before putting on or taking off parts and before cleaning.
7. Do not operate any appliance with a damaged cord or plug or after the appliance malfunctions or has been damaged in any manner. Return appliance to the Salton/MAXIM Service Center for examination, repair or adjustment.
8. The use of accessory attachments not recommended by Salton/MAXIM may result in fire, electric shock or personal injury.
9. Do not use outdoors.
10. Do not let cord hang over edge of table or counter or touch hot surfaces.
11. Do not place on or near a hot gas or electric burner, or in a heated oven.
12. Prior to connecting or disconnecting plug from wall outlet, turn all controls to **"OFF"**.
13. Never use the appliance without water.
14. Do not use the appliance for other than intended use.
15. Scalding may occur if the lid is removed during the brewing cycle.
16. Keep steam-jet control knob in closed position when not being used.
17. Do not unscrew or remove safety lid while the appliance is in operation. Wait until brewing cycle is completed and all water and steam has been used up.
18. The carafe is designed for use with this appliance. It must never be used on a range top. Do not set a hot carafe on a wet or cold surface. Do not use a cracked carafe or a carafe having a loose or weakened handle. Do not clean carafe with cleaners, steel wool pads or other abrasive material.

SAVE THESE INSTRUCTIONS
For Household Use Only.

Short Cord Instructions

A short power-supply cord (or detachable power-supply cord) is provided to reduce the risk resulting from becoming entangled in or tripping over a longer cord.

Longer detachable power-supply cords or extension cords are available and may be used if care is exercised in their use.

If a longer detachable power-supply cord or extension cord is used, (1) the marked electrical rating of the extension cord should be at least as great as the electrical rating of the appliance, and (2) the cord should be arranged so that it will not drape over the counter top or table top where it can be pulled on by children or tripped over unintentionally.

Polarized Plug

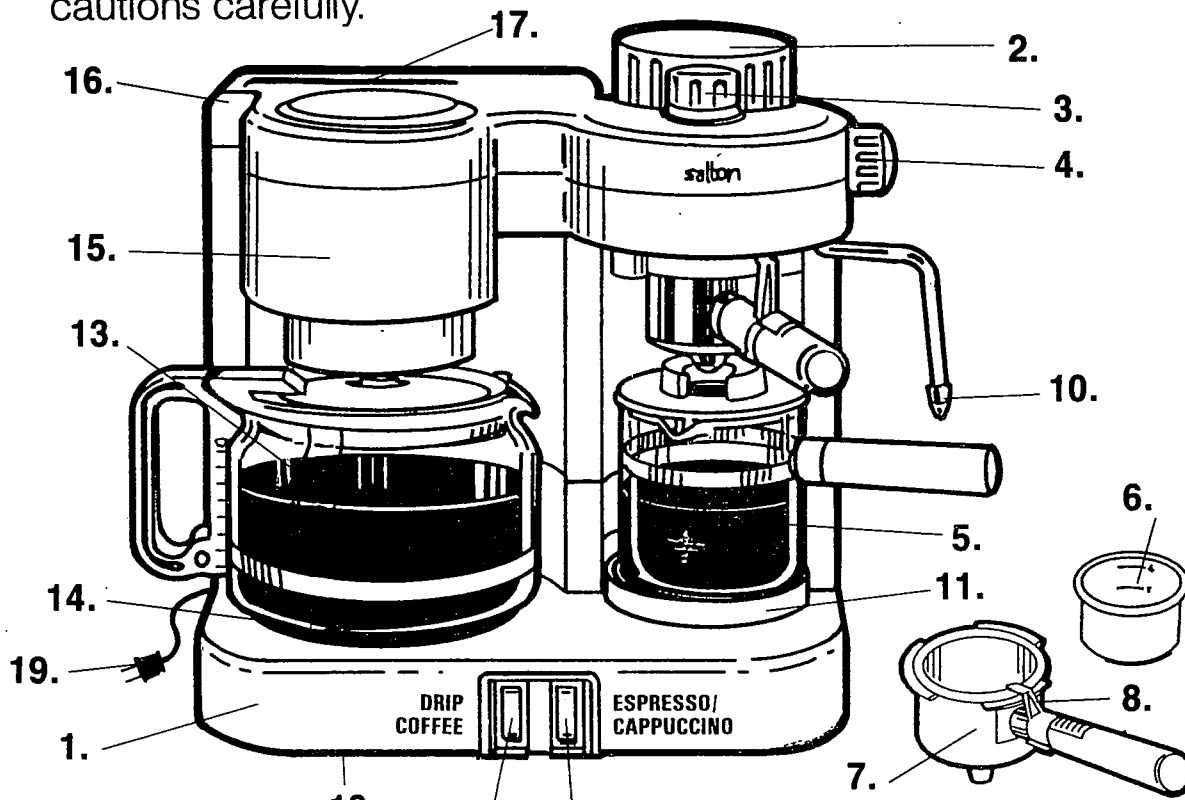
This appliance has a **polarized plug** (one blade is wider than the other), as a safety feature. This plug will fit in a polarized outlet only one way. If the plug does not fit fully in the outlet, reverse the plug. If it still does not fit, contact a qualified electrician. Do not attempt to modify the plug in any way.

WARNING:

*To reduce the risk of fire or electric shock, **DO NOT REMOVE BOTTOM COVER!** No user serviceable parts inside. Repair should be done by authorized service personnel only.*

Getting to Know Your EX-30 Three For All®

Before using your Salton® EX-30 for the first time, you should become familiar with all of the parts. Read all instructions and cautions carefully.



- | | |
|---|---|
| 1. Main Body | 12. Automatic Drip Coffee Maker On/Off Switch |
| 2. Boiler Cap and Boiler | 13. Coffee Carafe with Lid |
| 3. Cappuccino Only/ Brew Strength Valve | 14. Warming Plate |
| 4. Steam Control Knob | 15. Swing Away Coffee Filter Basket |
| 5. Espresso Carafe with Lid | 16. Coffee Water Reservoir |
| 6. Espresso Filter | 17. Coffee Water Level Indicator |
| 7. Espresso Filter Holder | 18. Cord Storage |
| 8. Filter Holder Lock | 19. Cord with Plug |
| 9. Espresso/Cappuccino On/Off Switch | |
| 10. Steam Nozzle | |
| 11. Overflow Tray Griddle | |

Identify all parts of your Salton® EX-30 according to the picture, so that you have no doubts when reading the following instructions.

Making Espresso

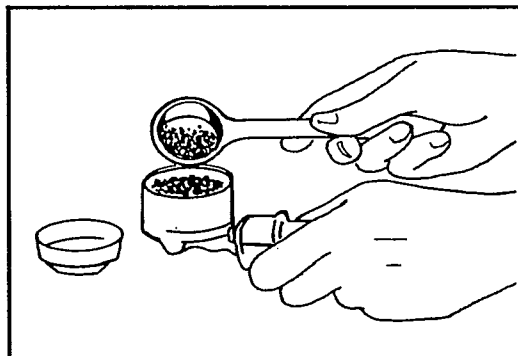
Before making Espresso for the first time, operate the appliance once without coffee (with water only) following the instructions below.

Plug the appliance into a 120VAC outlet. **Make sure that both switches are "OFF"**

1. Unscrew the boiler cap by turning it counter-clockwise.
2. Fill the Espresso carafe to the desired level. The carafe is marked 2 and 4 for sufficient water to make two or four Espresso cups.

NOTE: If you plan to steam milk for Cappuccino, then add sufficient water for the steaming process. If you plan two servings of Cappuccino, fill the carafe up to the steam cloud with water. If you are making four servings, fill to the bottom of the metal band. Pour the water into the boiler.

3. Close the boiler cap securely by screwing it clockwise.
4. Place the filter into the filter holder and fill to the desired level with Espresso coffee. Special marks on the inside of the filter show the appropriate levels for two and four cups of Espresso.



A fine drip grind coffee must be used in your Salton **Three For All® Plus**. A powdery grind is too fine — it will tend to cake in the basket and block the water from flowing through.

5. Remove any excess coffee from the edge of the filter.
6. To place the filter and filter holder into the machine, position underneath the filter holder ring, aligning the handle with the left "bump." Attach to the machine by pushing it upward — and then, by turning to the right to lock it into the machine.

The carafe should be placed directly under the filter holder, so that the nozzle is aligned with the hole in the lid of the carafe.

Making Espresso *(continued)*

7. This appliance is fitted with a ***Cappuccino Only/Brew Strength Valve***. When making Espresso, you can regulate the strength of the Espresso by turning the knob either to light, medium, or strong. (See illustration on page 6.)

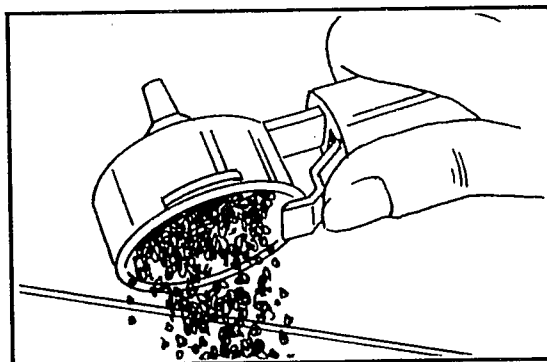
NOTE: The ***Cappuccino Only/Brew Strength Valve*** **MUST** be positioned to the desired strength of the brew and the steam control knob must be in the closed position.

8. Press the On/Off switch on the right. The pilot light will go on. It will take approximately two minutes for the Espresso to flow into the carafe.

WARNING! ***Do not open reservoir cap or the filter holder during the brewing process!***
Scalding may occur.

NOTE: The machine will process all the water in the boiler until it is empty. ***Be sure to put only as much water in the boiler as you intend to brew.***

9. When coffee has stopped flowing, turn the right switch to "OFF" and the light will go off.
10. With the ***Cappuccino Only/Brew Strength Valve*** positioned in "LIGHT" position, **open the steam control knob 1/2 turn to relieve the pressure before removing the filter holder or the boiler cap.** Turn the filter holder to the left and remove it.
11. Now empty the filter holder by pressing the filter holder lock forward. Pushing it down, turn it upside down and knock the grounds out.
12. To refill the boiler for additional servings, remove the cap, close the steam jet control knob. Refill with water, then proceed with steps 2 through 11.
13. Unplug the appliance after each use.



Making Cappuccino

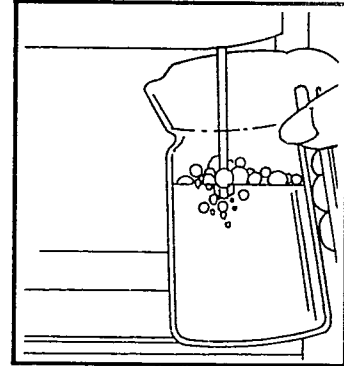
Cappuccino is a mixture of Espresso coffee, milk and frothed milk. Half fill a deep, narrow, pitcher with fresh, cold milk and set it next to the steam jet.

1. Follow steps 1 through 8 for making Espresso.
2. As soon as the first drops of coffee are expressed into the carafe, begin to steam the milk.

Place the tip of the steam nozzle into the frothing pitcher.

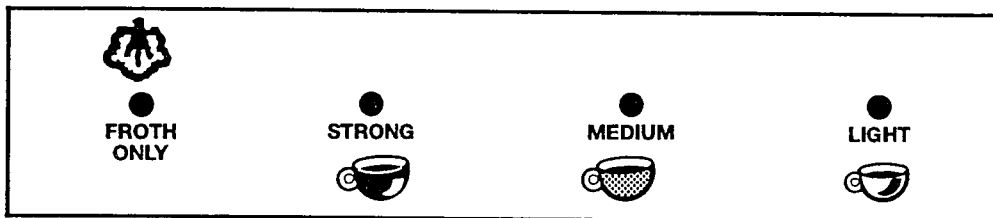
Turn the steam control knob forward to control the amount of steam flow.

Position the ***Cappuccino Only/Brew Strength Valve*** to the “**FROTH ONLY**” position. Espresso making will be interrupted. Steaming will begin.



Move the pitcher up and down keeping the tip of the nozzle below the surface to avoid splattering.

Cappuccino Only/Brew Strength Valve



3. When the milk is frothed, set the ***Cappuccino Only/Brew Strength Valve*** to the desired strength of Espresso and then close the steam control valve by turning it backwards — the Espresso making will resume.

NOTE: After removing the steam jet from the frothing pitcher, momentarily open the steam control valve and position the ***Cappuccino Only/Brew Strength Valve*** to “**FROTH ONLY**” to clean the jet of milk. Resume Espresso making.

4. When the coffee has stopped flowing into the carafe, switch the appliance “**OFF**” by pressing the switch on the right and proceed with steps 10 through 13 in the “Making Espresso” section of this manual.
5. Transfer the frothed milk to the Espresso with a spoon.

Making Automatic Drip Coffee

Plug the appliance into a 120VAC outlet. Make sure that both switches are **“OFF”**.

1. Fill the coffee carafe with water to the desired level.
2. Open the lid of the water reservoir and pour in the water. Close the lid.
3. Swing out the filter basket. Place a paper filter (or a Salton® Goldtone Filter) into the basket and measure the desired amount of ground coffee into it. Swing the filter basket back into the locked position.
4. Place the carafe on the warming plate. Make sure that it is positioned securely in place.
5. Press the “DRIP COFFEE” switch on the left to turn the machine on. The light will show that it is operating.
6. The carafe sits on a warming plate, keeping your coffee hot until you turn the “DRIP COFFEE” switch off.

User Maintenance Instructions

1. Unplug the appliance from the electrical outlet and allow to cool **completely** before cleaning.
2. The coffee carafe and lid, the Espresso carafe with lid, the filter holder filter holder basket should be washed in warm, soapy water. Rinse in clear water and dry thoroughly.
3. Wipe the outside of your EX-30 and the swing away filter basket with a damp cloth. **Never immerse the appliance in water or in any other liquid.**
4. This appliance is for household use only!

Descaling Espresso

If you live in a hard water area, minerals and calcium found in the water will accumulate and affect the operation of your **Three For All® Plus.** Your EX-30 should be cleaned approximately every six months (this may vary depending on water conditions). Use distilled vinegar in the following manner to remove the mineral deposits, also referred to as "scale."

1. Before cleaning your Salton® EX-30, make sure it has been disconnected from the wall outlet and both switches are in the "**OFF**" position.
2. Unscrew the boiler cap by turning it counter clockwise.
3. Fill the carafe with distilled vinegar and pour into the reservoir.
4. Close the boiler cap securely by screwing it clockwise.
5. Place the filter and filter holder into the machine following instructions in "Making Espresso" section on page 4. Replace the carafe.
6. Press the On/Off switch on the right.
7. Let the whole tank of vinegar run through the machine — then turn the appliance off.
8. **Relieve the pressure following step 10 in the "Making Espresso" section of this manual.**
9. Repeat the above steps using cold water to rinse away any residual vinegar. Repeat twice.

Descaling *(continued)*

Coffee

- 1.** Fill the coffee carafe half with distilled vinegar and half with cold water.
- 2.** Open the lid of the water reservoir and pour in the vinegar/water solution. Close the lid.
- 3.** Place the carafe on the warming plate. Make sure it is positioned securely in place.
- 4.** Press the “DRIP COFFEE” switch on the left. The light will go on.
- 5.** Let the whole tank of vinegar/water solution run through the machine. When the solution has stopped flowing into the carafe, press the “DRIP COFFEE” switch. The light will go off.
- 6.** Repeat the above steps using cold water to rinse away any residual vinegar. Repeat twice.
- 7.** Unplug the appliance when the descaling process is completed.

No other servicing should be attempted by the user.

ONE-YEAR LIMITED WARRANTY

This Salton, Inc. product warranty extends to the original consumer purchaser of the product.

Warranty Duration: This product is warranted to the original consumer purchaser for a period of one (1) year from the original purchase date.

Warranty Coverage: This product is warranted against defective materials or workmanship. This warranty is void if the product has been damaged by accident, in shipment, unreasonable use, misuse, neglect, improper service, commercial use, repairs by unauthorized personnel or other causes not arising out of defects in materials or workmanship. This warranty is effective only if the product is purchased and operated in the USA and Canada, and does not extend to any units which have been used in violation of written instructions furnished by Salton, Inc., or to units which have been altered or modified or to damage to products or parts thereof which have had the serial number removed, altered, defaced or rendered illegible.

Warranty Disclaimers: This warranty is in lieu of all warranties expressed or implied and no representative or person is authorized to assume for Salton, Inc. any other liability in connection with the sale of our products. There shall be no claims for defects or failure of performance or product failure under any theory of tort, contract or commercial law including, but not limited to, negligence, gross negligence, strict liability, breach of warranty and breach of contract.

Salton, Inc. is not responsible or liable for indirect, special or consequential damages arising out of or in connections with the use or performance of the product or other damages with respect to loss of property, or loss of revenues or profit.

Warranty Performance: During the above one-year warranty period, a product with a defect will be either repaired or replaced with a reconditioned comparable model (at Salton, Inc.'s option) when the product is returned to the Salton, Inc. facility. The repaired or replacement product will be in warranty for the balance of the one-year warranty period and an additional one-month period. No charge will be made for such repair or replacement.

Service and Repair

If service is required, you should first call toll-free 1-800-233-9054 between the hours of 8:00 am and 5:00 pm Central Standard Time and ask for CONSUMER SERVICE. Please refer to model GR26VT when you call.

In-Warranty Service (USA) for an appliance covered under the warranty period, no charge is made for service or postage. Contact Consumer Service for return authorization.

In-Warranty Service (Canada) for an appliance covered under the warranty period, no charge is made for service or postage. Please return the product insured, packaged with sufficient protection, and postage and insurance prepaid to the address listed below. Customs duty/brokerage fee, if any, must be paid by the consumer.

Out-of-Warranty Service: A flat rate charge by model is made for out-of-warranty service. Include \$10.00 (U.S.) for return shipping and handling.

Salton, Inc. cannot assume responsibility for loss or damage during incoming shipment. For your protection, carefully package the product for shipment and insure it with the carrier. Be sure to enclose the following items with your appliance: any accessories related to your problem; your full return address and daytime phone number; a note describing the problem you experienced; a copy of your sales receipt or other proof of purchase to determine warranty status. C.O.D. shipments cannot be accepted.

Return the appliance to:

ATTN: SALTON HOUSEWARES

1708 SOUTH MISSOURI ST. MACON, MO 63552

For more information on Salton/MAXIM products:

visit our website: <http://www.salton-maxim.com>, or you can email us at: salton@saltonmaxim.com

© 2001 Salton, Inc.

Printed in China

P/Al 00000
ESF

Service and Repair

DO NOT attempt to repair your SALTON® EX-30 Three For All® Plus Coffeemaker. Attempts to repair this appliance yourself may render it dangerous to use. Should the appliance malfunction, you should first call toll free 1-800-233-9054 between the hours of 9:00 am and 5:00 pm Central Standard Time and ask for CONSUMER CUSTOMER SERVICE stating that you are a consumer with a problem. If the problem cannot be resolved, you will be asked to return the appliance to the factory for repair. Under no circumstances should you attempt to open the housing and repair the appliance. Should you do this, your warranty will be voided.



salton®