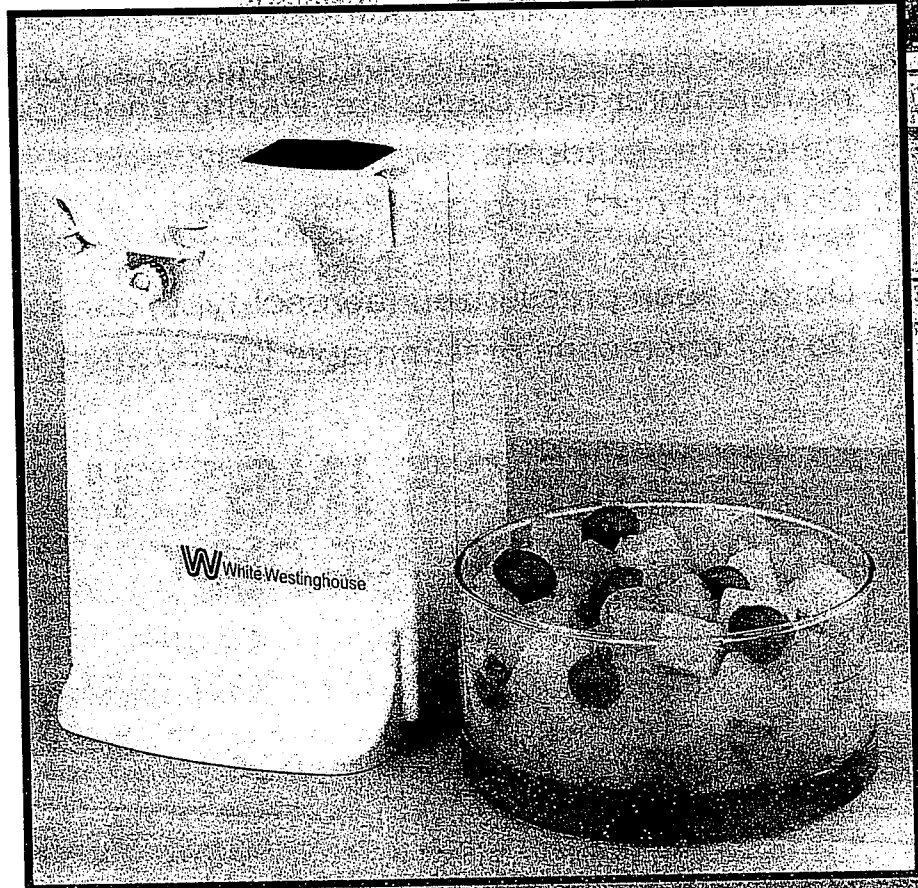
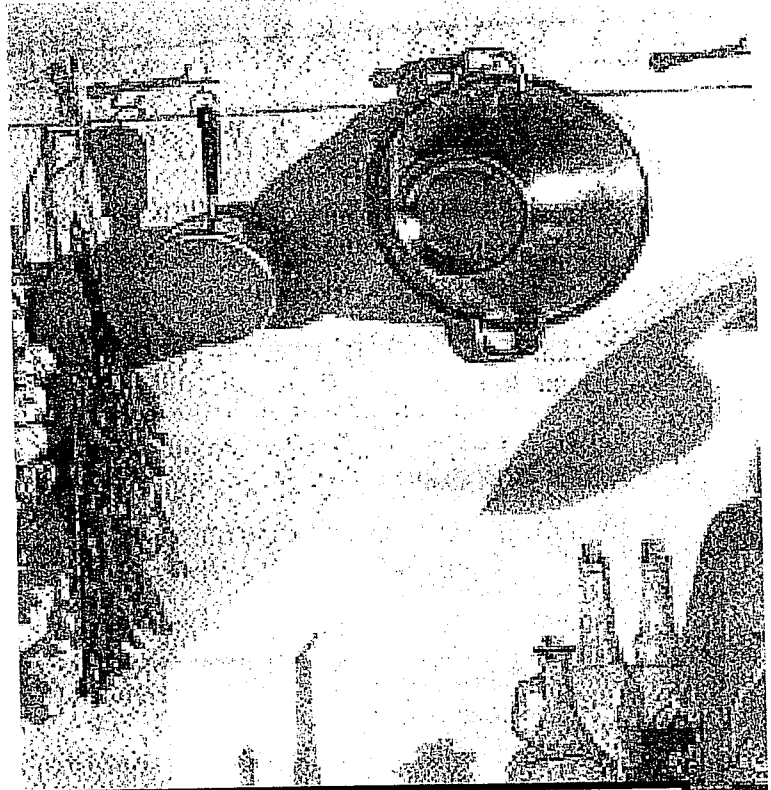


White-Westinghouse®

Can Opener

OWNER'S MANUAL



MODEL WCO9210A

IMPORTANT SAFETY INSTRUCTIONS

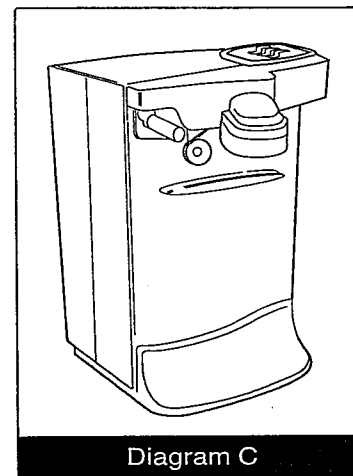
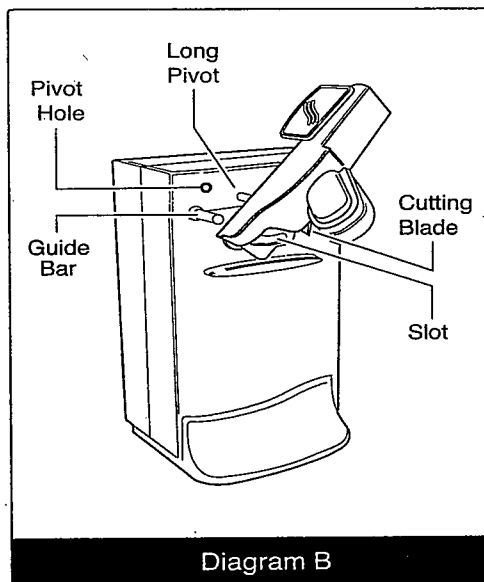
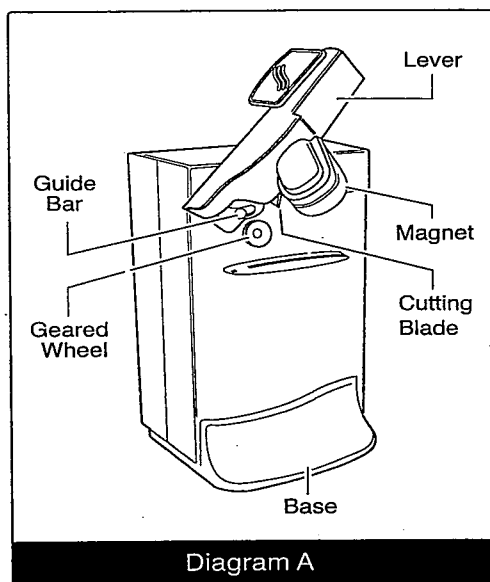
When using electrical appliances, basic safety precautions should always be followed, including the following:

1. Read all instructions
2. To protect against electrical hazards, do not immerse in water or other liquid.
3. Close supervision is necessary when any appliance is used by or near children.
4. Unplug from outlet when not in use, before putting on or taking off parts, and before cleaning.
5. Avoid contact with moving parts
6. Do not operate any appliance with a damaged cord or plug, or after the appliance malfunctions, or has been dropped or damaged in any manner. Return appliance to the nearest authorized service facility for examination, repair or electrical or mechanical adjustment.
7. The use of attachments not recommended or sold by the appliance manufacturer may cause fire, electric shock or injury.
8. Do not use outdoors.
9. Do not let cord hang over edge of table or counter or touch hot surfaces.
10. Do not open pressurized (aerosol-type) cans.
11. Do not open cans of flammable liquids such as lighter fluids.

SAVE THESE INSTRUCTIONS FOR HOUSEHOLD USE ONLY

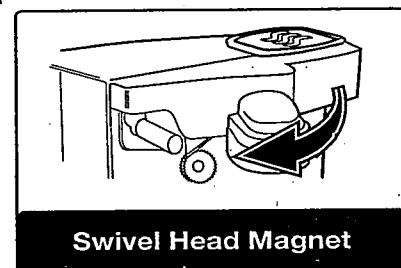
OPERATING INSTRUCTIONS

PRODUCT MAY VARY SLIGHTLY FROM ILLUSTRATIONS



POLARIZED PLUG

This appliance has a polarized plug (one blade is wider than the other). To reduce the risk of electric shock, this plug will fit into a polarized outlet only one way. If the plug does not fit fully into the outlet, reverse the plug. If it still does not fit, contact a qualified electrician. Do not attempt to modify the plug in any way.



IMPORTANT NOTES: To ensure continued efficient performance, keep the Cutting Blade clean. Can Opener should be turned off for one minute after operating for 5 minutes.

TO USE CAN OPENER

1. Raise Lever, place can under the Guide Bar and against the Geared Wheel. (See Diagrams A and B to identify parts.)
2. Press down on Lever to pierce lid of can. This automatically starts the cutting action. The Can Opener will continue to cut until the lid is completely severed from the can.
3. Grasp the can, then raise the Lever to release the can.
4. Carefully remove lid from the Magnet; use caution to avoid injury from edge of lid.

USER MAINTENANCE INSTRUCTIONS

This appliance requires little maintenance. It contains no user serviceable parts. Do not try to repair it yourself. Refer it to qualified personnel if servicing is needed.

TO CLEAN: Unplug unit from electrical outlet. To remove Lever, hold Can Opener facing you. Lift the Lever upward and gently pull toward you. Wash Lever in warm, soapy water and wipe outside surfaces of unit with a damp cloth.

To replace the Lever, hold the Can Opener facing you with the Lever in the lifted position, and put the Long Pivot into the Pivot Hole. At the same time the Guide Bar will align with the slot on the Lever (see Diagram C). Be sure to push completely into Pivot Hole. Then let Lever drop back onto top of Can Opener. If you do not push Lever completely into hole, it will not drop back onto top of Opener.

TO STORE: Unplug Can Opener and store in its box or in a dry place. Store the cord loosely coiled; never wrap it tightly around the unit. Do not put any stress on cord where it enters the appliance as it may cause the cord to fray and possibly break.

ONE-YEAR LIMITED WARRANTY

This White-Westinghouse product warranty extends to the original consumer purchaser of the product.

Warranty Duration: This product is warranted to the original consumer purchaser for a period of one (1) year from the original purchase date.

Warranty Coverage: This product is warranted against defective materials or workmanship. This warranty is void if the product has been damaged by accident, in shipment, unreasonable use, misuse, neglect, improper service, commercial use, repairs by unauthorized personnel or other causes not arising out of defects in materials or workmanship. This warranty is effective only if the product is purchased and operated in the USA, and does not extend to any units which have been used in violation of written instructions furnished, or to units which have been altered or modified or to damage to products or parts thereof which have had the serial number removed, altered, defaced or rendered illegible.

Warranty Disclaimers: This warranty is in lieu of all warranties expressed or implied, and no representative or person is authorized to assume any other liability in connection with the sale of our products. There shall be no claims for defects or failure of performance or product failure under any theory of tort, contract or commercial law including, but not limited to, negligence, gross negligence, strict liability, breach of warranty and breach of contract.

Warranty Performance: During the above one-year warranty period, a product with a defect will be either repaired or replaced with a comparable model (at the store's option) when the product is returned to Kmart. The repaired or replacement product will be in warranty for the balance of the one-year warranty period and an additional one-month period. No charge will be made for such repair or replacement.

Important Notice

If any parts are missing or defective, return this product to the place of purchase.

Consumer Service

This White-Westinghouse product is distributed by:

Salton, Inc.
550 Business Center Drive
Mount Prospect, IL 60056
E-mail: White-Westinghouse@saltonusa.com

Any questions or comments can be directed to Salton's address, or call the Consumer Service Department:

1-800-233-9054
Monday-Friday
8 a.m. - 5 p.m. CST

White-Westinghouse trademark used under license.
©1999 White Consolidated Industries, Inc.

Made in China for
Kmart Corporation
Troy, Michigan 48084

Printed in China

P/N 60442