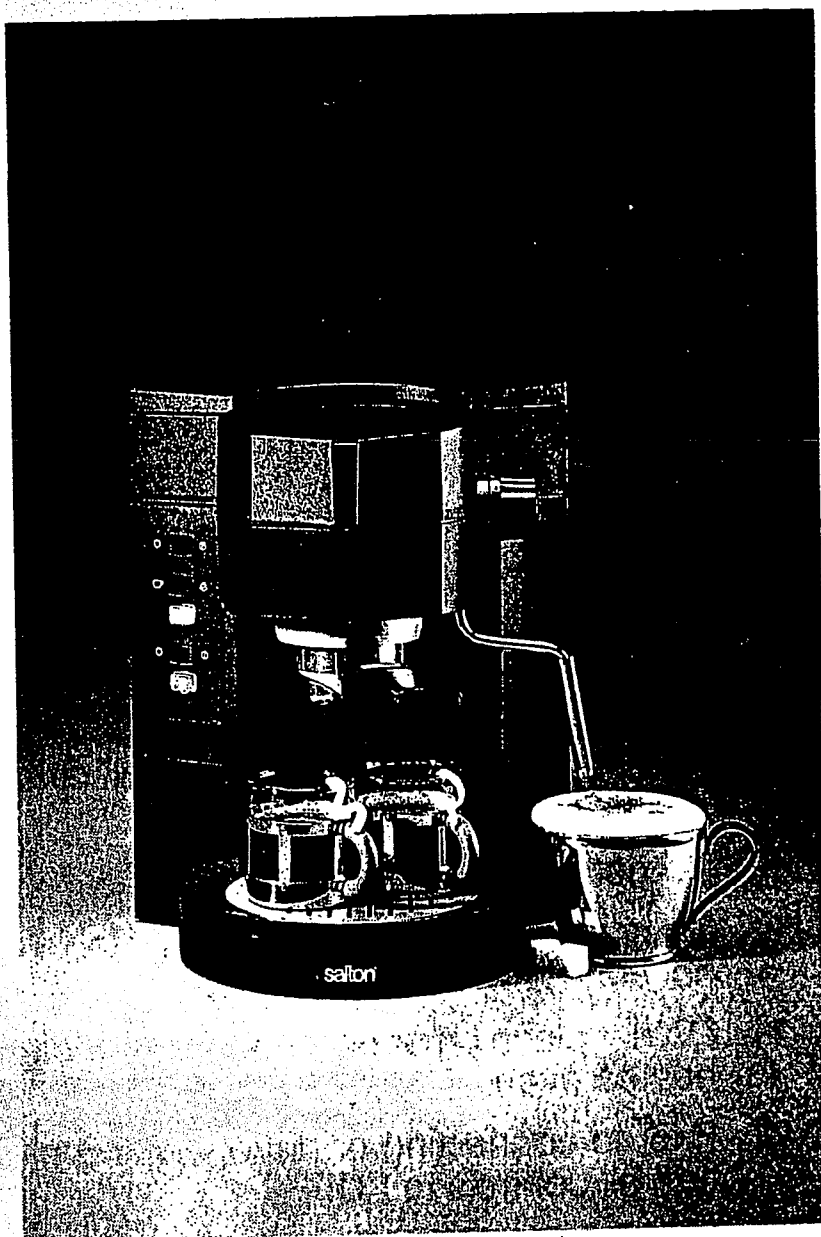


**OWNER'S MANUAL**  
**MODEL No. PE-60**

# **Cappuccino-Espresso Pro™**

**PUMP ESPRESSO CAPPUCCINO MAKER**



**salton®**

*Get a taste of the good life with Salton.*

# IMPORTANT SAFEGUARDS

When using electrical appliances, basic safety precautions should always be followed:

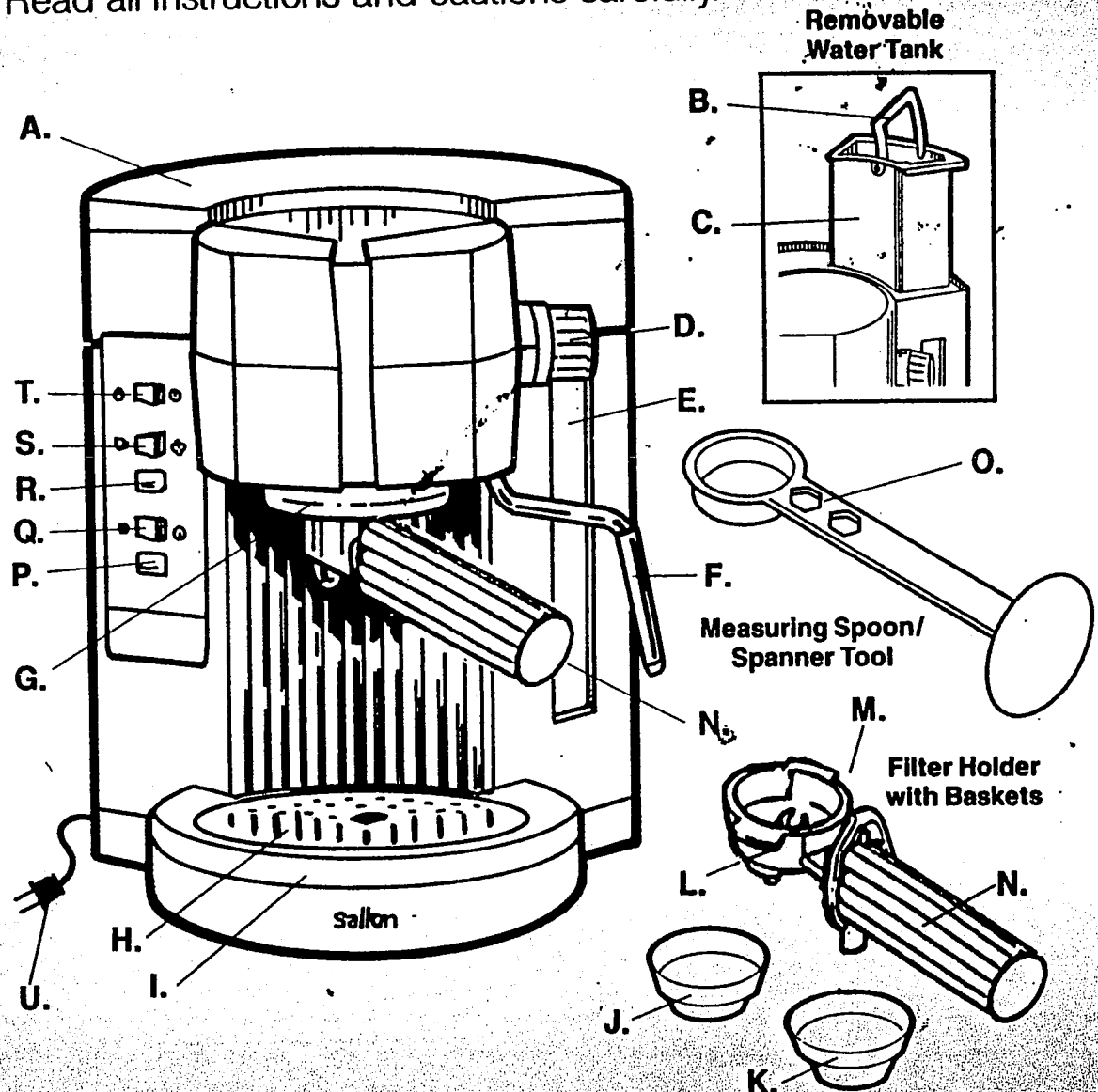
1. Read all instructions carefully.
2. Do not touch hot surfaces, use handles or knobs.
3. When in use, the appliance is under pressure and should never be left unattended.
4. To protect against fire, electric shock and personal injury, do not immerse cord, plug or appliance in water or other liquid.
5. Close supervision is necessary when any electrical appliance is used by or near children.
6. Unplug from outlet when not in use and before cleaning. Allow to cool before putting on or taking off parts and before cleaning.
7. Do not operate any appliance with a damaged cord or plug or after the appliance malfunctions or has been damaged in any manner. Return appliance to the Salton/MAXIM Service Center for examination, repair or adjustment.
8. The use of accessory attachments not recommended by Salton/MAXIM may result in fire, electric shock or personal injury.
9. Do not use outdoors.
10. Do not let cord hang over edge of table or counter or touch hot surfaces.
11. Do not place on or near a hot gas or electric burner, or in a heated oven.
12. Prior to connecting or disconnecting plug from wall outlet, turn all controls to **"OFF"**.
13. Do not use the appliance for other than intended use.

## SAVE THESE INSTRUCTIONS

For Household Use Only.

# Getting to Know Your Salton PE-60

Before using your Salton® **Cappuccino-Espresso Pro™** for the first time, you must become familiar with all of the parts. Read all instructions and cautions carefully.



- A. Water Tank Lid
- B. Water Tank Handle
- C. Water Tank
- D. Steam Knob
- E. Water Level Indicator
- F. Cappuccino Plus™ Frothing Attachment
- G. Filter Holder Ring
- H. Drip Tray
- I. Tray Griddle

- J. 1-Cup Filter Basket
- K. 2-Cup Filter Basket
- L. Filter Holder
- M. Filter Holder Lock
- N. Filter Holder Handle
- O. Measuring Spoon/Spinner Tool
- P. Red Pilot Light
- Q. On/Off Switch
- R. Yellow Coffee/Steam Light
- S. Coffee/Steam Selector Switch

- T. Pump Switch
- U. Cord with Plug

**Before making espresso for the first time**, operate the appliance once without coffee (*with water only*) following the instructions below. **NEVER USE THE APPLIANCE WITHOUT WATER.**

Allow a tank full of water to flow through — half through the filter holder, half through the steam/hot water pipe. This will thoroughly cleanse the unit.

**NOTE:** When operating for the first time, **flow water through the filter holder FIRST**. Use steam/hot water **SECOND**.

## Making Espresso

1. Lift the lid and remove the tank. Fill with cold water and replace by pushing it down. The water level shows on the sight glass.
2. Plug the appliance into a 120V AC outlet.
3. Make sure that the pump switch is on “□” and that the coffee/steam selector switch is turned towards the cup.
4. Turn the on/off switch to “Φ”. The red pilot light will illuminate, indicating that the appliance is turned on and the water is starting to heat. When the yellow light goes on, the water has reached the optimum temperature.
5. Put the 1 or 2 cup filter basket (depending on the number of cups required) into the filter holder. Fill it with one or two measuring spoons of ground coffee (one spoonful for each cup required).

**NOTE:** A fine drip grind must be used. Extra-fine espresso is too powdery for the appliance and may tend to cake in the basket and block the water from flowing through.

6. Insert the filter holder into the holding ring by lining it up with the marking on the left side and by turning it to the right.
7. Place the espresso cup(s) or a small carafe (not included) directly under the spout of the filter-holder and turn the pump switch to **☐**. After a few seconds, the espresso will start to flow and the yellow light will turn off. To stop the pumping process, simply turn the pump switch to “□”.
8. Turn the filter holder to the left and remove it. Push the filter holder lock forward, push it down and turn the filter holder upside down to remove the coffee.
9. To prepare additional cups of espresso, refill the filter with ground coffee, wait until the yellow light comes on and proceed following steps 5 through 8.

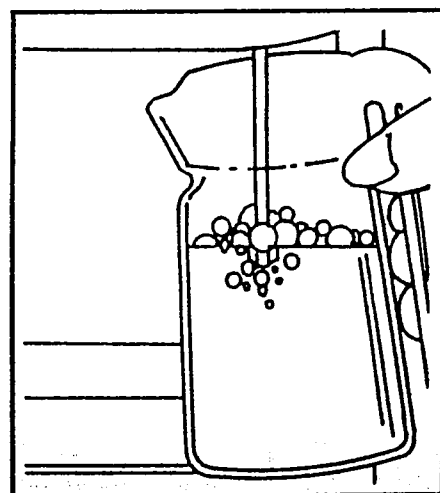
# Making Cappuccino

1. Cappuccino is a mixture of espresso coffee, milk and frothed milk. Fill a deep, narrow pitcher halfway with fresh, cold milk and set next to the Cappuccino-Espresso maker.
2. The **Cappuccino-Espresso Pro™** comes equipped with the **Cappuccino Plus™** — a new frothing attachment for perfectly frothed milk.
3. Follow steps 1 through 8 on page 3 for making espresso.
4. Turn the coffee/steam selector switch to the “**STEAM**” position and wait until the yellow light comes on.
5. Swing the **Cappuccino Plus™** nozzle outwards and hold the pitcher underneath. Immerse the nozzle in the liquid, turning the steam knob slowly forward to the maximum steam flow setting.

While frothing, hold the pitcher in a vertical position and move it up and down. A snorting noise indicates that the proper frothing is in process.

If the supply of steam is interrupted and the noise stops, the heating system may have run out of water. In this case, turn the steam knob back to the closed position and fill the water tank with water. Press the pump switch to **[P]**. Wait until hot water comes out of the filter holder ring. Once the heating system has refilled, turn the pump switch to “**□**” and wait until the steam light goes on.

Now repeat the steam production cycle. When finished, turn the steam knob back to “**O**,” push the coffee/steam selector switch back to the “**CUP**” position and switch the appliance off.



## Producing Hot Water

You can easily prepare hot water for making tea, broth, etc. with your **Cappuccino-Espresso Pro™**. Switch the appliance to “**φ**” — the red light will come on. Push the coffee/steam selector switch to the “**STEAM**” position and wait until the yellow light goes on.

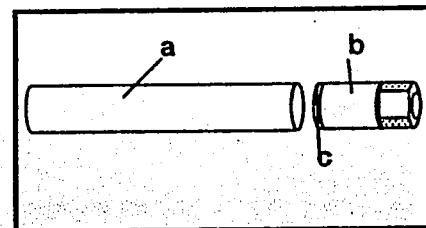
## Producing Hot Water *(continued)*

Place a heat resistant receptacle under steam pipe, then turn the steam knob slowly to the front, to the maximum setting. Press the pump switch to **[P]**. Hot water flow. You can interrupt or stop the process at any time by pressing the pump switch to "**[□]**" and turning the steam knob back. When finished, switch the appliance off.

## User Maintenance Instructions

1. Unplug the appliance from the electrical outlet and allow to cool **completely** before cleaning.
2. Empty the filter holder and basket. Push the filter holder lock to the front and then turn it upside down. Rinse thoroughly with warm water and dry well.
3. The drip tray and the tray griddle can be removed and washed in warm water.
4. **CAUTION:** Do not touch the *Cappuccino Plus™* Frothing Attachment when hot. If the *Cappuccino Plus™* Frothing Attachment becomes blocked, clean with a needle. If necessary, once it has cooled, remove it using the spanner on the handle of the measuring spoon, turning it clockwise.

Remove the body "a" from the pipe "b," and brush in lukewarm water, taking care not to damage the seal "c." (See picture on right.) Reassemble the *Cappuccino Plus™* Frothing Attachment and screw back onto pipe "F." (See page 2 of this manual.)



5. Wipe the outside of your PE-60 with a damp cloth. **Never immerse the appliance in water or any other liquid.**
6. This appliance is for household use only.

## Polarized Plug

This appliance has a **polarized plug** (one blade is wider than the other), as a safety feature. This plug will fit in a polarized outlet only one way. If the plug does not fit fully in the outlet, reverse the plug. If it still does not fit, contact a qualified electrician. Do not attempt to defeat this safety feature.

# Short Cord Instructions

A short power-supply cord (or detachable power-supply cord) is provided to reduce the risk resulting from becoming entangled in or tripping over a longer cord.

Longer detachable power-supply cords or extension cords are available and may be used if care is exercised in their use.

If a longer detachable power-supply cord or extension cord is used, (1) the marked electrical rating of the extension cord should be at least as great as the electrical rating of the appliance, and (2) the cord should be arranged so that it will not drape over the counter top or table top where it can be pulled on by children or tripped over unintentionally.

## Descaling

If you live in a hard water area, minerals and calcium found in the water will accumulate and effect the operation of your **Cappuccino-Espresso Pro™**. Your PE-60 should be cleaned approximately every six months (this may vary depending on water conditions). Use distilled vinegar in the following manner to remove the mineral deposits, also referred to as "scale."

1. Before cleaning your PE-60, make sure it has been disconnected from the wall outlet and the switch is in the "**OFF**" position.
2. Remove the filter holder.
3. Fill the water tank with distilled vinegar and place a carafe under the filter holder ring.
4. Plug into wall outlet.
5. Make sure that the pump switch is on "**O**" and that the coffee/steam selector switch is turned towards the "**CUP**" position.
6. Switch the appliance to the "**ϕ**" position — as soon as the yellow light goes on. Turn the pump switch to **P**. After a few seconds, the vinegar will start to flow into the carafe.
7. Let the whole tank of vinegar run through the machine — then turn off the appliance by switching the coffee pump switch and the on/off switch to "**O**."
8. Repeat the above steps using cold water to rinse away any residual vinegar. Repeat twice.

No other servicing should be attempted by the user.

## LIMITED WARRANTY

Products distributed by Salton/MAXIM Housewares, Inc. are warranted for one year from date of purchase against defects in workmanship and material. During that period these defects will be repaired or the product will be replaced at Salton/MAXIM's option, without charge. This warranty covers normal consumer usage and does not cover damage which occurs in shipment or failure which results from alteration, accident, misuse, abuse, neglect, installation, commercial use or improper maintenance. This warranty is effective only if the product is purchased and operated in the USA, and does not extend to any units which have been used in violation of written instructions furnished by Salton/MAXIM Housewares, Inc., or to units which have been altered or modified without authorization of Salton/MAXIM Housewares, Inc., or to damage to products or parts thereof which have had the serial number removed, altered, defaced or rendered illegible. This warranty does not cover damage which results from unauthorized repairs.

## Service and Repair

DO NOT attempt to repair your SALTON® PE-60 Cappuccino-Espresso Pro™. Attempts to repair this appliance yourself may render it dangerous to use. Should the appliance malfunction, you should first call toll free 1-800-233-9054 between the hours of 9:00 am and 5:00 pm Central Standard Time and ask for CONSUMER CUSTOMER SERVICE stating that you are a consumer with a problem. If the problem cannot be resolved, you will be asked to return the appliance to the factory for repair. Under no circumstances should you attempt to open the housing and repair the appliance. Should you do this, your warranty will be voided.

## To Return for Service

1. Securely package and return the product, PREPAID to:  
Salton/MAXIM Housewares, Inc., Repair Department  
550 Business Center Drive, Mt. Prospect, IL 60056
2. Be sure to enclose:
  - a. Your name, address and phone number.
  - b. The date of purchase (or receipt as a gift).
  - c. An explanation of the malfunction or reason for return.
  - d. Eight dollars (\$8.00) Check or Money Order payable to Salton/MAXIM Housewares, Inc. for return postage and handling.
  - e. To insure prompt "In-Warranty" service, be sure to include proof of date of purchase.

We recommend you take the necessary precaution of insuring the parcel.
3. Toll Free Number: 1-800-233-9054.



**salton®**