

OWNER'S MANUAL

Model No. JBG22

Salton®

**3 IN 1 JUICE EXTRACTOR,
BLENDER AND GRINDER**



IMPORTANT SAFEGUARDS

When using electrical appliances, basic safety precautions should always be followed, including the following:

1. Read all instructions.
2. To protect against risk of electrical shock do not put cord, plugs, or appliance in water or other liquid.
3. Close supervision is necessary when any appliance is used by or near children.
4. Unplug from outlet when not in use, before putting on or taking off parts, and before cleaning.
5. Avoid contacting moving parts.
6. Do not operate any appliance with a damaged cord or plug or after the appliance malfunctions, or is dropped or damaged in any manner. Contact Consumer Service for examination, repair or electrical or mechanical adjustments.
7. The use of attachments, including canning jars, not recommended by the manufacturer may cause a risk of injury to persons.
8. Do not use outdoors.
9. Do not let cord hang over edge of table or counter.
10. Do not let cord contact hot surface, including the stove.
11. Keep hands and utensils out of the container while blending to reduce the risk of severe injury to persons or damage to the appliance. A scraper may be used but must be used only when the appliance is not running.
12. Blades are sharp, handle carefully.
13. To reduce the risk of injury, never place cutter-assembly blades on base with out jar properly attached.
14. Always operate blender with cover in place.
15. When blending hot liquids, remove center piece of two-piece cover.
16. Never add to container while appliance is operating.
17. Container must be properly in place before operating appliance.
18. Never feed food by hand. Always use food plunger.
19. Always make sure juicer cover is locked securely in place before motor is turned on. Do not unfasten locking clip while juicer is in operation.
20. Be sure to turn switch to OFF position after each use of your juicer. Make sure the motor stops before disassembling.
21. Do not put your fingers or other objects into the juicer opening while it is in operation. If food becomes lodged in opening, use food plunger or another piece of fruit or vegetable to push it down. When this method is not possible turn the motor off and disassemble juicer to remove remaining food.
22. Check Grinder Container for presence of foreign objects before using.

SAVE THESE INSTRUCTIONS
For Household Use Only

Additional Important Safeguards

1. All users of this appliance must read and understand this Owner's Manual before operating or cleaning this appliance.
2. The cord to this appliance should be plugged into a 120V AC electrical outlet only.
3. Do not leave this appliance unattended during use.
4. If this appliance begins to malfunction during use, immediately turn the unit OFF and unplug the cord. Do not use or attempt to repair the malfunctioning appliance.
5. If this appliance falls or accidentally becomes immersed in water, unplug it immediately. **Do not reach into the water!** Do not use this appliance after it has fallen into or has become immersed in water.
6. To reduce the risk of injury to persons or property, never use this appliance in an unstable position.
7. Do not use this appliance for other than its intended use.
8. Do not use the container if cracked or chipped.

Polarized Plug

This appliance has a polarized plug (one blade is wider than the other). To reduce the risk of electric shock, this plug is intended to fit into a polarized outlet only one way. If the plug does not fit fully in the outlet, reverse the plug. If it still does not fit, contact a qualified electrician. Do not attempt to modify the plug in any way.

Short Cord Instructions

A short power-supply cord is provided to reduce the risk resulting from becoming entangled in or tripping over a longer cord.

Do not use an extension cord with this product.

Electric Power

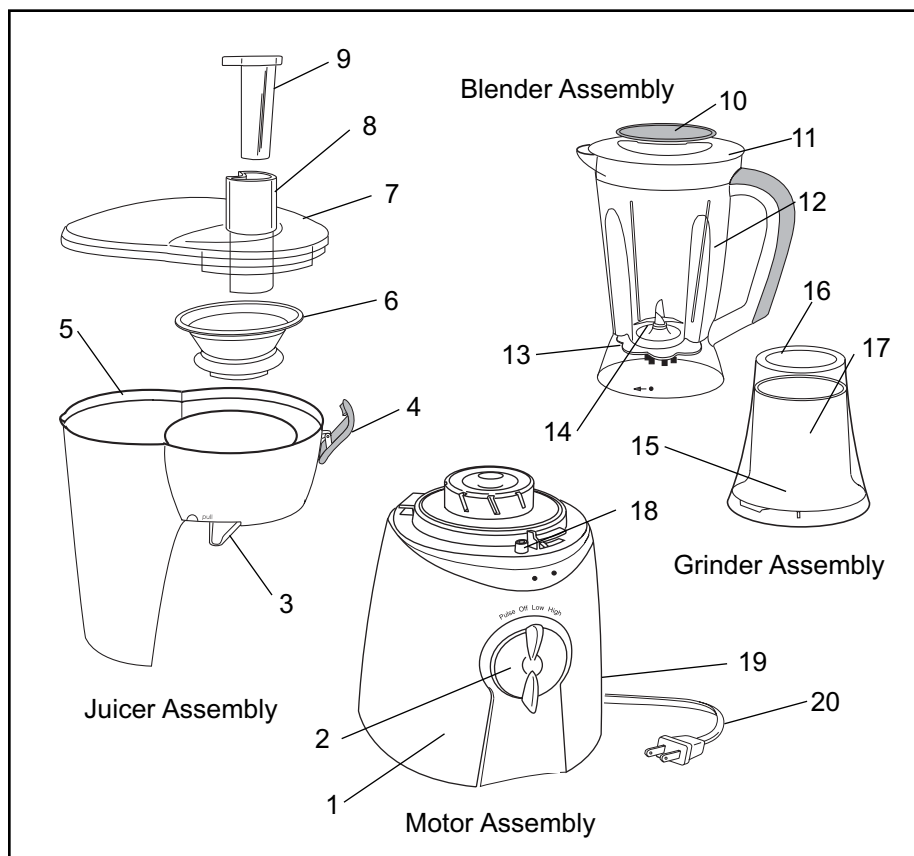
If the electric circuit is overloaded with other appliances, your appliance may not operate properly. It should be operated on a separate electrical circuit from other appliances.

Introduction

Congratulations on your purchase of the Salton® 3 in 1 Juice Extractor, Blender and Grinder. This convenient 3 in 1 appliance will prepare delicious and nutritious juices, blend and grind your favorite coffee beans, cheese or nuts, all with the touch of one button! After extracting juice from fruits and vegetables the remaining vitamin enriched pulp can be used as an ingredient for soups, sauces, jams and desserts!

Getting to Know Your SALTON® JBG22

3 in 1 Juice Extractor, Blender and Grinder



- | | |
|---|--|
| 1. Motor Housing | 11. Blender Cover (P/N 71017BL) |
| 2. Speed Selector | 12. Blender Jar (P/N 71019) |
| 3. Juice Spout | 13. Blender Seal Ring (P/N 71020) |
| 4. Locking Clip | 14. Blender Blade Assembly (P/N 71021) |
| 5. Juice Extractor Housing (P/N 71016BL) | 15. Grinder Blade Assembly (Not Shown) |
| 6. Juice Extractor Blade Assembly (P/N 71015) | 16. Grinder Cover (P/N 71022) |
| 7. Juice Extractor Cover (P/N 71014) | 17. Grinder Container (P/N 71023BL) |
| 8. Chute | 18. Safety Switch |
| 9. Food Plunger (P/N 71013W) | 19. Cord Storage Area |
| 10. Blender Cover Insert (P/N 71018W) | 20. Power Cord |

Before Using for the First Time

CAUTION: Do not immerse Motor Housing, Cord, or Plug in water or any other liquid.

CAUTION: Blades assemblies inside the Juice Extractor and the Blender are sharp. To prevent injury, use care when handling. Do not attempt to disassemble the Blade Assemblies.

1. Remove all packaging material.
2. Wash the Juice Extractor Housing, Containers, Covers, Food plunger and Blade Assemblies in warm water and a mild detergent. Rinse all parts and dry thoroughly. Do not wash in a dishwasher.
3. Wipe the Motor Housing with a soft, damp cloth and wipe dry. Never immerse the Motor Housing in water or any other liquid.
4. Make sure the appliance is unplugged and practice assembly and disassembly before adding foods to be processed.

Juice Extractor

Parts Assembly

1. Make sure the appliance is unplugged and the Speed Selector is in the OFF position.
2. Place the Juice Extractor Housing on the Motor Housing.
3. Align the dot on the Juice Extractor Housing with the right-hand dot on the Motor Housing.
4. Press down on the Juice Extractor Housing while turning in the direction of the arrow (clockwise) until it locks in place. When properly locked, the dot on the Juice Extractor Housing will be aligned with the left-hand dot on the Motor Housing and the locking tab will engage the Safety Switch.
5. Place the Juice Extractor Blade Assembly on the Base and press down on the rim of the Juice Extractor Blade Assembly until firmly seated.
6. Align the Juice Extractor Cover with the top of the Housing. Insert the tab at the back of the Cover into the notch at the back of the Housing and press down.
7. Raise the Locking Clip over the top of the Cover. Insert the tab into the notch on the Cover. Press down on the Locking Clip to lock in place.
8. Place the Food Plunger into the Chute to complete assembly.
9. Before operating, be sure to pull out the Juice Spout and place a container beneath the Spout to collect the juice.

Operation

Juice Extraction

1. Wash fruits and vegetables well. Peeling is not necessary with the exception of citrus fruits and pineapple.
2. Core apples or pears and remove stones from cherries, prunes, apricots and peaches.
3. Cut fruits and vegetables small enough to fit into the Chute.
4. Follow the Assembly Instructions. Be sure to pull out the Juice Spout and place a container beneath the spout to collect the juice. See Figure 1.
5. Plug the Power Cord into a 120V AC electrical outlet.
6. Turn the Speed Selector to Low for pulp free juice, High for thicker, pulpier juice or Pulse for processing in short bursts.
7. Remove the Food plunger and drop the fruit or vegetable pieces down the Chute.
8. Insert the Food plunger into the Chute to gently press the food down onto the Juice Extractor Blade Assembly.
9. When the juice extraction process is complete, or the juice container is full, turn the Speed Selector to OFF and unplug the unit.
10. To continue extracting more juice follow steps 1-9.
11. After use, follow the cleaning instructions as detailed in *Care and Cleaning*.

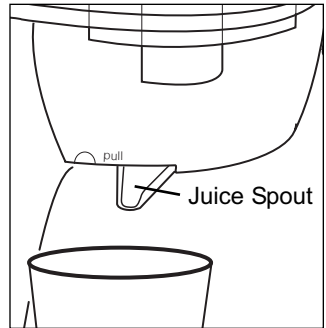


Figure 1

Parts Disassembly

1. Make sure the appliance is unplugged and the Speed Selector is in the off position.
2. Lift the Locking Clip and release it from the Cover.
3. Remove the cover. NOTE: Do not attempt to remove the Juice Extractor Housing from the Motor Housing without first removing the Cover.
4. Firmly grasp the rim of the Juice Extractor Blade Assembly and pull straight up to remove.
5. Turn the Juice Extractor Housing counter clockwise to remove from the Motor Housing.

Blender

Parts Assembly

CAUTION: Use extreme care when handling the Blade Assembly. Do not touch the Blades with your fingers. The Blades are very sharp and can cause injury if touched.

1. Make sure the appliance is unplugged and the Speed Selector is in the OFF position.
2. Before attaching the Blade Assembly to the Blender Jar, place the Seal Ring over the Blades then press it into position on the base of the Blade Assembly.
3. Place the Blender Jar over the Blade Assembly. Align the locking tabs on the Blade Assembly with the notches at the base of the Blender Jar. Firmly hold the Blender Jar and turn the Blade Assembly clockwise until both parts are securely locked together.

NOTE: Make sure the Blade Assembly is firmly attached to the Blender Jar before putting any foods or liquids into the Container.

4. Place the Blender Jar on the Motor Housing.
5. Align the dot on the Blender Jar slightly to the right of the right-hand dot on the Motor Housing.
6. Gently press down on the Blender Jar while turning in the direction of the arrow (clockwise) until it locks in place. When properly locked, the dot on the Blender Jar will be aligned with the left-hand dot on the Motor Housing and the locking tab will engage the Safety Switch.
7. Place the Blender Cover with Insert on the Blender Jar to complete assembly.

Blending

1. Follow the Assembly Instructions. Make sure the Blender Jar is properly locked in place.
2. Remove the Blender Cover.
3. Place ingredients and liquid to be processed into the Blender Jar. Replace the Blender Cover and Insert. Make sure it is properly locked in place.
4. Plug the Power Cord into a 120V AC electrical outlet.
5. Turn the Speed Selector to Low for light blending, High for heavier blending or Pulse for processing in short bursts.

NOTE: When using blender to crush ice add a tablespoon of water per 7 ice cubes to aid the process.

6. When the blending process is complete, turn the Speed Selector to OFF and unplug the unit.
7. After use, follow the cleaning instructions as detailed in *Care and Cleaning*.

Parts Disassembly

1. Make sure the appliance is unplugged and the Speed Selector is in the OFF position.
2. Turn the Blender Jar counter clockwise and remove it from the Motor Housing.
3. To remove the Blade Assembly, firmly hold the Blender Jar and turn the Blade Assembly counter clockwise to disengage the locking tabs.

Grinder Parts Assembly

1. Make sure the appliance is unplugged and the Speed Selector is in the OFF position.
2. Place the Grinder Cover/Container over the Grinder Blade Assembly and align the two arrows, as seen in Figure 2. Press both parts together, then turn the Grinder Cover/Container clockwise until both parts are locked together.
3. Place the Grinder on the Motor Housing.
4. Align the dot on the Grinder Cover/Container with the right-hand dot on the Motor Housing.
5. Gently press down on the Grinder Cover/Container while turning in the direction of the arrow (clockwise) until it locks in place. When properly locked, the dot on the Grinder Cover/Container will be aligned with the left-hand dot on the Motor Housing and the locking tab will engage the Safety Switch.

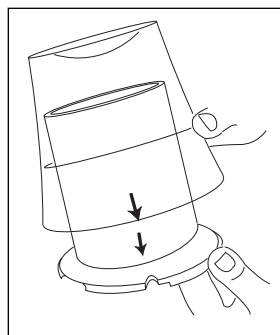


Figure 2

Grinding

1. Place the ingredients to be processed into the Container before assembling it to the Grinder Cover. Do not overfill.
NOTE: When grinding coffee beans, do not grind more than 1 1/2 ounces (45 grams) at a time.
2. Place the Grinder Cover/Container on the Motor Housing and lock the assembly in place, as described in Step 5 above.
3. Plug the Power Cord into a 120V AC electrical outlet.
4. Speed selection will depend on the type of food being processed. Turn the Speed Selector to Low for light grinding, High for heavier grinding or Pulse for processing in short bursts.
5. When the grinding process is complete, turn the Speed Selector to the OFF position and unplug the appliance.
6. After use, follow the cleaning instructions as detailed in *Care and Cleaning*.

Parts Disassembly

1. Make sure the appliance is unplugged and the Speed Selector is in the OFF position.
2. Turn the Grinder Cover/Container counterclockwise and remove it from the Motor Housing.
3. Turn the Grinder Cover/Container upside down. Unlock the Grinder Blade Assembly by turning counter clockwise.
4. Lift the Grinder Blade Assembly straight up to separate the two parts.

Care and Cleaning

CAUTION: Always unplug the appliance before cleaning. Never immerse the Motor Assembly, Cord, or Plug in water or other liquids. Never use scouring pads or harsh cleansers to clean your appliance as they may damage the surface.

The Salton® 3 In 1 Juice Extractor, Blender and Grinder requires little maintenance. It contains no user-serviceable parts. Contact qualified personnel if the product requires servicing.

- Never use harsh or abrasive cleansers or materials, especially those containing alcohol or solvents, to clean your appliance.
- Wipe all exterior surfaces with a soft cloth dampened with water.
- Refer to the detailed Disassembly Instructions for each of the three functions to properly remove parts.

CAUTION: Blades in the Blender and the Juicer are sharp. Handle very carefully when cleaning.

- Wash all removable parts with warm, soapy water. Rinse well and dry all parts thoroughly. **Do not wash removable parts in dishwasher.**

Storage

Unplug and clean unit and all removable parts. Store in original box or in a clean, dry place. Never store appliance while it is plugged in. Wrap the cord around the cord storage area beneath the Motor Assembly. Never place any stress on cord, especially where the cord enters the unit, as this could cause the cord to fray and break.

NOTES:

LIMITED ONE YEAR WARRANTY

Warranty Coverage: This product is warranted to be free from defects in materials or workmanship for a period of one (1) year from the original purchase date. This product warranty is extended only to the original consumer purchaser of the product and is not transferable. For a period of one (1) year from the date of original purchase of the product, our Repair Center will, at its option, either (1) repair the product or (2) replace the product with a reconditioned comparable model. These remedies are the purchaser's exclusive remedies under this warranty.

Warranty Service: To obtain warranty service, you must call our warranty service number at 1-800-233-9054 for return instructions on how to deliver the product, in either the original packaging or packaging affording an equal degree of protection to the Repair Center specified below. You must enclose a copy of your sales receipt or other proof of purchase to demonstrate eligibility for warranty coverage.

To return the appliance, ship to:
email:

To contact us, please write to, call, or

ATTN: Repair Center
ment

708 South Missouri Street
Macon, MO 63552 USA

Consumer Relations Depart-

ment
PO Box 7366
Columbia MO 65205-7366 USA
1-800-233-9054
E-mail:
consumer_relations@toastmaster.com

What Is Not Covered: This warranty does not cover damage resulting from misuse, accident, commercial use, improper service or any other damage caused by anything other than defects in material or workmanship during ordinary consumer use. This warranty is invalid if the serial number has been altered or removed from the product. This warranty is valid only in the United States and Canada.

LIMITATION ON DAMAGES: THERE SHALL BE NO LIABILITY FOR ANY INCIDENTAL OR CONSEQUENTIAL DAMAGES FOR BREACH OF ANY EXPRESS OR IMPLIED WARRANTY OR CONDITION ON THIS PRODUCT.

DURATION OF IMPLIED WARRANTIES: EXCEPT TO THE EXTENT PROHIBITED BY APPLICABLE LAW, ALL IMPLIED WARRANTIES AND CONDITIONS, INCLUDING, WITHOUT LIMITATION, IMPLIED WARRANTIES AND CONDITIONS OF MERCHANTABILITY AND FITNESS FOR A PARTICULAR PURPOSE OR USE ON THIS PRODUCT ARE LIMITED IN DURATION TO THE DURATION OF THIS WARRANTY.

Some jurisdictions do not allow the exclusion or limitation of incidental or consequential damages, or allow limitations on how long an implied warranty lasts, so the above limitations or exclusions may not apply to you. This warranty gives you specific legal rights and you may have other rights under the laws of your jurisdiction.

For more information on our products, visit our website: www.maxim-toastmaster.com.