

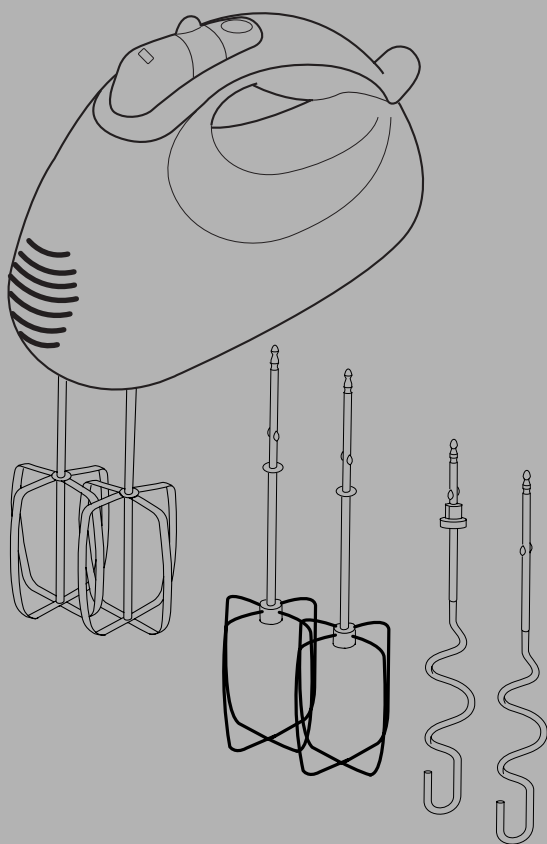
# Michael Graves Hand Mixer

owner's manual

---

SAVE THIS USE AND CARE BOOK

---



Model MGHM10

---

# IMPORTANT SAFEGUARDS

When using electrical appliances, basic safety precautions should always be followed, including the following:

1. Read all instructions.
2. To protect against risk of electrical shock do not put cord, plugs, or appliance in water or other liquid.
3. Close supervision is necessary when any appliance is used by or near children.
4. Unplug from outlet when not in use, before putting on or taking off parts, and before cleaning.
5. Avoid contacting moving parts.
6. Do not operate any appliance with a damaged cord or plug or after the appliance malfunctions, or has been damaged in any manner. Contact Consumer Service.
7. The use of accessory attachments not recommended or sold by the manufacturer may cause fire, electric shock or injury.
8. Do not use outdoors.
9. Do not let cord hang over edge of table or counter.
10. Do not let cord contact hot surface, including the stove.
11. Keep hands, hair, clothing, as well as spatulas and other utensils away from beaters during operation to reduce the risk of injury to persons, and/or damage to the mixer.
12. Remove beaters from mixer before washing.

## SAVE THESE INSTRUCTIONS

**For Household Use Only**

## Additional Important Safeguards

1. All users of this appliance must read and understand this Owner's Manual before operating or cleaning this appliance.
2. The cord to this appliance should be plugged into a 120V AC electrical outlet only.
3. Do not leave this appliance unattended during use.
4. If this appliance begins to malfunction during use, immediately turn the unit to '0' (off) and unplug the cord. Do not use or attempt to repair the malfunctioning appliance.
5. If this appliance falls or accidentally becomes immersed in water, unplug it immediately. **DO NOT REACH INTO THE WATER.** Do not use this appliance after it has fallen into or becomes immersed in water.
6. To reduce the risk of injury to persons or property, never use this appliance in an unstable position.
7. Do not use this appliance for other than its intended use.

## Polarized Plug

This appliance has a **polarized plug** (one blade is wider than the other). To reduce the risk of electric shock, this plug is intended to fit into a polarized outlet only one way. If the plug does not fit fully in the outlet, reverse the plug. If it still does not fit, contact a qualified electrician. Do not attempt to modify the plug in any way.

## Electric Power

If the electric circuit is overloaded with other appliances, your appliance may not operate properly. It should be operated on a separate electrical circuit from other appliances.

## Features

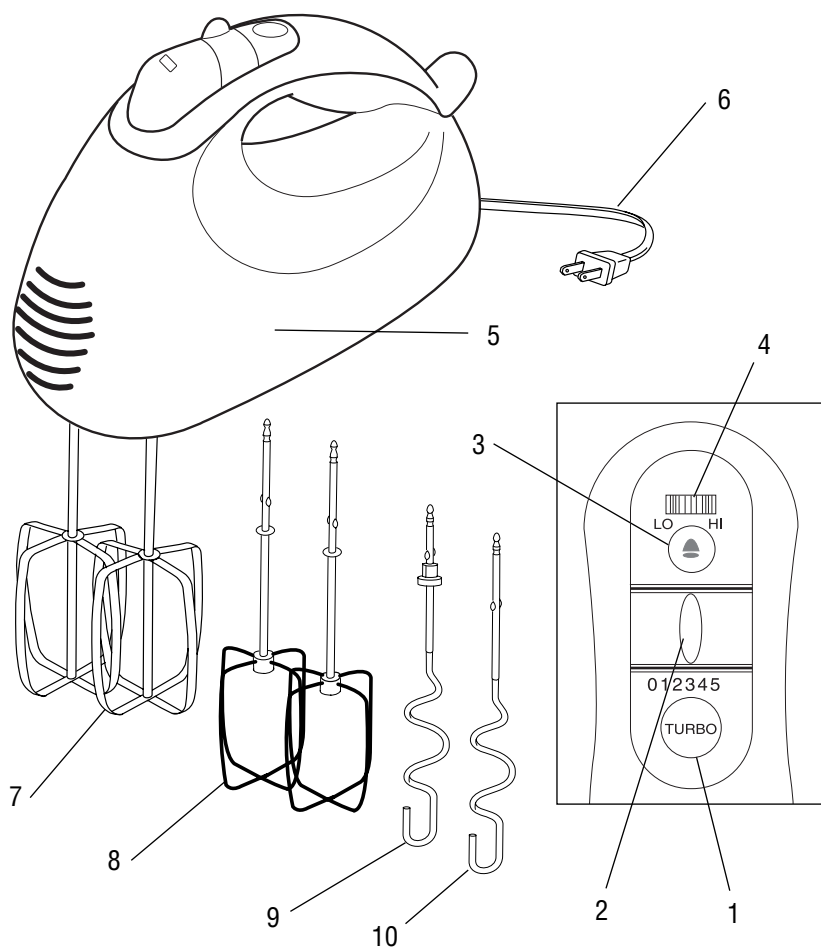
**Speed Control Selector** - The Speed Control Selector has 5 initial speed settings with an optional LO/HI Selector for additional speed control.

**Turbo Button** - The Turbo feature is specially designed for tough mixing tasks. When you feel the Mixer slowing down or straining during tough mixing tasks, press the Turbo Button to obtain maximum mixing performance. As soon as the Turbo Button is released, the Mixer will return the speed setting you were previously using.

**Eject Button** - This Mixer features a conveniently located Eject Button which allows for easy release of the accessories. Remove the Power Cord from the electrical outlet then press down on the Eject Button. The accessories will be ejected from the Mixer.

**Accessories** - The Mixer comes equipped with Flat Beaters, Dough Hooks and Wire Beaters. The Flat Beaters may be used to mix batter or whip potatoes. The Dough Hooks may be used for kneading or mixing heavy batter, and the Wire Beaters may be used to whip or mix light batters.

# Getting To Know Your Michael Graves MGHM10 Hand Mixer



- |                           |   |
|---------------------------|---|
| 1. Turbo Button           | 7. Flat Beater (P/N 70999)                  |
| 2. Speed Control Selector | 8. Wire Beater (P/N 71000)                  |
| 3. Eject Button           | 9. Dough Hook w/Plastic Adaptor (P/N 71001) |
| 4. LO/HI Selector         | 10. Dough Hook (P/N 70504)                  |
| 5. Main Body              |   |
| 6. Power Cord             |   |

## Before First Time Use

1. Carefully unpack the Mixer.
2. Wash the Beaters and Dough Hooks in warm, soapy water. Rinse well and dry thoroughly.
3. Wipe Mixer with a soft, clean cloth or sponge. **Never immerse Main Body in water or any other liquid.**

## How to Install Your Mixer Attachments

**CAUTION:** Always unplug Mixer from outlet before installing or removing attachments. Use either both Flat Beaters, both Wire Beaters or both Dough Hooks. Do not attempt to use a Dough Hook with a Flat Beater or a Wire Beater. This could damage the Mixer.

**NOTE:** One of the Dough Hooks has a small plastic adaptor near the top of its stem as shown in Figure 1. This particular Dough Hook is to be inserted into the left hand attachment hole only. See Figure 2. Make sure the flat sides of the plastic adaptor are properly aligned with the flat sides of the left hand attachment hole. There are no such restrictions with either type Beater.

1. Make sure the Mixer is unplugged and the Speed Control Selector is in the '0' position.
2. Choose attachment type. **Do not attempt to use a beater with a dough hook; use same type attachments only.**

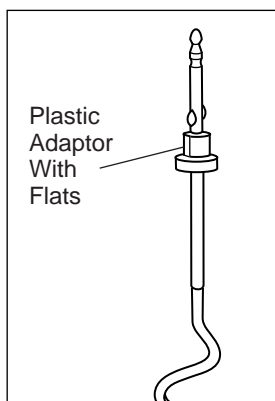


Figure 1

3. Push attachment stem into Mixer hole and rotate until it locks into position. The attachment will fit snugly into the hole. Repeat for second attachment.
4. After installing attachments, gently tug on each attachment stem to be sure it is securely in place.

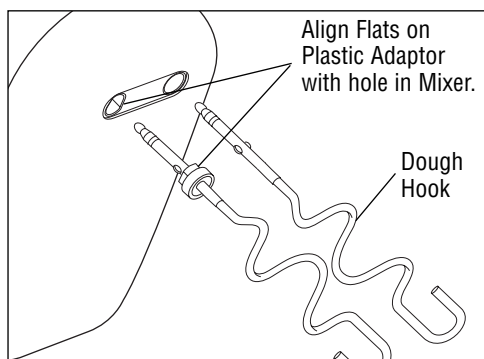


Figure 2

# Instructions for Use

1. Be sure Mixer is unplugged, the Speed Control Selector is in the '0' position and the LO/HI Selector is in the LO position.
2. Attach Beaters or Dough Hooks. See *HOW TO INSTALL YOUR MIXER ATTACHMENTS*.
3. Plug Mixer into a standard 120V AC electrical outlet.
4. With Mixer Attachments securely in place, place Attachments directly into bowl.
5. Move the Speed Control Selector to the right as needed to obtain your desired mixing speed.

**NOTE:** If you have moved the Speed Control Selector to position #5 and it appears additional speed is needed, move the Speed Control Selector back to position #1 then move the LO/HI Selector to HI. This will double the speed of the Mixer in relation to each speed setting.

6. When the mixing task is complete, turn the Speed Control Selector to '0' and then unplug the power cord.
7. Raise the Mixer, carefully grasp Attachments and push down on the Eject Button to eject the Attachments.
8. Scrape excess batter off the Attachments using a rubber or plastic spatula. DO NOT strike Attachments on the rim of the bowl.
9. Clean the Mixer and the Attachments as instructed in *USER MAINTENANCE INSTRUCTIONS*.

# User Maintenance Instructions

This Michael Graves 10 Speed Hand Mixer requires little maintenance. It contains no user-serviceable parts. Do not try to repair it yourself. Any servicing requiring disassembly other than cleaning must be performed by a qualified appliance repair technician.

***CAUTION: Never immerse Main Body in water or any other liquid.***

1. Unplug Mixer.
2. Eject mixer attachments from Mixer and wash attachments in warm water and a mild detergent. Rinse and dry thoroughly. The attachments may also be washed in the dishwasher.
3. Wipe exterior surface of Mixer with a soft, damp cloth or sponge.

## Storage

Unplug unit; store in its box or in a clean, dry place. Never store it while it is hot or still plugged in. Never wrap cord tightly around the appliance. Do not put any stress on the cord where it enters the unit, as it could cause the cord to fray and break.







## LIMITED ONE YEAR WARRANTY

**Warranty:** This product is warranted by Salton, Inc. to be free from defects in materials or workmanship for a period of (1) year from the original purchase date. This product warranty covers only the original consumer purchaser of the product.

**Warranty Coverage:** This warranty is void if the product has been damaged by accident in shipment, unreasonable use, misuse, neglect, improper service, commercial use, repairs by unauthorized personnel, normal wear and tear, improper assembly, installation or maintenance abuse or other causes not arising out of defects in materials or workmanship. This warranty is effective only if the product is purchased and operated in the USA, and does not extend to any units which have been used in violation of written instructions furnished with the product or to units which have been altered or modified or to damage to products or parts thereof which have had the serial number removed, altered, defaced or rendered illegible.

**Implied Warranties:** ANY IMPLIED WARRANTIES WHICH THE PURCHASER MAY HAVE ARE LIMITED IN DURATION TO ONE (1) YEAR FROM THE DATE OF PURCHASE. Some states do not allow limitations on how long an implied warranty lasts, so the above limitation may not apply to you.

**Warranty Performance:** During the above one-year warranty period, a product with a defect will be either repaired or replaced with a reconditioned comparable model (at our option) when the product is returned to the Repair Center, or the purchase price refunded. The repaired or replacement product will be in warranty for the balance of the one-year warranty period and an additional one-month period. No charge will be made for such repair or replacement.

**Service and Repair:** Should the appliance malfunction, you should first call toll-free 1 (800) 233-9054 between the hours of 9:00 am and 5:00 pm Central Standard Time and ask for CONSUMER SERVICE stating that you are a consumer with a problem. Please refer to model number MGHM10 when you call.

**In-Warranty Service (USA):** For an appliance covered under the warranty period, no charge is made for service or postage. Call for return authorization (1 800 233-9054).

**Out-of-Warranty Service:** A flat rate charge by model is made for out-of-warranty service. Include \$8.00 (U.S.) for return shipping and handling. We will notify you by mail of the amount of the charge for service and require you to pay in advance for the repair or replacement.

**For Products Purchased in the USA, but Used in Canada:** You may return the product insured, packaged with sufficient protection, and postage and insurance prepaid to the USA address listed below. Please note that all customs duty / brokerage fees, if any, must be paid by you and we will require you to pay the cost of customs duty / brokerage fees to us in advance of our performing any service.

**Risk During Shipment:** We cannot assume responsibility for loss or damage during incoming shipment. For your protection, carefully package the product for shipment and insure it with the carrier. Be sure to enclose the following items with your appliance: any accessories related to your problem, your full return address and daytime phone number, a note describing the problem you experienced, a copy of your sales receipt or other proof of purchase to determine warranty status. C.O.D. shipments cannot be accepted.

**To return the appliance, ship to:**

Attn: Repair Center  
Salton, Inc.  
708 South Missouri Street  
Macon, MO 63552

**To contact us, please write to, call, or email:**

Salton, Inc.  
P.O. Box 7366  
Columbia, MO 65205-7366  
1 800 233-9054  
Email: Salton@Saltonusa.com

**Limitation of Remedies:** No representative or person is authorized to assume for Salton, Inc. any other liability in connection with the sale of our products. There shall be no claims for defects or failure of performance or product failure under any theory of tort, contract or commercial law including, but not limited to negligence, gross negligence, strict liability, breach of warranty and breach of contract. Repair, replacement or refund shall be the sole remedy of the purchaser under this warranty, and **in no event shall Salton be liable for any incidental or consequential damages, losses or expenses.** Some states do not allow the exclusion or limitation of incidental or consequential damages, so the above limitation or exclusion may not apply to you.

**Legal Rights:** This warranty gives you specific legal rights, and you may also have other rights which vary from state to state.

For more information on Salton products: Visit our website: <http://www.eSalton.com>

© 2003 Salton, Inc.  
All Rights Reserved

P/N 61292  
Printed in China

# Michael Graves Hand Mixer

---



## Michael Graves

The highly acclaimed work of Michael Graves has restored a sense of humanity to modern architecture. Graves, one of the most noted architects of our time, has designed buildings for such clients as Disney,<sup>™</sup> including the company's corporate headquarters and the Walt Disney<sup>™</sup> World Swan and Dolphin Hotels. Gifted in design at every scale, Michael Graves has created products for the home that carry labels such as Alessi, FAO Schwarz, and Steuben. His work has been recognized with scores of awards. Most recently Michael Graves was selected for the 2001 American Institute of Architects Gold Medal award, the highest honor given by the AIA to an individual. In 1999, President Clinton presented Michael Graves with the National Medal of Arts.

The Michael Graves Design<sup>™</sup> Collection provides an inspired balance of form and function. Sensible and sublime, practical and whimsical, the objects envisioned by this world-renowned architect infuse our daily lives with joy.

A handwritten signature of Michael Graves. The signature is written in a cursive, flowing style. Below the signature is a thick, horizontal, slightly wavy line that serves as a decorative underline.