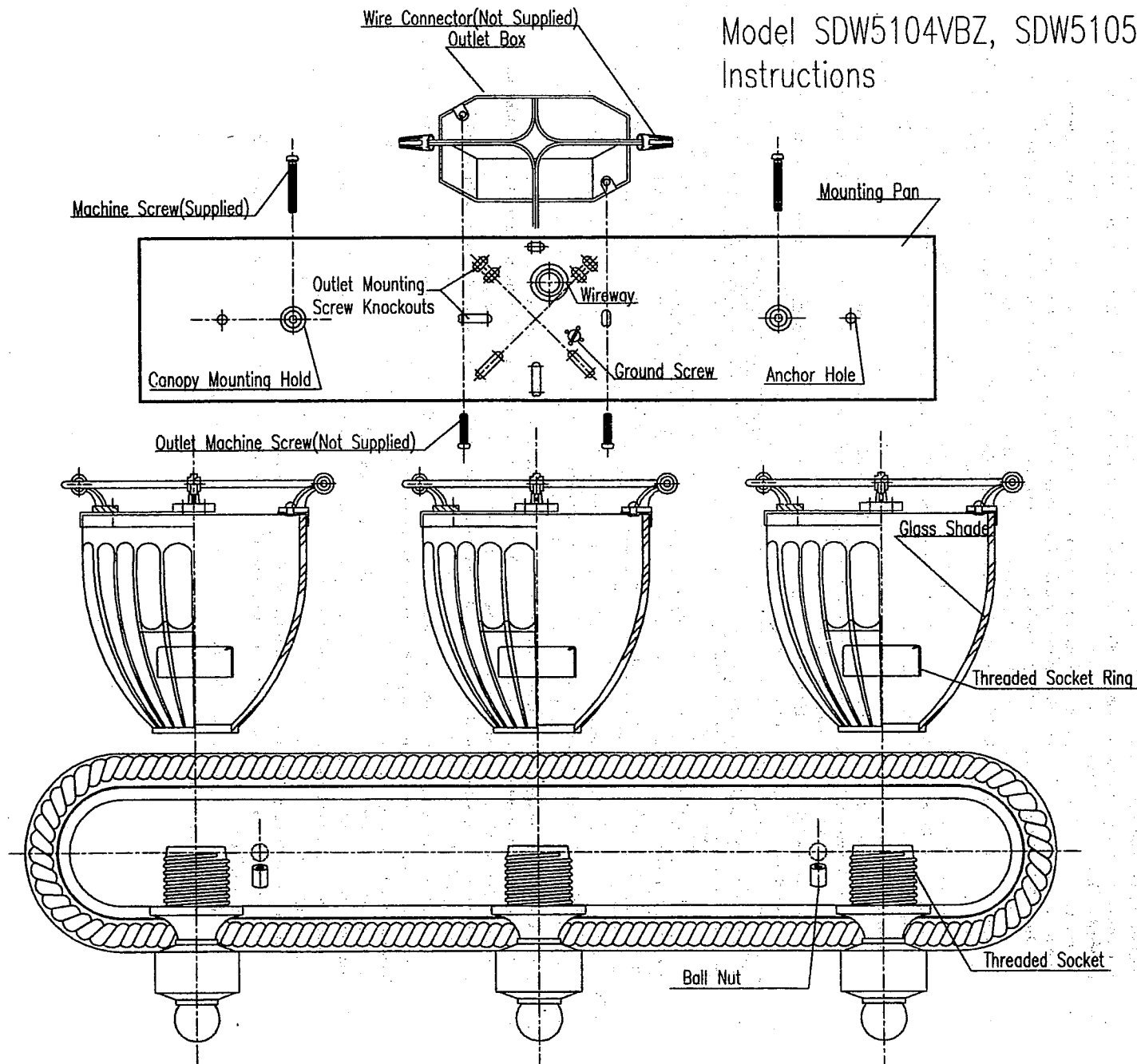


Model SDW5104VBZ, SDW5105VBZ
Instructions

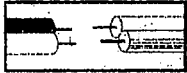


Model SDW5104VBZ, SDW5105VBZ Instructions

General assembly and installation instructions:

1. Read and understand all instructions and illustrations completely before proceeding with assembly and installation of this fixture.
2. If you have any doubts about how to install this lighting fixture, or if the fixture fails to operate completely, please contact a qualified licensed electrical contractor.
3. All parts must be used as indicated in these instructions. Do not substitute any parts, leave parts out, or use any parts that are worn out or broken. Failure to obey this instruction could invalidate the UL listing and/or CSA certification of this fixture.
4. **IMPORTANT:** Before you start, **NEVER** attempt any work without shutting off the electricity until the work is done.
 - a) Go to the main fuse, or circuit breaker, box in your home. Place the main power switch in the "OFF" position.
 - b) Unscrew the fuse(s), or switch "OFF" the circuit breaker switch(s), that control the power to the fixture or room that you are working on.
 - c) Place the wall switch in the "OFF" position. If the fixture to be replaced has a switch or pull chain, place those in the "OFF" position.
5. Remove old fixture from the outlet box, saving the wire connectors and machine screws that connect the mounting strap to the outlet box.
6. **Grounding Instructions:**
 - a) For installation in the United States: Wrap ground wire from outlet box around outlet box around green ground screw on mounting strap, no less than 2" from wire end. Tighten ground screw. If fixture is supplied with a ground wire, connect to outlet ground wire with the old fixture wire connector.
 - b) For installation in Canada: If fixture is supplied with ground wire, wrap ground wire around green grounding screw on mounting strap. Tighten ground screw.
7. Make wire connectors, with the old fixture wire connectors, following the reference chart listed below.

| Connect, Hot, Black or Red Outlet Supply Wire to: | Connect, Neutral, White Outlet Supply Wire to: |
|--|---|
| Black | White |
| *Parallel cord (round & smooth) | *Parallel Cord (square & ridged) |
| Clear, Brown, Gold or Black without Tracer (colored stripes) | Clear, Brown, Gold or Black with Tracer (colored stripes) |
| Insulated Wire (not green) with copper metal conductor | Insulated Wire (not green) with Silver metal conductor |



*Note: When parallel wire (SPT I & SPT II) is used. The neutral wire is square shaped and ridged and the hot wire will be round in shape and smooth. (See Illustration on left.)

8. If your wall contains an outlet box follow instructions from Step 9, otherwise follow instructions from Step 10.
9. At the center section of the mounting pan are oval knockout slots. Remove the set that match the position of the machine screw locations on the outlet box. Secure the mounting pan to the outlet box with the machine screws.
10. Anchor the mounting pan to the wall using the set of holes at each end, with wood screws, toggle bolts, plastic anchors, etc... (Not provided)
11. Place the fixture canopy over the threaded machine screws that project from the mounting pan and secure in place with threaded balls. Note: Be certain wires do not get pinched between mounting pan and canopy.
12. Remove threaded socket ring from socket.
13. Place glass shade over the threaded socket and secure with the threaded socket ring.
14. Insert bulb(s). Be sure to use light bulb(s) with wattage no greater than specified on this fixture. Always make sure that electrical current is turned off before changing bulbs.
15. For cleaning:
 - a) Always be certain that electric current is turned off before cleaning.
 - b) Use a soft moist cloth with mild non-abrasive soap to clean fixture. Never use glass cleaner on fixture, as it will damage the metal finish.
 - c) All glass shades may be washed in a towel-lined sink with warm water and mild soap. Do not wash shades in an automatic dishwasher.