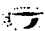
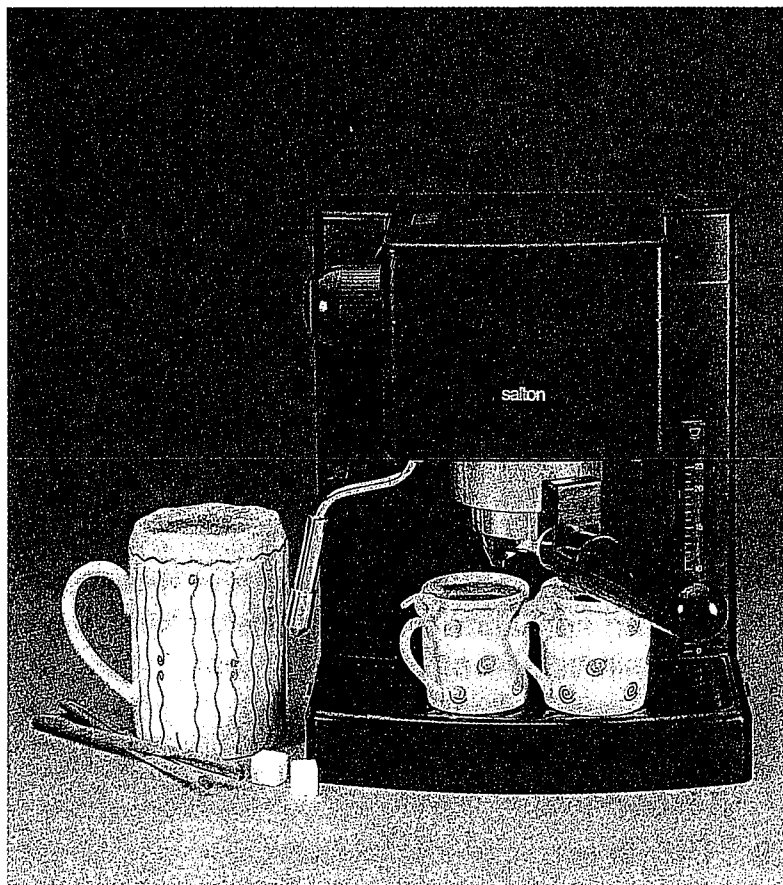


OWNER'S MANUAL

MODEL NO. PE-70

Cappuccino Dolce

PUMP ESPRESSO  CAPPUCCINO MAKER



salton[®]

Get a taste of the good life with Salton.

IMPORTANT SAFEGUARDS

When using electrical appliances, basic safety precautions should always be followed:

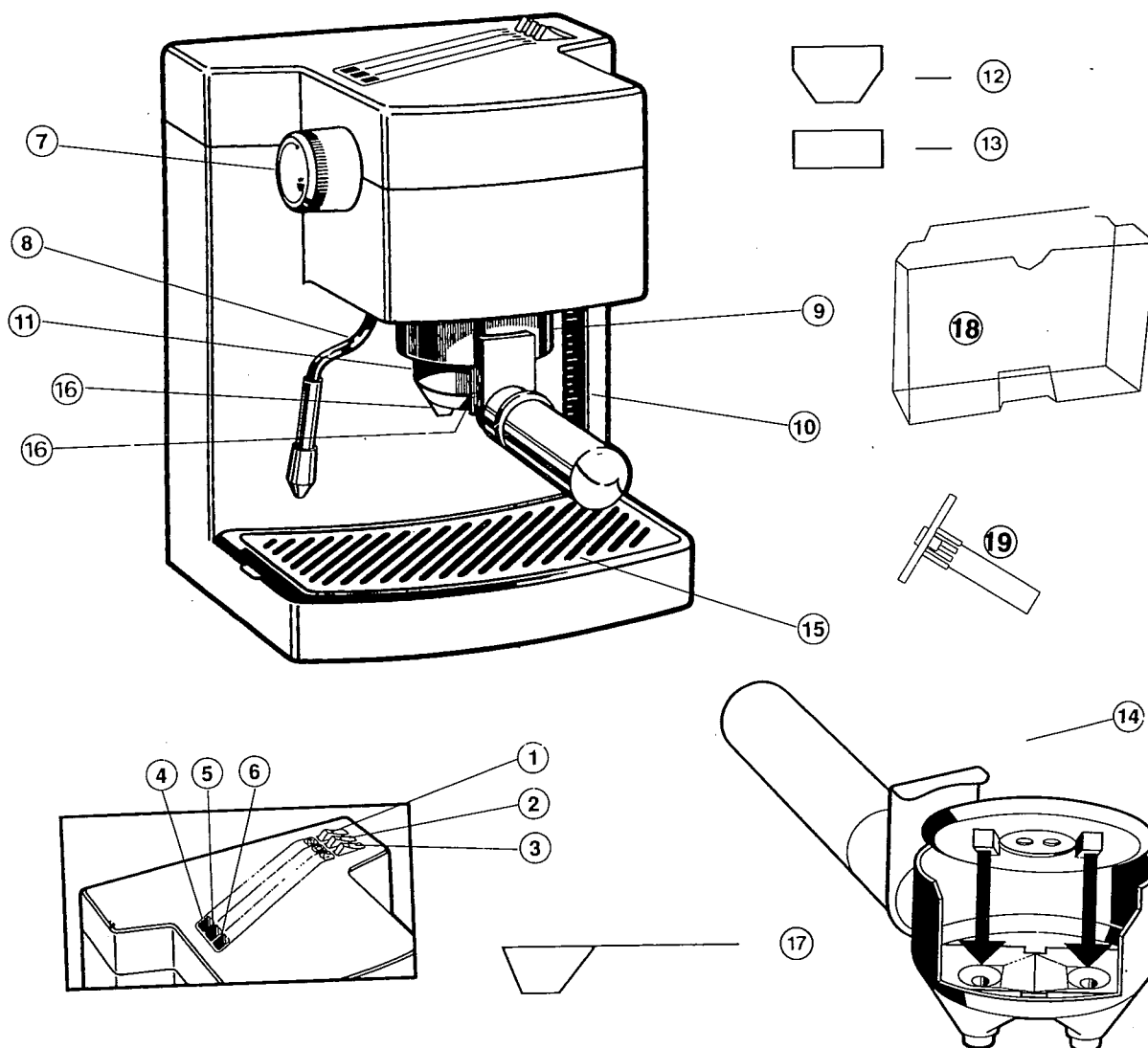
1. Read all instructions carefully.
2. Do not touch hot surfaces, use handles or knobs.
3. When in use, the appliance is under pressure and should never be left unattended.
4. To protect against fire, electric shock and personal injury, do not immerse cord, plug or appliance in water or other liquid.
5. Close supervision is necessary when any electrical appliance is used by or near children.
6. Unplug from outlet when not in use and before cleaning. Allow to cool before putting on or taking off parts and before cleaning.
7. Do not operate any appliance with a damaged cord or plug or after the appliance malfunctions or has been damaged in any manner. Return appliance to the Salton/MAXIM Service Center for examination, repair or adjustment.
8. The use of accessory attachments not recommended by Salton/MAXIM may result in fire, electric shock or personal injury.
9. Do not use outdoors.
10. Do not let cord hang over edge of table or counter or touch hot surfaces.
11. Do not place on or near a hot gas or electric burner, or in a heated oven.
12. Prior to connecting or disconnecting plug from wall outlet, turn all controls to **"OFF"**.
13. Do not use the appliance for other than intended use.

SAVE THESE INSTRUCTIONS

For Household Use Only.

Getting to Know Your Salton PE-70

Before using your Salton Cappuccino Dolce Pump Espresso for the first time, you must become familiar with all of the parts. Read all instructions and cautions carefully.



- | | |
|--|-------------------------------|
| 1. Main On/Off Switch | 10. Water level indicator |
| 2. Coffee (espresso) switch | 11. Filter holder with handle |
| 3. Steam switch | 12. One-cup filter |
| 4. On/Off pilot light | 13. Two-cup filter |
| 5. Coffee (espresso) indicator pilot light | 14. Crema disc |
| 6. Steam indicator pilot light | 15. Tray |
| 7. Steam knob for Super-steam nozzle | 16. Espresso flow holes |
| 8. Super-steam nozzle | 17. Measuring spoon |
| 9. Filter holder | 18. Removable water tank |
| | 19. Tamper |

PREPARATION FOR USE

Using Cappuccino Dolce the first time:

Before making espresso for the first time, operate the appliance once without making coffee following the instructions below. **NEVER USE THE APPLIANCE WITHOUT WATER.**

It is recommended to pass 8 - 10 cupfuls (an espresso cupful is a demi-tasse cup, which is 2 ounces) of water through the filter holder without putting coffee in the filter. A complete cleaning of the entire internal system will be achieved.

TROUBLE-SHOOTING

How to cure “vapor-lock” (or how to “burp” the machine):

This operation should be carried out whenever there is an air bubble locked in the internal channels of the espresso maker. This can occur in the following cases:

- When the espresso maker is used for the first time.
- If the coffee switch is activated and the tip of the suction tube in the water tank is above the water level.

If you forget to carry out this procedure you will notice vibrations and a straining noise from the appliance. The clearest visual sign of vapor lock is there is no change in the water tank level. Under normal conditions, the water tank level will immediately go down as water is pulled into the boiler of the machine. In this case, turn the main switch off immediately, as failure to do so may cause risk of damage to the appliance.

When vapor lock occurs, these are the steps to be taken:

a.) Make sure the tank is filled with water. Bear in mind that the end of the suction tube must be submerged in the water. Plug the machine in a 120 V AC outlet and fit the filter holder in place without coffee.

b.) Turn the On/Off switch (1) to the On position. **Place an empty cup or frothing pitcher under the super-steam nozzle.** The pilot light(4) will light up. Open the steam knob of the nozzle and press the coffee switch (2) on at the same time. This burps the machine and lets the air escape.

CAUTION: Water ejected from the nozzle or filter holder can be very hot, over 200 degrees Fahrenheit.

Once water has begun to come out through the super-steam nozzle (8) the steam knob (7) can be closed. Then the hot water will begin to come out through the filter holder. The coffee switch (2) can now be turned off. The coffee machine is ready for use.

OPERATION

Making Espresso Coffee

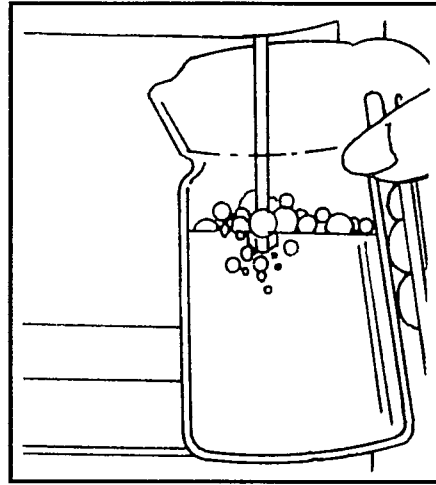
1. Fill the tank with water. Make sure that the end of the suction tube is immersed in the water.
2. Plug the appliance into a 120V AC wall outlet. Fit the crema disc (14) into the filter holder (11) with the teeth pointing down.
***Note:** The crema disc creates additional pressure on the espresso coffee, which forms a butterscotch colored foam on the top of the espresso. This is called Crema. A good Crema indicates that the grind of coffee, temperature of water and pressure of the machine are all working together well. For a less intense espresso, omit the crema disc. If you are going to use the filter for one demi-tasse cup (12) turn the crema disc (14) a quarter of the way so that it remains outside of the filter holder holes in a raised position. For two demi-tasse cups, fit the teeth of the disc into the filter holder holes.
3. If you use the filter for one cup of coffee, (12) measure out one level spoonful with the measuring spoon (17). If you use the filter for two cups of coffee (13), measure off two level spoonfuls with the measuring spoon (17). Always be sure to use fresh coffee ground specifically for a pump espresso maker. Any good store which sells whole beans can do this for you. This is a very fine grind.
4. Using the tamper (19) apply slight pressure and tamp down ground coffee to form a cake.
5. Now place the filter (12) or (13) filled with ground coffee over the Crema disc (14) in the filter holder. Fit the filter holder into the machine, locking the handle. Position 2 demi-tasse cups under the holes in the handle.
6. Make sure the filter holder is securely pulled over towards the right so that it does not drip. Turn the On/Off switch (1) to On position. When the pilot light (5) lights up, press the coffee switch (2) and espresso will begin to come out.
7. When the demi-tasse cup is 1/2 - 2/3 full, turn the coffee switch off. If this switch is not turned off the coffee will continue to flow out and the cup will overflow. **NOTE: If you overfill the filter basket with coffee, water may leak between the filter-holder and the coffee maker.**

Making Cappuccino

1. Cappuccino is a mixture of espresso coffee, hot milk and frothed milk foam. Fill a deep narrow pitcher halfway with fresh, cold, skim, 2% or whole milk and set next to the Cappuccino Dolce maker.
2. The Cappuccino Dolce machine comes equipped with a super-steam nozzle for perfectly frothed milk.
3. Follow steps 1 through 7 for making espresso.
4. Turn steam switch (3) to On position.

Wait until the steam pilot light (6) lights up. This operation will take less than 1 minute.

5. You'll need to purge any excess water in the steam pipe first so swing the steam nozzle outward and place an empty cup or frothing pitcher beneath it. Open the steam knob and release excess water until steam begins to come out. Then close the steam knob.
6. Swing the steam nozzle outward and hold the pitcher of cold, skim, 2% or whole milk underneath. Immerse the nozzle in the milk, turning the steam knob slowly forward to the maximum steam flow setting. While frothing, hold pitcher in a vertical position and gently move it in a circular motion.
7. After using the steam nozzle (8) to froth milk it is advisable to purge steam for two or three seconds into an empty cup to avoid clogging.



Making Hot Water, Tea

1. For making tea, broth, etc. Turn the On/Off switch (1) to On position. When the pilot light (5) lights up, place a heat resistant cup or bowl under the super-steam nozzle (8).
2. Open the steam knob slowly (7) and turn on the coffee switch.
3. When you have the amount of hot water desired, turn off the coffee switch (2) and close the steam knob.

USER MAINTENANCE INSTRUCTIONS (How To Clean Your PE-70)

1. Make sure power is switched off.
2. Unplug the coffee machine at the wall outlet. Allow to cool completely before cleaning.
3. Clean the water tank, the tray and the filter holder at regular intervals.
4. Do not use alcohol or solvents to clean the coffee machine. Use only a damp cloth.
5. Never immerse the appliance in water or any other liquid.
6. If the steam nozzle hole becomes clogged, use a needle to clean it.
7. To clean the Crema disc, rinse under warm tap water and wipe off excess ground coffee.
8. Wipe the outside of your PE-70 with a damp cloth.
9. The drip tray can be removed and washed in warm water.
10. This appliance is for Household Use Only.

Polarized plug

This appliance has a polarized plug (one blade is wider than the other), as a safety feature. This plug will fit in a polarized outlet only one way. If the plug does not fit fully in the outlet, reverse the plug. If it still does not fit, contact a qualified electrician. Do not attempt to defeat this safety feature.

Short cord instructions

A short power-supply cord (or detachable power-supply cord) is provided to reduce the risk resulting from becoming entangled in or tripping over a longer cord.

Longer detachable power-supply cords, or extension cords are available and may be used if care is exercised in their use.

If a longer detachable power-supply cord or extension cord is used, (1) the marked electrical rating of the extension cord should be at least as great as the electrical rating of the appliance, and (2) the cord should be arranged so that it will not drape over the counter top or table top where it can be pulled on by children or tripped over unintentionally.

Descaling

- The appliance should be decalcified every six months with a special product for coffee machines, or distilled vinegar.
- Pour into the water tank, the specified amount of water and cleaning product.
- Place cup under espresso flow holes (16) to catch emitted cleaning solution.
- Plug in the coffee machine. Turn on the switch (1) and when the pilot light (5) lights up, turn on the coffee switch (2) for 20 seconds.
- Unplug the coffee machine and leave the product in action for 15 minutes.
- Repeat this operation until the water tank is emptied.
- Plug in the coffee machine and press the coffee switch (2) until the water tank is again emptied.
- During this operation, press the steam switch (3).
- Allow steam to come out into a cup or frothing pitcher for 2 minutes.
- Repeat the above steps with cold water to rinse away residual vinegar. Repeat twice.

No other servicing should be attempted by the user.

LIMITED WARRANTY

Products distributed by Salton/MAXIM Housewares, Inc. are warranted for one year from date of purchase against defects in workmanship and material. During that period these defects will be repaired or the product will be replaced at Salton/MAXIM's option, without charge. This warranty covers normal consumer usage and does not cover damage which occurs in shipment or failure which results from alteration, accident, misuse, abuse, neglect, installation, commercial use or improper maintenance. This warranty is effective only if the product is purchased and operated in the USA, and does not extend to any units which have been used in violation of written instructions furnished by Salton/MAXIM Housewares, Inc., or to units which have been altered or modified without authorization of Salton/MAXIM Housewares, Inc., or to damage to products or parts thereof which have had the serial number removed, altered, defaced or rendered illegible. This warranty does not cover damage which results from unauthorized repairs.

Service and Repair

DO NOT attempt to repair your SALTON PE-70 Cappuccino Dolce. Attempts to repair this appliance yourself may render it dangerous to use. Should the appliance malfunction, you should first call toll free 1-800-233-9054 between the hours of 9:00 am and 5:00 pm Central Standard Time and ask for CONSUMER CUSTOMER SERVICE stating that you are a consumer with a problem. If the problem cannot be resolved, you will be asked to return the appliance to the factory for repair. Under no circumstances should you attempt to open the housing and repair the appliance. Should you do this, your warranty will be voided.

To Return for Service

1. Securely package and return the product, PREPAID to:
Salton/MAXIM Housewares, Inc., Repair Department
550 Business Center Drive, Mt. Prospect, IL 60056
 2. Be sure to enclose:
 - a. Your name, address and phone number.
 - b. The date of purchase (or receipt as a gift).
 - c. An explanation of the malfunction or reason for return.
 - d. Eight dollars (\$8.00) Check or Money Order payable to Salton/MAXIM Housewares, Inc. for return postage and handling.
 - e. To insure prompt "In-Warranty" service, be sure to include proof of date of purchase.
- We recommend you take the necessary precaution of insuring the parcel.
3. **Toll Free Number:** 1-800-233-9054



salton[®]