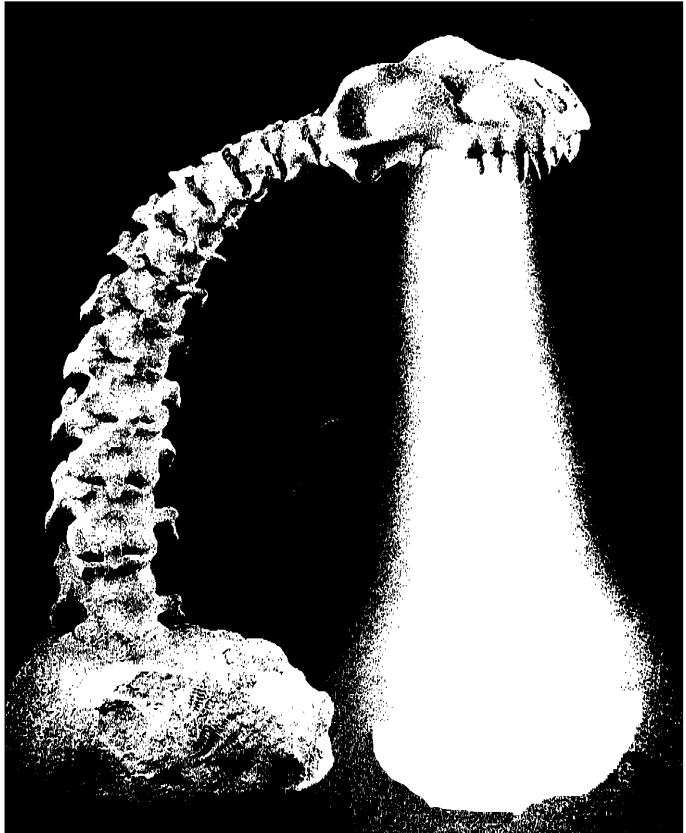


OWNER'S MANUAL

LAMP1



Lampasaurus



Important Safeguards

Lighted Lamp is HOT!

To reduce the risk of FIRE, BURNS, and EYE DAMAGE:

1. Disconnect and allow to cool for at least 5 minutes before replacing bulb.
2. Bulb gets HOT quickly! Be sure the power is off when replacing the bulb.
3. Do not touch hot lens, guard, or enclosure.
4. Do not direct light at persons.
5. Do not look directly at lighted bulb.
6. Keep Lamp away from curtains, draperies, and similar materials.
7. Use only with a 40-watt or smaller bulb.
8. Do not touch the bulb at any time. Use a soft cloth. Oil from skin may damage bulb integrity.

THIS APPLIANCE IS FOR HOUSEHOLD USE ONLY
SAVE THESE INSTRUCTIONS

Polarized Plug

This appliance has a polarized plug (one blade is wider than the other). To reduce the risk of electric shock, this plug will fit into a polarized outlet only one way. If the plug does not fit fully into the outlet, reverse the plug. If it still does not fit, contact a qualified electrician. Do not attempt to modify the plug in any way.

Short Cord Instructions

A short power-supply cord is provided to reduce the risk resulting from becoming entangled in or tripping over a longer cord.

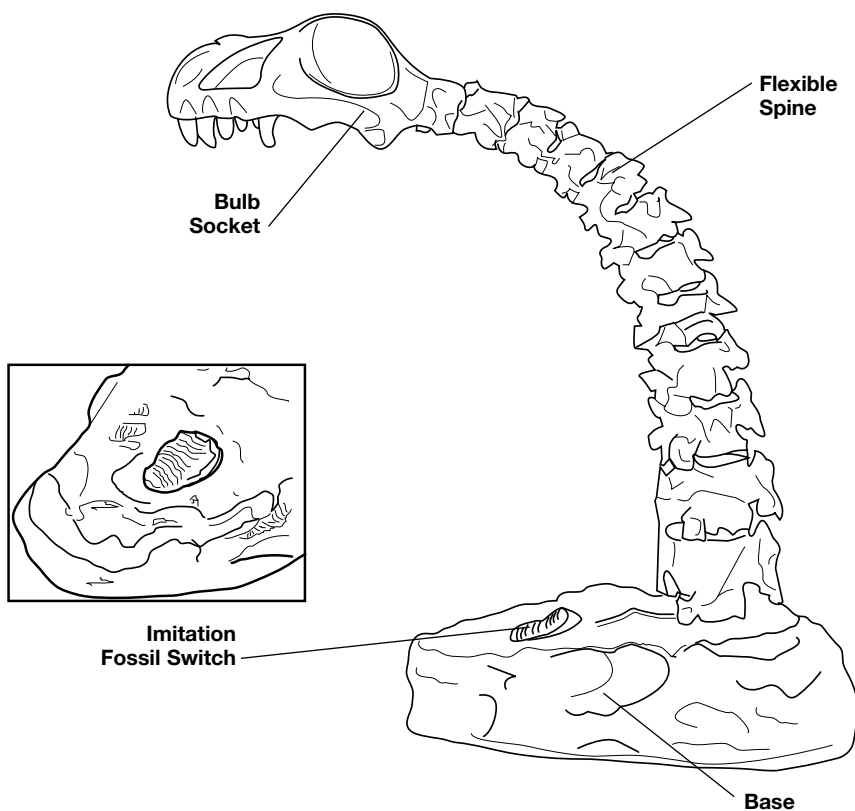
Longer extension cords are available and may be used if care is exercised in their use.

If an extension cord is used, (1) the marked electrical rating of the extension cord should be at least as great as the electrical rating of the appliance, and (2) the longer cord should be arranged so that it will not drape over the counter top or table top where it can be pulled on by children or tripped over unintentionally.

Getting To Know Your Lampasaurus

Before attempting to use the Lampasaurus, you should become familiar with all of the parts. Read all of the instructions and safeguards carefully.

Identify all parts of the Lampasaurus according to the drawing below so that you have no doubts when reading the instructions that follow.



Instructions For Use



THIS UNIT USES A
40W MAX. CANDELABRA BULB
(NOT INCLUDED)

1. Place the Lamp on a flat, level surface and screw the bulb (not included) into the Bulb Socket in a clockwise direction until it is secure.
2. Plug cord into a 120V electrical outlet.
3. Press the Imitation Fossil Switch on the Base to turn the Lamp On/Off.
4. The Lamp has a Flexible Spine and can also swivel in any direction.

User Maintenance Instructions

The Lamp requires little maintenance and contains no user serviceable parts. Do not try to repair it yourself. Refer it to qualified personnel if servicing is needed.

Unplug the unit and allow it to cool before cleaning. Clean the Lamp surfaces only with a soft cloth. NEVER ALLOW WATER OR ANY OTHER LIQUIDS TO COME INTO CONTACT WITH THE UNIT. Do not use any chemicals or abrasive cleaners.

IMPORTANT NOTICE

*If any parts are missing or defective,
DO NOT return this product.*

Please call our Consumer Service Department for assistance.

800-233-9054 Monday - Friday 8am - 5pm CST

Thank You

ONE-YEAR LIMITED WARRANTY

This Salton, Inc. product warranty extends to the original consumer purchaser of the product.

Warranty Duration: This product is warranted to the original consumer purchaser for a period of one (1) year from the original purchase date.

Warranty Coverage: This product is warranted against defective materials or workmanship. This warranty is void if the product has been damaged by accident, in shipment, unreasonable use, misuse, neglect, improper service, commercial use, repairs by unauthorized personnel or other causes not arising out of defects in materials or workmanship. This warranty is effective only if the product is purchased and operated in the USA, and does not extend to any units which have been used in violation of written instructions furnished by Salton, Inc., or to units which have been altered or modified or to damage to products or parts thereof which have had the serial number removed, altered, defaced or rendered illegible.

Warranty Disclaimers: This warranty is in lieu of all warranties expressed or implied and no representative or person is authorized to assume for Salton, Inc. any other liability in connection with the sale of our products. There shall be no claims for defects or failure of performance or product failure under any theory of tort, contract or commercial law including, but not limited to, negligence, gross negligence, strict liability, breach of warranty and breach of contract. Some states do not allow the exclusion or limitations of implied warranties or consequential damages, so the above limitations or exclusions may not apply to you.

Salton, Inc. is not responsible or liable for indirect, special or consequential damages arising out of or in connections with the use or performance of the product or other damages with respect to loss of property, or loss of revenues or profit.

Legal Remedies: This warranty gives you specific legal rights, and you may also have other rights that vary from state to state.

Warranty Performance: During the above one-year warranty period, a product with a defect will be either repaired or replaced with a reconditioned comparable unit (at Salton, Inc.'s option) when the product is returned to the Salton, Inc. facility listed below. The repaired or replacement product will be in warranty for the balance of the one-year warranty period and an additional one-month period. No charge will be made for such repair or replacement.

Service and Repair

Should the appliance malfunction, you should first call toll-free 1-800-233-9054 **between the hours of 8:00 am and 5:00 pm Central Standard Time** and ask for **CONSUMER SERVICE**. Please refer to Model LAMP1 when you call.

In-Warranty Service for a product covered under the warranty period, no charge is made for service and return postage. Please return the product insured, packaged with sufficient protection, and postage and insurance prepaid to the address listed below. **Customs duty/brokerage fee (outside USA), if any, must be paid by the consumer.**

Out-of-Warranty Service: There will be charges rendered for repairs made to the product after the expiration of the aforesaid one (1) year warranty period, after purchaser is advised appropriately. Include \$10.00 (U.S.) for return shipping and handling.

Salton, Inc. cannot assume responsibility for loss or damage during incoming shipment. For your protection, carefully package the product for shipment and insure it with the carrier. Be sure to enclose the following items with your unit: any accessories related to your problem; your full return address and daytime phone number; a note describing the problem you experienced; a copy of your sales receipt or other proof of purchase to determine warranty status. C.O.D. shipments cannot be accepted.

Return the appliance to: ATTN: Repair Department, Salton, Inc.
708 South Missouri St. Macon, MO 63552

For more information on Salton, Inc. products, visit our website:
<http://www.salton-maxim.com>, or email us at: salton@saltonusa.com