



**Westinghouse**



**WST1200 Steamxtreme™ Multipurpose  
Hand Held Steamer**

**You can be sure...if it's Westinghouse™**

# IMPORTANT SAFEGUARDS

When using an electrical appliance, basic precautions should always be followed, including the following:

1. Read all instructions.
2. To reduce the risk of contact with hot water emitting from Vapor Jet/Nozzle, check appliance before each use by holding it away from body and operating the Steam Trigger.
3. Use appliance only for its intended use. Do not use outdoors.
4. To reduce the risk of electric shock, do not immerse the appliance in water or other liquids.
5. To reduce risk of damage to the electric plug and cord, pull the plug rather than cord to disconnect. Do not use cord as a handle or pull cord around sharp edges or corners. Keep cord away from heated surfaces. Loop cord loosely around appliance when storing.
6. Always disconnect from electrical outlet when filling with water or emptying, and when not in use.
7. Do not operate with a damaged cord, or if the appliance has been dropped or damaged. To reduce the risk of electric shock, do not disassemble or attempt to repair the appliance. Take it to a qualified service person for examination and repair. Incorrect re-assembly or repair could cause risk of fire, electric shock, or injury to persons when the appliance is used. Use only manufacturer's recommended accessories.
8. Do not allow to be used as a toy. Close attention is necessary when used near children, pets and plants. Do not leave the appliance when plugged in. Unplug the electrical cord when not in use and before servicing.
9. Burns could occur from touching hot metal parts, hot water, or steam. Use care when you turn the appliance upside down -- there may be hot water in the Water Tank.
10. Do not put any object into openings. Do not use with any opening blocked.
11. Never discharge steam towards people, animals, plants, and equipment with electrical components.
12. Never put descaling, aromatic or detergent products into the Water Tank, as this may damage it or make it unsafe for use.
13. This appliance is not for space heating purposes.

**SAVE THESE INSTRUCTIONS**  
**FOR HOUSEHOLD USE ONLY**

# Westinghouse Steamxtreme™ Hand Held Steamer

## ACCESSORY/PARTS & ATTACHMENTS

Product may vary slightly from illustration

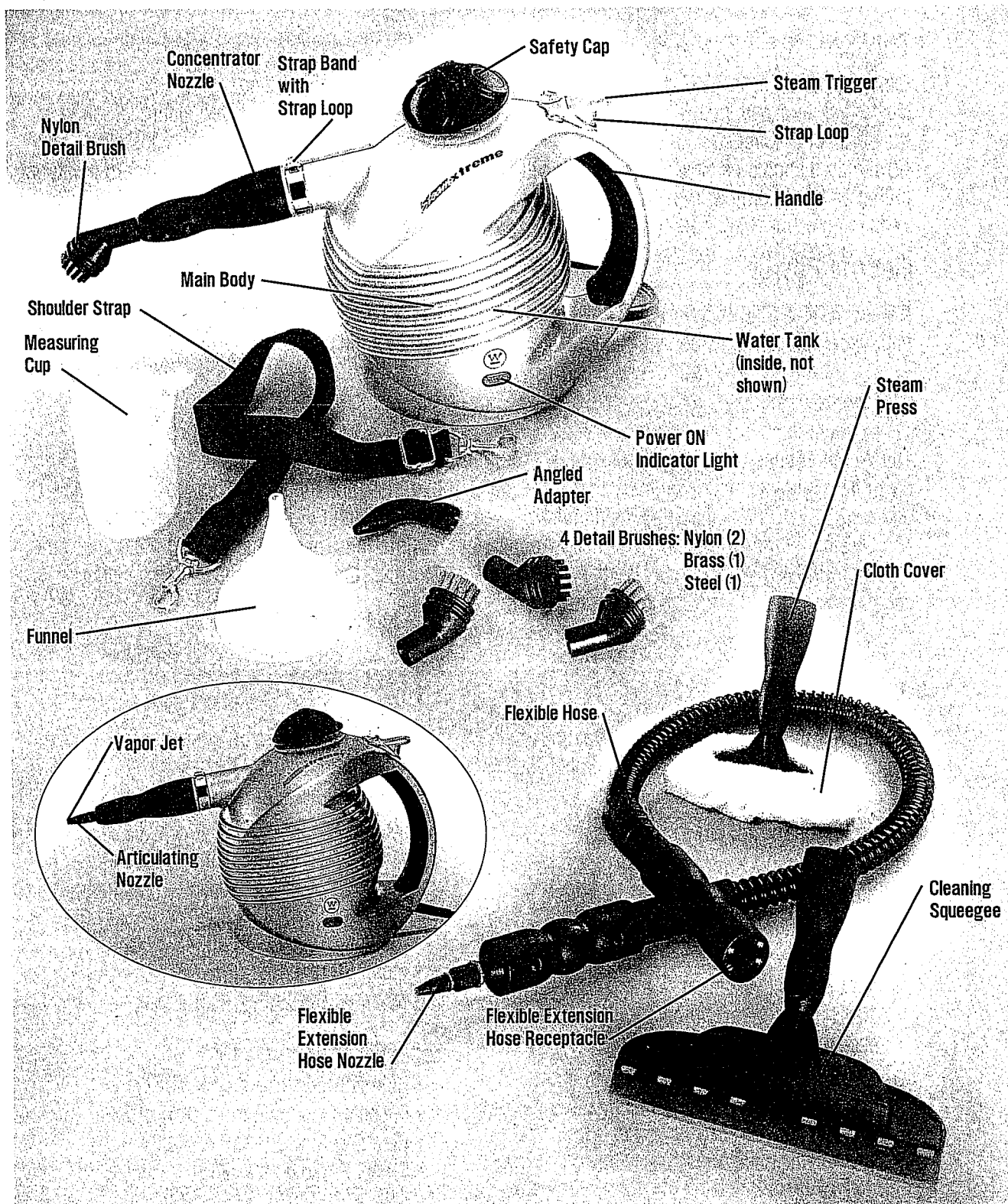


Figure 1

## Polarized Plug

This appliance has a polarized plug (one blade is wider than the other.) To reduce the risk of electric shock, this plug is intended to fit into a polarized outlet only one way. If the plug does not fit fully in the outlet, reverse the plug. If it still does not fit, contact a qualified electrician. Do not attempt to modify the plug in any way.

## The Use Of An Extension Cord

Extension cords are available and may be used if care is exercised in their use. If a longer detachable power-supply cord or extension cord is used, (1) the marked electrical rating of the cord set or extension cord should be at least as great as the electrical rating of the appliance, and (2) the cord should be arranged so that it will not drape over the countertop or tabletop where it can be pulled on by children or tripped over unintentionally.

## Electric Power

If the electrical circuit is overloaded with other appliances, your appliance may not operate properly. It should be operated on a separate electrical circuit from other appliances.

The Westinghouse WST1200 Steamxtreme™ Multipurpose Hand Held Steamer is designed to thoroughly clean hard surfaces and upholstery that will withstand high heat and moisture. This Steamer deodorizes and sanitizes as it steams away mold, mildew, grease and household dirt without chemicals or fumes. The Steamer is ideal for cleaning kitchens, appliances, countertops, ovens, bathrooms, tile and grout, chrome, windows and mirrors. Use the Steamxtreme™ Steamer to deodorize and freshen bedding, carpets, fabric, even clean hanging draperies and clothes.

# OPERATING INSTRUCTIONS

In order to get the most out of your Westinghouse WST1200 Hand Held Steamer, we suggest you read the easy step-by-step instructions thoroughly before starting to steam clean.

## ASSEMBLING YOUR STEAMER

1. Remove the Westinghouse WST1200 Hand Held Steamer from its box.
2. Carefully remove all plastic packing materials from the Steamer. Check to make sure you remove all Accessories / Parts and Cleaning Attachments before throwing out the packing materials.
3. A Mesh Storage Bag is included to store Accessories, Parts and Attachments when not in use.

## ACCESSORY / PARTS LIST

- Measuring Cup (P/N 40232)
- Funnel (P/N 40231)
- Shoulder Strap (P/N 40242)
- Cleaning Towel (P/N 40243)
- Mesh Storage Bag (P/N 40244)
- Zippered Duffle Bag (P/N 40245)

## CLEANING ATTACHMENTS

- Concentrator Nozzle (P/N 40237)
- Flexible Extension Hose (P/N 40233)
- Cleaning Squeegee (P/N 40234)
- Steam Press (P/N 40235) with Cloth Cover (P/N 40236)
- Small Detail Brushes (4)
  - (2) Nylon (P/N 40239);
  - (1) Brass (P/N 40240); (1) Steel (P/N 40241)
- Angled Adapter (P/N 40238)

## Before Using Your Westinghouse Steamxtreme™ Multipurpose Hand Held Steamer

Before cleaning, it is recommended that you test the area to be cleaned by steaming a small, isolated part of the surface in question. Be sure to check the manufacturer's instructions on the object you want to clean.

**WARNING:** Do not use on soft plastics, unsealed wood, or cold glass.

**WARNING:** On surfaces that have either been treated with wax on some no wax floors, the sheen may be removed by the heat and steam action. Do not use on unsealed wood. This could cause the woodgrain to rise.

### Attaching the Shoulder Strap

For ease of operation and especially for use with the Flexible Extension Hose, the Shoulder Strap makes using the Steamxtreme™ Steamer easy work. Simply attach the clips located on both ends of the Shoulder Strap to the Shoulder Strap Loops on the top of the Main Body of the Steamer.

### Filling/Refilling The Steamer

**WARNING:** After every use, press the Steam Trigger until all pressure has been released -- no hissing sound can be heard and steam is no longer emitted from the Nozzle.

**WARNING:** REMOVE SAFETY CAP ONLY AFTER ALL STEAM HAS BEEN FULLY EXPENDED.

1. Make sure the Steamer is unplugged.
2. Wait approximately 4 minutes after releasing the pressure before carefully unscrewing the Safety Cap.
3. Turn the Safety Cap slowly a half turn and wait for any hissing noise created by residual steam to stop.
4. Unscrew the Safety Cap completely and set aside. Allow to cool if necessary. Turn appliance over and completely empty the Water Tank.
5. Fill the Measuring Cup (included) with water to the marked water line. Use the Funnel (included) to pour 2 Measuring Cups of clean water through the Fill Spout into the Water Tank. (See Figure 2.)

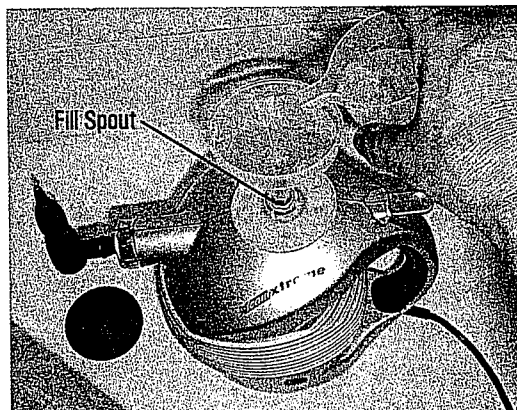


Figure 2

**WARNING:** NEVER add more than 2 measuring cups of water (10.8 oz. maximum). DO NOT OVERFILL.

**WARNING:** Never put descaling, aromatic, alcoholic or detergent products into the Water Tank, as this may cause damage to the unit and/or make the Steamer unsafe for use. USE WATER ONLY.

6. Replace the Safety Cap; turn clockwise, grip the Cap firmly and press down to completely tighten. (See Figure 3.)

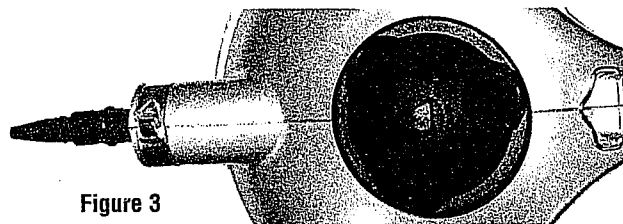


Figure 3

7. Plug the Steamer into a 120V AC electrical outlet. The Power ON Indicator Light will illuminate.
8. Allow approximately 5 to 7 minutes for the steam to reach its working temperature and pressure. When the Steamer is heated and ready to use, the Power ON Indicator Light will turn off. The Power ON Indicator Light will cycle on and off throughout use as the Steamer maintains proper temperature and pressure.

**CAUTION:** DO NOT LEAVE THE APPLIANCE UNATTENDED DURING THIS TIME!

9. Grip the Steamer firmly by the Handle as you depress the Steam Trigger.

**NOTE:** FOR INTENSE CLEANING ACTION, IT IS BEST TO USE SHORT BURSTS OF POWER.

**CAUTION:** Metal tips on nozzles will get hot during use. Do not touch hot surfaces. Allow the attachments to cool down before replacing them while the appliance is being used.

**CAUTION:** Never discharge steam towards people, animals, plants, or equipment containing electrical components.

# CLEANING ATTACHMENTS

## Assembly Instructions: Concentrator Nozzle, Flexible Extension Hose, Cleaning Squeegee and Steam Press

1. Line up the top of the Hand Steamer (—) with the ► on any of the Attachments: Concentrator Nozzle, Flexible Extension Hose, Cleaning Squeegee or Steam Press.

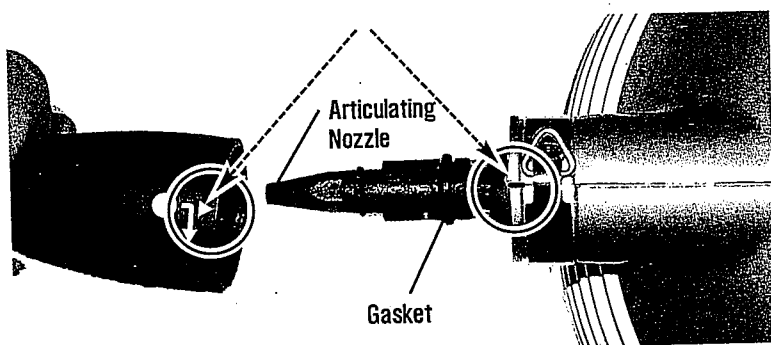


Figure 4

Line up the top of the Hand Steamer (—) with the ► on the Attachment

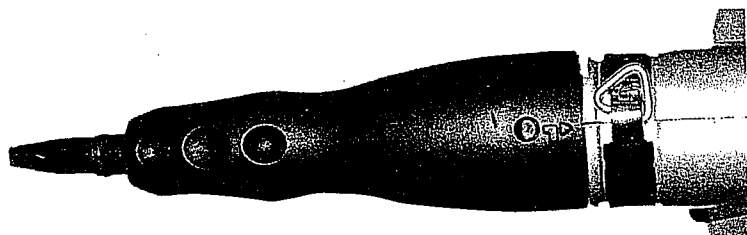


Figure 5

Top View; Concentrator Nozzle first placed onto Articulating Nozzle

2. Push the Attachment onto the Articulating Nozzle until it covers the round Gasket. It should fit snugly up against the Main Body of the Steamer.
3. Grasp the Attachment firmly and turn clockwise (in the direction of the arrow) until the ► on the Attachment is aligned with the double mark (==) on the appliance.

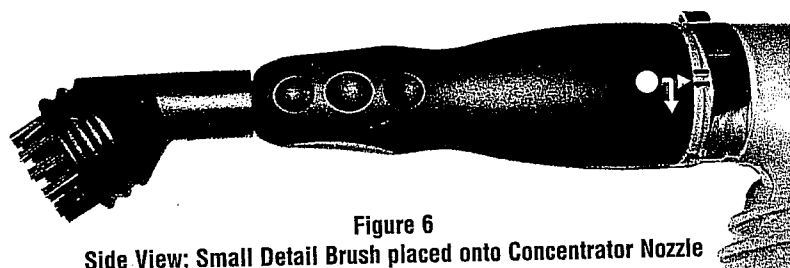


Figure 6

Side View; Small Detail Brush placed onto Concentrator Nozzle

4. With the Attachment locked securely onto the Steamer Nozzle, you are ready to begin steaming.

## Concentrator Nozzle or Flexible Extension Hose

1. The Concentrator Nozzle or Flexible Extension Hose can be attached to the Steamer's Articulating Nozzle. These Attachments can then be used alone or combined with any of the Brushes, the Angled Adapter, the Cleaning Squeegee or with the Steam Press.
2. Following assembly instructions outlined previously, add and lock the Concentrator Nozzle into place. Use to clean edging, window sills, stone ledges, tile, mantles.
3. To extend your cleaning reach by 40 inches, add the Flexible Extension Hose to the Steamer. Following assembly instructions outlined previously, add and lock the Flexible Extension Hose into place.
4. To steam clean, grasp the end of the Hose firmly with one hand and use the other hand to depress the Steam Trigger.
5. Using the Shoulder Strap will help to maneuver when using the Extension Hose.

## Cleaning Squeegee

### Cleaning Windows, Glass Surfaces and Mirrors

**CAUTION:** When cleaning windows, always avoid any sudden changes or extreme differences in temperatures to prevent breakage or cracks.

**CAUTION:** NEVER USE THE WINDOW CLEANING TOOL ON COLD GLASS AS IT MAY CAUSE THE GLASS TO SHATTER OR BREAK.

1. Perfect for use on windows, glass doors, tiled walls, and mirrors.
2. Attach the Cleaning Squeegee to either the Steamer's Articulating Nozzle or the Flexible Extension Hose Nozzle following the Assembly Instructions previously outlined.
3. Using lateral movements, squeegee off the water and residue, working from the top to the bottom of the surface.

## Steam Press

**CAUTION:** Always determine the color-fastness of any fabric before steaming. To do this, take a clean, moist, warm towel and gently rub a small area of the fabric (hidden and out-of-the-way). If the color comes off on the towel, **DO NOT STEAM**. Dry cleaning may be necessary.

1. Steam press clothes on their hangers; draperies, shades, and all types of window coverings.
2. To steam upholstery and sturdy fabrics, place the Cloth Cover over the Steam Press. (See Figure 7.)
3. Use fast, light strokes. Avoid wetting the fabric. Use either circular movements or lateral movements to get total coverage of the surface fibers.
4. For stubborn stains, never work on any area for more than 1 minute at a time. Wait at least 5 minutes for the area to dry and then repeat steaming. Finish with a soft brush, brushing in 1 direction to give a uniform appearance.



**Figure 7**  
Slip the Cloth Cover over the Steam Press to steam draperies or upholstery; deodorize and freshen bedding, carpets, fabric, wall hangings/fixtures, and hanging clothes. Even stuffed toys!

## Small Detail Brushes and Angled Adapter

There are 4 Small Detail Brushes and 1 Angled Adapter included with your Hand Held Steamer.

1. These Brushes or the Angled Adapter can be added to the Articulating Nozzle, the Concentrator Nozzle or to the Flexible Extension Hose Nozzle, depending on the specific requirements of the cleaning job.
2. There are 6 possible angles that the Brushes or the Angled Adapter can be attached to the Nozzle. Angle the appropriate Attachment as you place it onto the Nozzle.
3. Push the Attachment firmly onto the Nozzle. Check to make sure that it is locked securely into position.

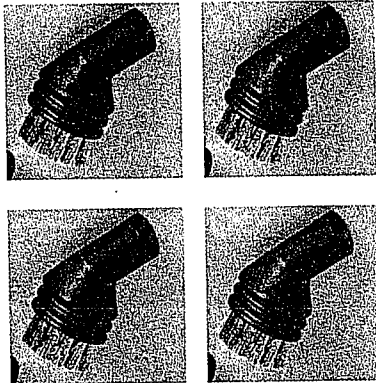


Figure 8

4 Detail Brushes:  
(2) Nylon Brushes  
(1) Brass Brush  
(1) Steel Brush and Angled Adapter

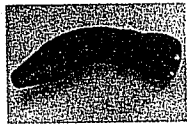


Figure 9



Figure 10

## Cleaning Bathroom Areas

### Soap Scum

Soap scum dissolves almost immediately with steaming. Rinse cleaned area with water and use the Cleaning Cloth (included) to wipe the area dry.

**NOTE:** Use Small Detail Brush to break up dried-on residue or wipe first with lemon vinegar or seltzer water to soften the minerals before cleaning. (See Figure 9.)

Apply steam to the surface and wipe dry. Repeat until surface is clean.

### General Cleaning

The Westinghouse WST1200 Steamxtreme™ Hand Steamer is ideal for cleaning the bathtub or shower areas: chrome fixtures, sinks, grout, shower door tracks, and heavily soiled or mineral deposited areas. Use the Small Detail Brushes to remove dirt; use the Angled Adapter to get into hard-to-reach areas. (See Figure 10.)

Use the Cleaning Cloth (included) to wipe up excess moisture and residue.



# USER MAINTENANCE INSTRUCTIONS

This appliance requires little maintenance. It contains no user serviceable parts. Do not try to repair it yourself. Any servicing requiring disassembly, other than cleaning, must be performed by a qualified appliance repair technician.

## Rinsing the Water Tank

**CAUTION:** This appliance must be unplugged from the electrical outlet and allowed to cool down before all cleaning and maintenance tasks are performed.

**CAUTION: NEVER IMMERSE STEAMER IN WATER OR ANY OTHER LIQUID.**

1. A periodic rinse (after every 10 to 15 uses) of your Steamer Water Tank will remove mineral deposits. Unplug the Steamer from the electrical outlet and allow to cool completely before cleaning.

**WARNING: BEFORE CLEANING OR STORAGE,** press the Steam Trigger until all pressure has been released -- no hissing sound can be heard and steam is no longer emitted from the Nozzle.

**WARNING: REMOVE SAFETY CAP ONLY AFTER ALL STEAM HAS BEEN FULLY EXPENDED.**

2. If the Steamer was recently used, wait for approximately 4 minutes after releasing the pressure before carefully unscrewing the Safety Cap.
3. Turn the Safety Cap slowly a half turn and wait for any hissing noise created by residual steam to stop.
4. Unscrew the Safety Cap completely and set aside. Fill the Water Tank with warm water; replace Safety Cap. Shake vigorously; remove Safety Cap; turn appliance over and completely empty the Water Tank of mineral and scale deposits.

**WARNING: DO NOT USE VINEGAR, OR OTHER DESCALING SUBSTANCES IN YOUR STEAMER. USE WATER ONLY.**

## Cleaning the Steam Nozzles

1. If you notice a marked decrease in steam output, it may be necessary to remove mineral deposit build-up from either the Articulating, Concentrator or Flexible Extension Hose Nozzles. Proper Nozzle cleaning and Nozzle maintenance will ensure the highest operating performance.
2. Using a small wire such as a straightened paper clip, carefully insert into the Articulating Nozzle and move in and out to remove any mineral deposits.
3. Add water to Water Tank and prepare to operate Steamer. If steam performance does not improve, repeat steps 1 and 2.
4. If you are using either the Concentrator or the Flexible Extension Hose, use a small wire such as a straightened paper clip, and follow the instructions described above to clean each Nozzle.

## Exterior Cleaning

**CAUTION: NEVER IMMERSE STEAMER IN WATER OR ANY OTHER LIQUID.**

Wash and rinse the Main Body in warm, soapy water using a sponge or a cloth. Do not use steel wool, course scouring pads or harsh abrasives on any surface as they may damage the exterior finish. Wipe exterior with a soft, damp cloth and be sure to dry thoroughly.

## Storage

Unplug Steamer, allow to cool, and clean before storing.

Store Accessory/Parts & Attachments in the Mesh Storage Bag included.

Store the Steamer in its box in a clean, dry place. Never store the Steamer while it is hot or still plugged in. Never wrap cord tightly around the appliance. Do not put any stress on the cord where it enters the unit, as it could cause the cord to fray and break.

# QUESTIONS AND ANSWERS

## Steamer won't start.

- Check plug. Push plug securely into outlet. Verify Power ON Indicator Light is illuminated.
- Try another outlet.
- Check circuit breaker.
- Check to make sure that the Water Tank has ample water.

## Appliance won't make steam.

- Check to make sure that the Water Tank has ample water to produce steam.
- Allow more time for water to heat.

## Appliance spits water out of Nozzle.

- Too much water in tank. Do not overfill.
- Steamer has been used in an upside-down position. **ALWAYS USE STEAMER IN AN UPRIGHT POSITION.**
- Steamer is not fully preheated. Allow more time for water to heat.

## Water boils out of Fill Spout when adding water.

- Water Tank is too hot. Allow more time for cooling.
- Add water slowly.
- Use special funnel provided.

## Accessories will not stay on the Steamer.

- Before using your Steamer, make sure Accessories are tight and locked into position. Review this Owner's Manual for complete assembly instructions.

## How can I order additional accessories for my Westinghouse WST1200 Steamxtreme™ Hand Held Steamer?

- Just call our toll free number: 1-800-616-8689 and refer to the ACCESSORY/PARTS LIST in this manual.

# WST1200 Steamxtreme™ Hand Held Steamer

## ACCESSORY / PARTS LIST

Replacement parts are available, and may be purchased through our Consumer Service Department by calling 1-800-616-8689, Monday through Friday, 9am - 5pm Central Time, You can pay for these parts by using either Visa, Mastercard, Discover, or American Express. Please be ready to give the part number(s) when you call.

Or log into our website to order at: [www.eSalton.com](http://www.eSalton.com)

<u>PART #</u>	<u>DESCRIPTION</u>
40230	Safety Cap
40231	Funnel
40232	Measuring Cup
40233	Flexible Extension Hose
40234	Cleaning Squeegee
40235	Steam Press
40236	Cloth Cover
40237	Concentrator Nozzle
40238	Angled Adapter
	Detail Brushes
40239	(1) Nylon
40240	(1) Brass
40241	(1) Steel
40242	Shoulder Strap
40243	Cleaning Towel
40244	Mesh Storage Bag
40245	Zippered Duffle Bag

## LIMITED WARRANTY

**One Year Warranty:** This Westinghouse Steamer is warranted to be free from defects in materials and workmanship for a period of (1) year from the original purchase date.

**Original Purchaser:** This warranty covers only the original consumer purchaser for as long as he or she owns the Westinghouse Steamer.

**Warranty Coverage:** This warranty is valid only if the purchaser uses the Steamer in accordance with Westinghouse's Operating Instructions. This warranty is void if the Westinghouse Steamer is used for commercial or rental use. This warranty does not apply (i) to normal wear parts that require replacement under normal use. Including but not limited to: rubber parts, hoses, and attachments; (ii) to ordinary wear and tear and blockages which occur during use; (iii) to Steamers which have been subject to abuse, misuse, negligence or accident; or (iv) to damage or defects which were caused by unauthorized or improper use, modification, alteration, service or repair.

This warranty is effective only if the Westinghouse Steamer is purchased and operated in the USA or Canada, and does not extend to any units which have been altered or modified

**Implied Warranties:** ANY IMPLIED WARRANTIES WHICH THE PURCHASER MAY HAVE WITH RESPECT TO THE WESTINGHOUSE STEAMER ARE LIMITED IN DURATION TO ONE (1) YEAR FROM THE ORIGINAL PURCHASE DATE. Some states and provinces do not allow limitations on how long an implied warranty lasts, so the above limitation may not apply to you.


**Steamer Warranty Performance:** During the above warranty period, a product with a defect will be either repaired or replaced with a comparable model when the product is returned to Salton. The repaired or replacement product will be in warranty for the balance of the one-year warranty period and an additional one-month period. No charge will be made for such repair or replacement within the warranty period.

**Any questions or comments** can be directed to the Consumer Relations Department.

Please write to or call:  
Consumer Relations Dept.  
P.O. Box 6916  
Columbia, MO 65205-6916  
1-800-616-8689  
E-mail: [Salton@Saltonusa.com](mailto:Salton@Saltonusa.com)

**Limitation of Remedies:** No representative or other person is authorized to assume for us any other liability in connection with the sale of our products. There shall be no claims for defects or failure of performance or product failure under any theory of tort, contract or commercial law including, but not limited to negligence, gross negligence, strict liability, breach of warranty and breach of contract. Repair, replacement or refund shall be the sole remedy of the purchaser under this warranty, and in no event shall Westinghouse be liable for any incidental or consequential damages, losses or expenses. Some states and provinces do not allow the exclusion or limitation of incidental or consequential damages, so the above limitation or exclusion may not apply to you.

**Legal Rights:** This warranty gives you specific legal rights, and you may also have other rights which vary from state to state/province.

™ and "You Can Be Sure...If It's Westinghouse" are trademarks of Westinghouse Electric Corporation and used under license by Salton, Inc. Steamxtreme™ is a registered trademark of Salton, Inc.

For more information on Salton, Inc. products: visit our website: [www.eSalton.com](http://www.eSalton.com)