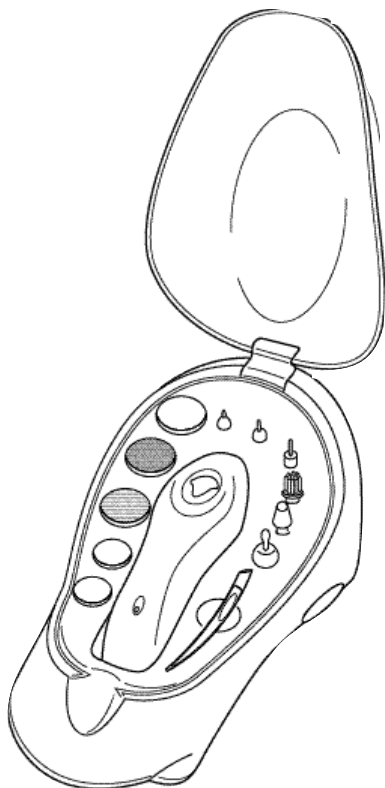


RELAXOR®



Deluxe Manicure/ Pedicure Set

OWNER'S MANUAL &
OPERATING INSTRUCTIONS

Model MP9SD

SPA THERAPY™

IMPORTANT SAFEGUARDS

Please read carefully before using your Nail Care Set

This Manicure/Pedicure Set is designed exclusively for domestic use. To maintain the unit in good operating condition, it is recommended that the appliance to be switched off for 15 minutes after each 20 minute uninterrupted usage.

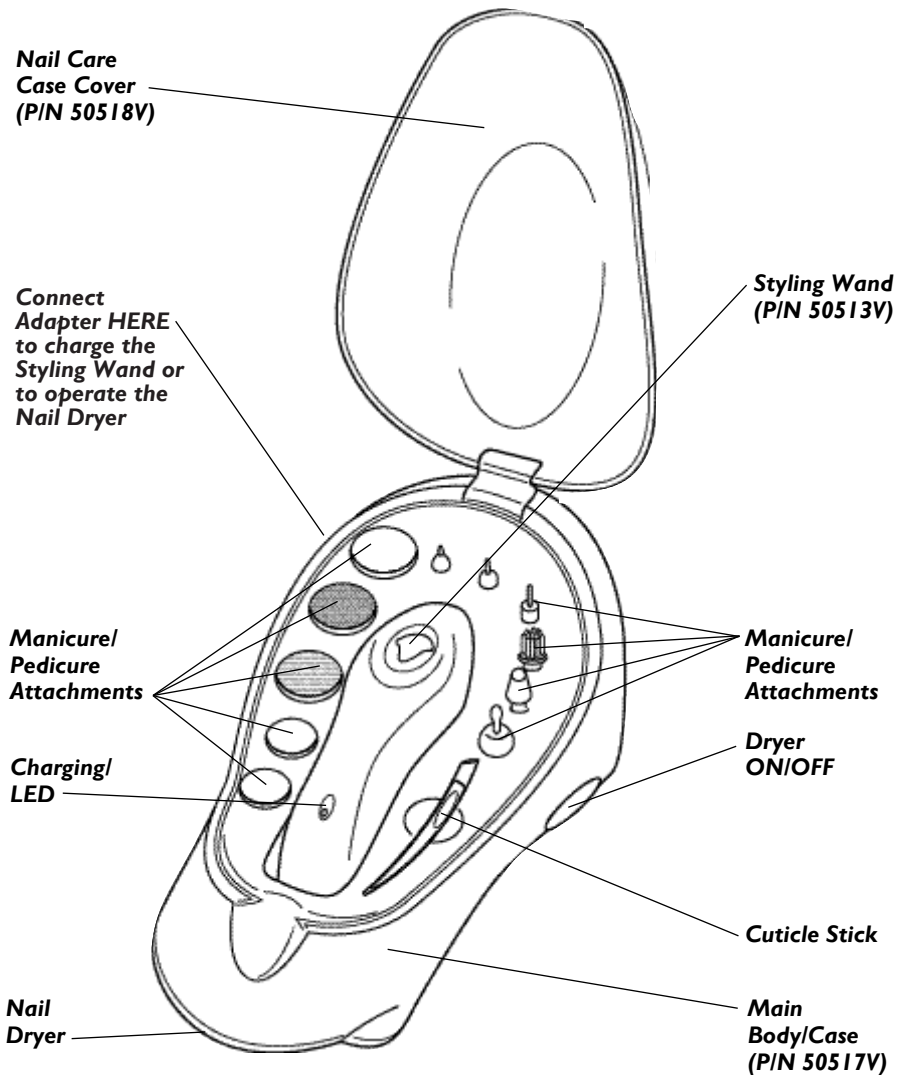
Warning — To Reduce the Risk of Burns, Electrocution, Fire or Injury to Persons:

- 1. Before connecting the unit to the electrical outlet, make sure the voltage on the Adapter's rating plate corresponds to the local voltage.*
- 2. Keep the appliance out of children's reach. Close supervision is necessary when this appliance is used by, on, or near children, invalids or disabled persons.*
- 3. Use this appliance only for its intended use as described in this manual. Do not use any attachments not recommended by the manufacturer.*
- 4. Do not use this appliance when bathing or showering. Do not place or store the unit where it may fall or be pulled into a tub or sink. Do not submerge or drop into water or any other liquid.*
- 5. Do not reach for the appliance if it falls into water: UNPLUG IMMEDIATELY.*
- 6. Do not use under a blanket or a pillow to avoid overheating.*
- 7. Never operate this appliance if it has a damaged cord or plug. See Warranty instructions at the back of this booklet if this product is not working properly, or it has been dropped, damaged, or dropped into water.*
- 8. Keep the appliance and cord away from heated surface.*
- 9. Do not carry the appliance by its power cord or use the cord as a handle.*
- 10. Never use while sleepy or drowsy.*
- 11. Do not use outdoors or operate where aerosol (spray) products are being used or where oxygen is being administered.*
- 12. Do not use if there are open wounds or a rash on fingers or toes.*
- 13. Consult a physician before using this appliance, if you have diabetes or vascular problems.*
- 14. Only use this appliance for its intended use as described in this manual.*

SAVE THESE INSTRUCTIONS FOR HOUSEHOLD USE ONLY

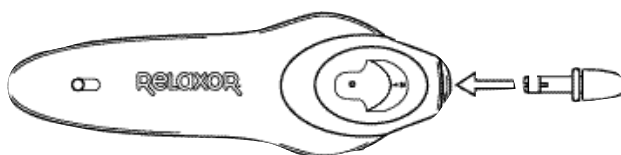
**Congratulations on owning the Relaxor®
Deluxe Manicure/Pedicure Set**

Treat yourself to a sensational manicure or pedicure at home. This Kit has everything you need for shaping, filing, smoothing and polishing nails. With regular use, nails may be healthier. Unit is packed in an attractive compact case for easy storage or portability.



HOW TO USE YOUR MANICURE/PEDICURE SET

NOTE: The Main Body Power Switch must be in the OFF position before connecting and removing Attachments.



Styling Wand (PIN 50513V)

1. Connect the desired Attachment by pushing it firmly into the Main Body.
2. Slide the Power Switch up to 1 (LOW) or 2 (HIGH).
3. When your manicure or pedicure is complete, slide the Power Switch to the 0 (OFF position), then remove Attachment by pulling it off the head of the unit.

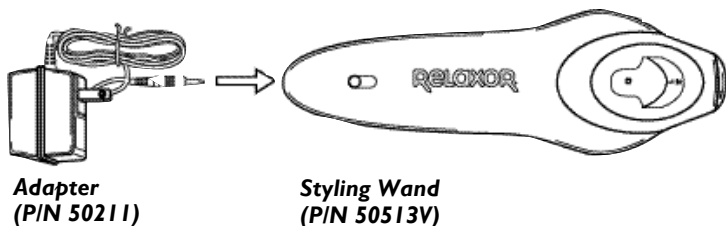
RECHARGE FOR CORDLESS USE

IMPORTANT! BEFORE THE FIRST USE, you must charge the unit for at least 24 hours to ensure that the batteries are fully charged.

1. The Styling Wand charges while resting in the Main Body Case.
2. The normal recharge time is 6 hours for a full charge.
3. To recharge, slide the Power Switch to the 0 (OFF position). Connect the Main Body to the Adapter cord and plug the Adapter into the electrical socket. See illustration on page 6. The Charging LED will illuminate to indicate the unit is charging. Unplug Adapter from unit and wall before use.

DIRECT-DRIVE BY ADAPTER

1. The unit can be used as direct-drive with the Adapter supplied with the unit when the batteries are not charged. **Use only the Adapter (P/N 50211) supplied with this unit.**

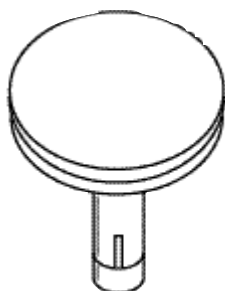


2. Connect the unit to the Adapter cord and plug the Adapter into the electrical socket for direct use.
3. A 30 second charge-up time is required with usage of the direct-drive feature. This enables the unit to run at full power.

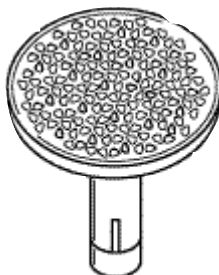
SUGGESTED USE OF MANICURE/PEDICURE ATTACHMENTS



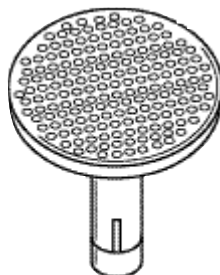
Cuticle Stick
(P/N 50514V)



**Soft, Padded
Buffing Disk**
(P/N 50238V)



Large Skin Smoothing Disks
Rough Disk
(P/N 50239V)



Coarse Disk
(P/N 50240V)



**Cuticle
Shaper**
(P/N 50237V)



**Large
Filing Cone**
(P/N 50515V)



Small Shaping Disks
Fine Disk
(P/N 50241V)



Coarse Disk
(P/N 50242V)



Cleaning Brush
(P/N 50218V)



**Thick Point
Filing Cone**
(P/N 50216V)



**Thin Point
Filing Cone**
(P/N 50217V)



**Ball Point
Filing Cone**
(P/N 50516V)

MANICURE/PEDICURE ATTACHMENTS (Con't.)

NOTE: For better performance of the product, do not soak your nails in water before treatment.

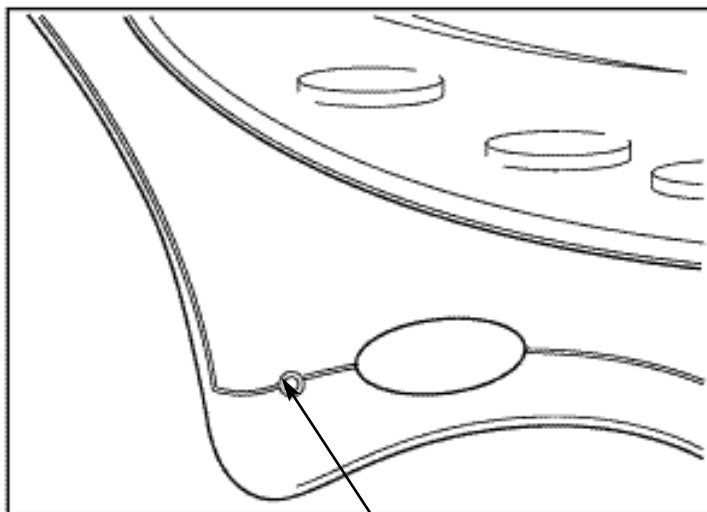
Here are some suggestions on how to use the different Attachments in order to ensure a salon perfect manicure or pedicure.

1. **Large Skin Smoothing Disks:** To remove dead skin from hands and feet. For rough skin use the Rough Disk (jagged edges). For smoother skin use the Coarse Disk (round dots). Lightly apply the Disk to rough skin areas such as the soles and heels of the feet. Move manicure tool in a back and forth motion, gently exfoliating the skin surface.
2. **Large Filing Cone:** Can also be used to shape large surfaces of nails and smooth coarse skin. Gently apply the filing cone to the skin, moving in a back and fourth motion while covering the rough skin areas.
3. **Thick Point Filing Cone:** May be used for all general filing needs.
4. **Thin Point Filing Cone:** Precision filing for hard to reach areas.
5. **Small Shaping Disks:** To file and sculpt nails. For soft or fine nails, use the Fine Filing Disk (fine texture). For thicker, stronger nails use the Coarse Disk (round dots), and finish by using the Fine Filing Disk.
6. **Cuticle Shaper:** Gently apply the Cuticle Shaper, using caution to not allow the tip deep under the skin. Start on one side of the nail and work across to the other side of the nail, then back again.
7. **Cleaning Brush:** Can be used to clean nails at end of filing session. The Brush can also be used to clean away any residual cuticle, and prepare the nail for buffing.
8. **Soft Padded Buffing Disk:** Used to lightly polish the nails at the end of the manicure/pedicure treatment. The Disk can be used to smooth out the filed nails and may add shine.
9. **Cuticle Stick:** Can be used to push back cuticles manually. It can be carried in a purse for quick touch-ups while on the go.
10. **Ball Point Filing Cone:** To file and treat the surface of thick toenails or fingernails.

Finish your treatment by soaking hands in warm, soapy water, and then apply your favorite moisturizer or lotion. This will help to keep hands hydrated and protect nails.

BUILT IN NAIL DRYER

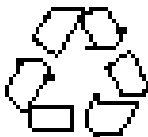
1. Be sure the Adapter is plugged into electrical outlet and connected to the Main Body/Case.
2. Push the On/Off Button located on the side of the unit. Dryer will activate and warm air will blow out of the Nail Dryer located on the front of the unit.
3. Dry nails.
4. When finished, press the On/Off Button a second time to deactivate the Nail Dryer.



Connect Adapter to receptacle located at the left rear of the Main Body to charge Styling Wand or to operate the Nail Dryer.

See illustration on page 2 for location on Main Body/Case.

RECHARGEABLE BATTERY REMOVAL AND RECYCLING



Ni-Cd

INSTRUCTIONS

This Unit is equipped with a long-lasting, Rechargeable Nickel-Cadmium Battery. To protect our environment, it should be removed at the end of the unit's life, for safe disposal in accordance with your local and state requirements. This Battery CANNOT be replaced.

As a service to you, and because we care about the environment, we will recycle your Ni-Cd Battery for you. For more information about this program call 1-800-934-7455.

If you wish to personally recycle your nickel-cadmium batteries, follow the directions provided below. Please DO NOT put the unit or Battery in the trash. Use the collection system provided in your community.

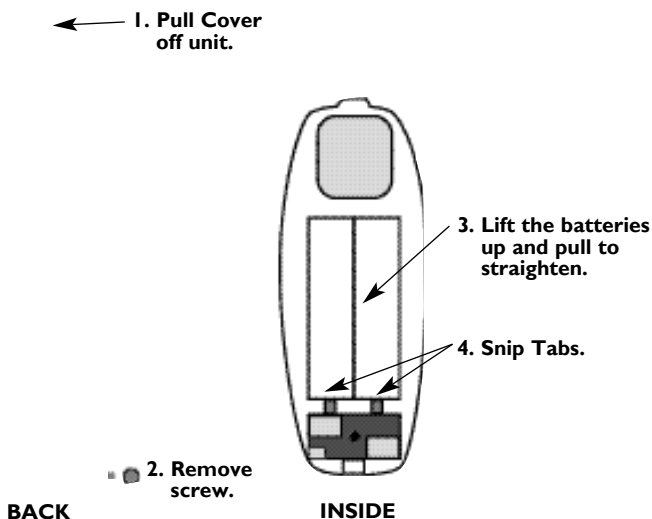
CAUTION: Battery should be removed ONLY WHEN UNIT IS TO BE DISCARDED.

Make sure Unit is unplugged and power is OFF before dismantling for Battery removal.

All servicing or Battery replacement should only be performed by an Authorized Service Location. Battery removal not to be performed by children.

REMOVAL OF NI-CD BATTERY

1. Place the Manicure/Pedicure Styling Wand face up on a non-skid surface such as a rubber mat. (See illustration.)



2. Use a tool with a small pointed tip such as a phillips screwdriver to pry the small Cap off the back of the unit.
3. Remove the screw on the bottom of the Wand with a phillips screwdriver.
4. Pull the Cover off the top of the unit and separate the Housing.
5. Lift the batteries up and pull to straighten Tabs.
6. Snip Tabs off with scissors.
7. Once the Battery is removed, cover each end of the Battery with tape or place in a plastic bag and take to a Recycling Center. Or call us at 1-800-934-7455 for information about our recycling program.

LIMITED ONE YEAR WARRANTY

Warranty: This Relaxor® product is warranted by Salton, Inc. to be free from defects in materials or workmanship for a period of (1) year from the original purchase date. This product warranty covers only the original consumer purchaser of the product.

Warranty Coverage: This warranty is void if the product has been damaged by accident in shipment, unreasonable use, misuse, neglect, improper service, commercial use, repairs by unauthorized personnel, normal wear and tear, improper assembly, installation or maintenance abuse or other causes not arising out of defects in materials or workmanship. This warranty is effective only if the product is purchased and operated in the USA, and does not extend to any units which have been used in violation of written instructions furnished by with the product or to units which have been altered or modified or to damage to products or parts thereof which have had the serial number removed, altered, defaced or rendered illegible.

Implied Warranties: ANY IMPLIED WARRANTIES WHICH THE PURCHASER MAY HAVE ARE LIMITED IN DURATION TO ONE (1) YEAR FROM THE DATE OF PURCHASE. Some states do not allow limitations on how long an implied warranty lasts, so the above limitation may not apply to you.

Warranty Performance: During the above one-year warranty period, a product with a defect will be either repaired or replaced with a reconditioned comparable model (at our option) when the product is returned to the Repair Center, or the purchase price refunded. The repaired or replacement product will be in warranty for the balance of the one-year warranty period and an additional one-month period. No charge will be made for such repair or replacement.

Service and Repair: Should the appliance malfunction, you should first call toll-free 1 (800) 233-9054 between the hours of 9:00 am and 5:00 pm Central Standard Time and ask for CONSUMER SERVICE stating that you are a consumer with a problem. Please refer to model number MP9SD when you call.

In-Warranty Service (USA): For an appliance covered under the warranty period, no charge is made for service or postage. Call for return authorization 1 (800) 233-9054.

Out-of Warranty Service: A flat rate charge by model is made for out-of-warranty service. Include \$6.00 (U.S.) for return shipping and handling. We will notify you by mail of the amount of the charge for service and require you to pay in advance for the repair or replacement.

For Products Purchased in the USA, but Used in Canada: You may return the product insured, packaged with sufficient protection, and postage and insurance prepaid to the USA address listed below. Please note that all customs duty / brokerage fees, if any, must be paid by you and we will require you to pay the cost of customs duty / brokerage fees to us in advance of our performing any service.

Risk During Shipment: We cannot assume responsibility for loss or damage during incoming shipment. For your protection, carefully package the product for shipment and insure it with the carrier. Be sure to enclose the following items with your appliance: any accessories related to your problem, your full return address and daytime phone number, a note describing the problem you experienced, a copy of your sales receipt or other proof of purchase to determine warranty status. C.O.D. shipments cannot be accepted.

To return the appliance, ship to:

ATTN: Repair Center
Salton, Inc.
708 South Missouri Street
Macon, MO 63552

To contact us, please write to, call, or email:

Salton, Inc.
P.O. Box 1637
Columbia, MO 65205-1637
1-800-233-9054
E-mail: Salton@Saltonusa.com

Limitation of Remedies: No representative or person is authorized to assume for Salton, Inc. any other liability in connection with the sale of our products. There shall be no claims for defects or failure of performance or product failure under any theory of tort, contract or commercial law including, but not limited to negligence, gross negligence, strict liability, breach of warranty and breach of contract. Repair, replacement or refund shall be the sole remedy of the purchaser under this warranty, and in no event shall Salton be liable for any incidental or consequential damages, losses or expenses. Some states do not allow the exclusion or limitation of incidental or consequential damages, so the above limitation or exclusion may not apply to you.

Legal Rights: This warranty gives you specific legal rights, and you may also have other rights which vary from state to state.

For more information on Salton products: visit our website: www.eSalton.com

©2003 Salton, Inc. All rights reserved.

Made in China

P/N 61215

1/03