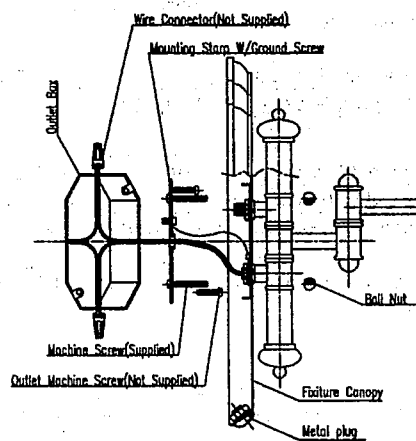
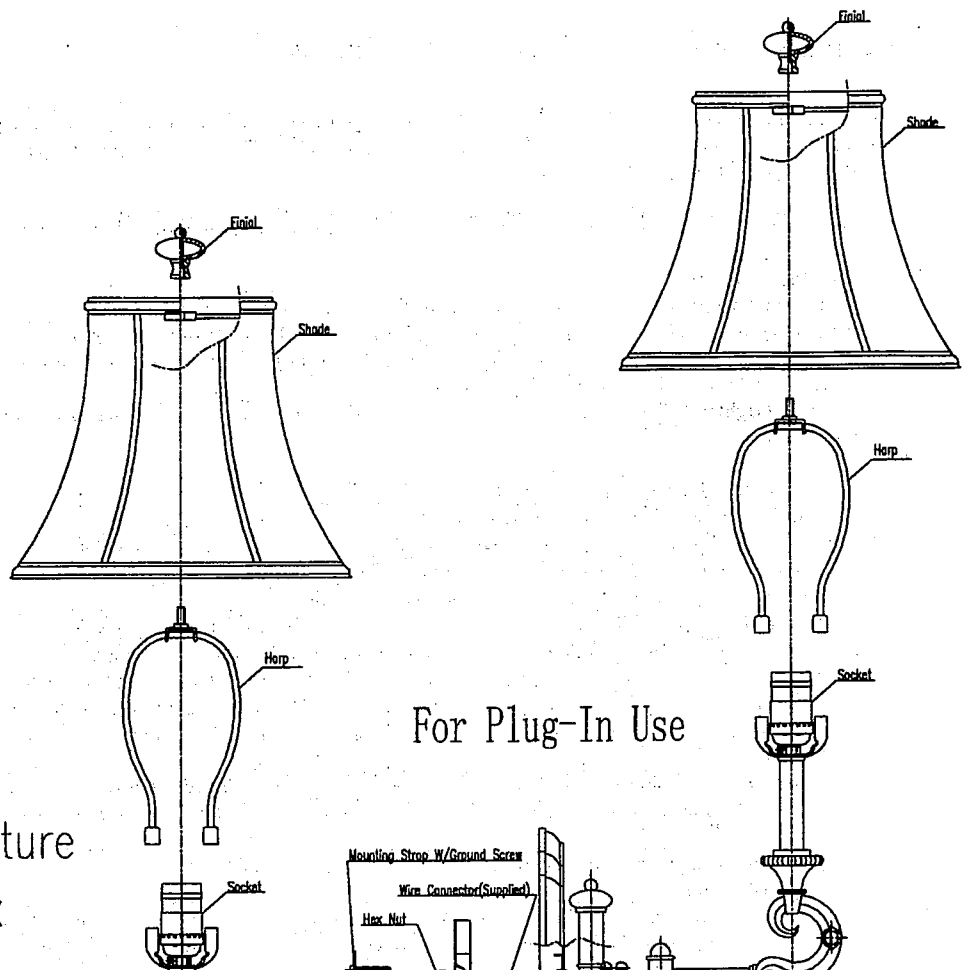
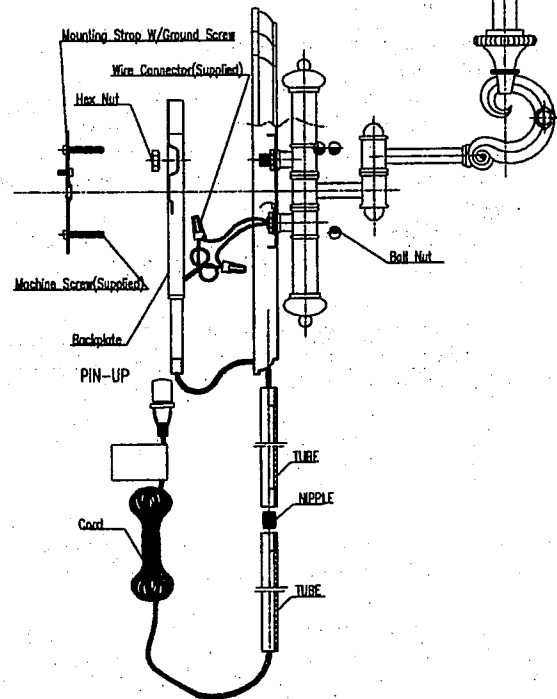


# Model SDW5103AB Instructions

For Hardwiring Fixture  
to Wall Outlet Box



For Plug-In Use



## Model SDW5103AB Instructions

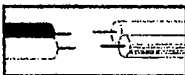
### General assembly and installation instructions:

1. Read and understand all instructions and illustrations completely before proceeding with assembly and installation of this fixture.
2. If you have any doubts about how to install this lighting fixture, or if the fixture fails to operate completely, please contact a qualified licensed electrical contractor.

If this item is to be for Plug-in Use, follow step 3. If this item will be Hardwired to wall outlet box, proceed to step 4.

3. Prepare the fixture for Plug-in Use:
  - a) Secure the backplate to the fixture canopy with the hex nut as illustrated
  - b) Attach the two tubes with the threaded nipple and tighten to the protruding tube at the bottom of the backplate
  - c) With the machine screws attached to the mounting strap protruding outward, secure the mounting strap to the wall (using 2 screws and 2 plastic wall-plugs, not provided)
  - d) Align and tighten the fixture to the 2 protruding machine screws on the mounting strap with the 2 ball nuts
  - e) Proceed to step 13
4. Prepare the fixture for Hardwiring to wall outlet box:
  - a) Loosen the wire connectors to free the fixture lead wire from the backplate wires
  - b) Unknot the backplate wire and pull the wire out through the bottom of the backplate tube and the bottom of the fixture canopy.
  - c) Use the metal plug to conceal the hole at the bottom of the canopy
  - d) Discard the backplate, tubes, and cord intended for Plug-in Use
5. All parts must be used as indicated in these instructions. Do not substitute any parts, leave parts out, or use any parts that are worn out or broken. Failure to obey this instruction could invalidate the UL listing and/or CSA certification of this fixture.
6. **IMPORTANT:** Before you start, **NEVER** attempt any work without shutting off the electricity until the work is done.
  - a) Go to the main fuse, or circuit breaker, box in your home. Place the main power switch in the "OFF" position.
  - b) Unscrew the fuse(s), or switch "OFF" the circuit breaker switch(s), that control the power to the fixture or room that you are working on.
  - c) Place the wall switch in the "OFF" position. If the fixture to be replaced has a switch or pull chain, place those in the "OFF" position.
7. Remove old fixture from the outlet box, saving the wire connectors and machine screws that connect the mounting strap to the outlet box.
8. Connect the mounting strap, with the old machine screws, to the outlet box.
9. Grounding Instructions:
  - a) For installation in the United States: Wrap ground wire from outlet box around outlet box around green ground screw on mounting strap, no less than 2" from wire end. Tighten ground screw. If fixture is supplied with a ground wire, connect to outlet ground wire with the old fixture wire connector.
  - b) For installation in Canada: If fixture is supplied with ground wire, wrap ground wire around green grounding screw on mounting strap. Tighten ground screw.
10. Make wire connections, with the old fixture wire connectors, following the reference chart listed below.

Connect, Hot, Black or Red Outlet Supply Wire to:	Connect, Neutral, White Outlet Supply Wire to:
Black	White
*Parallel cord (round & smooth)	*Parallel Cord (square & ridged)
Clear, Brown, Gold or Black without Tracer (colored stripes)	Clear, Brown, Gold or Black with Tracer (colored stripes)
Insulated Wire (not green) with copper metal conductor	Insulated Wire (not green) with Silver metal conductor



\*Note: When parallel wire (SPT I & SPT II) is used. The neutral wire is square shaped and ridged and the hot wire will be round in shape and smooth. (See Illustration on left.)

11. Pass canopy over protruding machine screws, from the mounting strap.
12. Attach the threaded ball nuts onto protruding machine screws. Tighten ball nuts until fixture is mounted firmly against wall.
13. Squeeze the shade harp onto the socket harness.
14. Secure the shade onto the harp with the finial
15. Insert bulb(s). Be sure to use light bulb(s) with wattage no greater than specified on this fixture. Always make sure that electrical current is turned off before changing bulbs.
16. For cleaning:
  - a) Always be certain that electric current is turned off before cleaning.
  - b) Use a soft moist cloth with mild non-abrasive soap to clean fixture. Never use glass cleaner on fixture, as it will damage the metal finish.
  - c) All glass shades may be washed in a towel-lined sink with warm water and mild soap. Do not wash shades in an automatic dishwasher.