

S+ARCK[®]

USE AND CARE MANUAL

**CURLING WAND SET
WITH 3 INTERCHANGEABLE IRONS
AND STORAGE BOX
Model PS603**

IMPORTANT SAFEGUARDS

When using electrical appliances, especially when children are present, basic safety precautions should always be followed, including the following:

READ ALL INSTRUCTIONS BEFORE USING.

KEEP AWAY FROM WATER.

DANGER: As with most electrical appliances, electrical parts are electrically live even when the switch is off.

To reduce the risk of death by electrical shock:

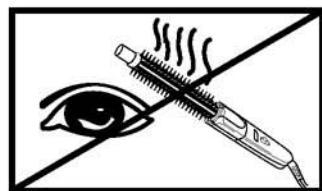
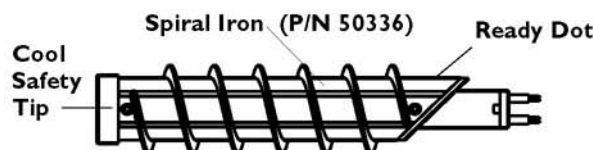
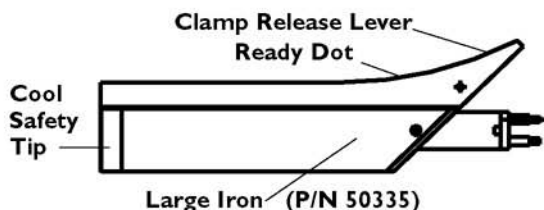
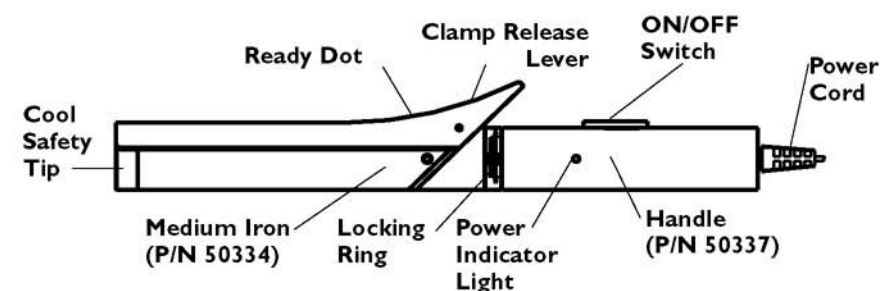
1. Always "unplug it" immediately after using.
2. Do not use while bathing.
3. Do not place or store appliance where it can fall or can be pulled into tub or sink.
4. Do not place in or drop into water or other liquid.
5. If an appliance falls into water, "unplug it" immediately. Do not reach into the water.

WARNING: TO REDUCE THE RISK OF BURNS, ELECTROCUTION. FIRE OR INJURY TO PERSONS:

1. An appliance should never be left unattended when plugged in.
2. Close supervision is necessary when this appliance is used by, on, or near children or invalids.
3. Use this appliance only for its intended use as described in this manual. Do not use attachments not recommended by the manufacturer.
4. Never operate this appliance if it has a damaged cord or plug, if it is not working properly, if it has been dropped or damaged, or dropped into water. Return the appliance to the nearest service facility for examination and repair.
5. Keep the cord away from hot or heated surfaces. Do not wrap the cord around the appliance.
6. Never use while sleeping or while drowsy.
7. Never drop or insert any object into any opening.
8. Do not use outdoors or operate where aerosol (spray) products are being used. Do not operate where oxygen is being administered.
9. This appliance is hot when in use. Do not let eyes and bare skin touch heated surfaces.
10. Do not place the heated appliance directly on any surface while it is hot or plugged in. Use the Stand provided.
11. Do not use an extension cord with this appliance.

SAVE THESE INSTRUCTIONS FOR HOUSEHOLD USE ONLY

GETTING TO KNOW YOUR CURLING WAND SET



CAUTION: THIS PRODUCT CAN BURN EYES

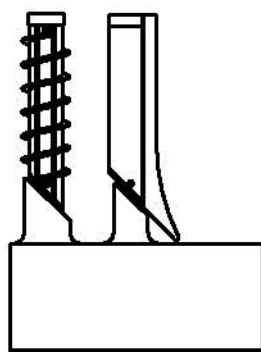


KEEP AWAY FROM CHILDREN

Polarized Plug

This appliance has a polarized plug (one blade is wider than the other). To reduce the risk of electric shock, this plug is intended to fit into a polarized outlet only one way. If the plug does not fit fully in the outlet, reverse the plug. If it still does not fit, contact a qualified electrician. Do not attempt to defeat this safety feature.

HOW TO USE YOUR INTERCHANGEABLE CURLING IRON WANDS



Storage Box Cover:
(P/N 50339)

Storage Box Base:
(P/N 50338)

Use the Storage Box / Stand to keep your Curling Iron Wands at your convenience.

IMPORTANT

During the first few minutes of initial use, you may notice smoke and a slight odor. This is normal and will quickly disappear.

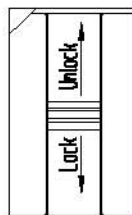
WARNING: The Barrel of this Curling Iron is hot. Care should be taken when using.

- Keep unit away from contact with all skin areas. Do not touch Iron Barrel with fingertips.
- For shorter hair, place a thin plastic comb between scalp and Curling Iron Barrel to avoid touching scalp.
- Test on a small section of hair before using.

To Change Curling Iron Wands

ALWAYS BE SURE CURLING IRON IS COOL BEFORE CHANGING WANDS.

Turn the Locking Ring in the direction of the arrow shown to release Iron. Replace Iron by inserting Iron into the Handle, and turning the Handle to lock.



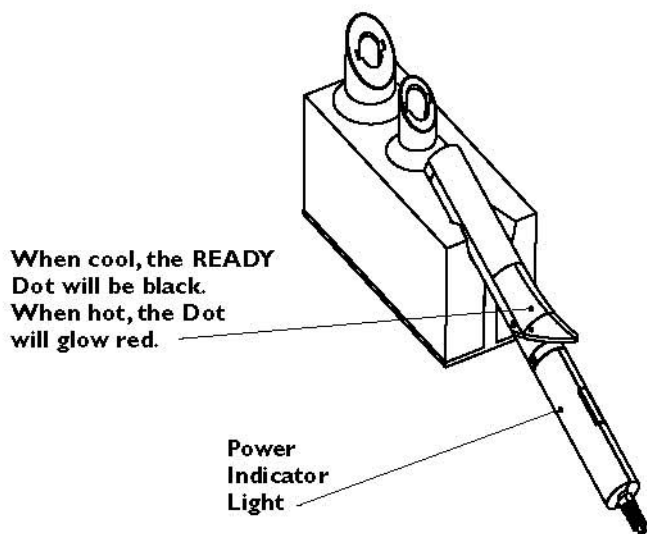
Locking Ring

HOW TO USE YOUR CURLING IRON (Continued)

To Use Curling Iron Wands

Choose the particular Wand you wish to style your hair with, depending on the effect you wish to achieve. For a complete styling, hair should be clean, dry and free from dirt, hair spray, creams, etc. (This Iron can also be used for quick touch-ups any time.)

PRE-HEAT: Rest the Curling Iron in its Stand, on a smooth, and heat-resistant, flat surface. Plug the unit into a 120V AC electrical outlet. Slide the ON/OFF Button to the ON position, and allow Iron to heat. The Power Indicator Light will glow, letting you know the unit is operating. When cool, the READY Dot on the Clamp Release Lever "tongue tip" will be black. When hot, the Dot will glow red.



STYLING: Start by sectioning hair into strands no more than 2 inches wide.

Keep the hair strand smooth by brushing or combing through the section while holding the ends taut with the other hand.

Taking one section at a time, place the ends of hair over the Barrel with the Clamp open. Then close the Clamp, making sure that the ends extend just a tiny bit beyond the Clamp. Grasp the Cool Safety Tip with the other hand to roll hair.

HOW TO USE YOUR CURLING IRON (Continued)

Keep the section of hair taut as you wind it around the hot Barrel by slowly turning the Handle. Wind the curl toward your scalp as far as you wish to go without touching scalp with the hot Barrel.

Hold the curl in place for up to 8 to 12 seconds for tight curls or if hair is hard to curl. Hold for less time if hair is easy to curl, or if you want loose curls or just waves. When you are ready to release curl, unwind about half a turn (for longer hair, unwind a bit more) and push down on the Clamp release lever to open the Clamp. Now, gently withdraw the Barrel from the center of curl. Allow curl to cool, and try not to disturb curls as you proceed in the same manner around whole head.

When completely finished, and all curls have cooled thoroughly, gently brush and comb hair into the style you wish.

STYLING TIP: For bouncy, flip-up curls, the Clamp should be **under** and the Barrel **over** the section of hair at the start of curl. For curl-under, page-boy styles, the Clamp should be **over** and the Barrel **under** the hair section at the start of curl.

FOR TOUSLED HAIR: Create soft, tousled waves by curling each hair section in a random direction. Then, turn head upside down, shake and gently scrunch hair with fingers. Bring head back to position and repeat for fullest volume.

SPIRALS: Wind up a section of hair holding the Spiral Iron vertically for up to 8 to 12 seconds for tight curls or if hair is hard to curl. Hold for less time if hair is easy to curl. When you are ready to release curl, unwind slowly; gently withdraw the Barrel from the center of curl. Allow curl to cool, and try not to disturb curls as you proceed in the same manner around whole head.

USER MAINTENANCE INSTRUCTIONS

To keep your Curling Irons in good condition, be sure to read these instructions carefully and save them for future reference.

WARNING: ALWAYS BE SURE CURLING IRON IS COOL BEFORE CLEANING.

1. To clean the outside of the Curling Iron, make sure the unit is unplugged. Then wipe plastic surfaces with a damp, soapy sponge. With extended use, the Barrel of your Curling Iron may get dusty or dirty from your hair's natural oils or conditioners. To clean the Barrel, use a sponge with a small amount of shampoo. Let the Curling Iron dry thoroughly before you use it again. **DO NOT IMMERSE IN WATER!** To keep the Barrel clean longer, do not spray hairspray directly on the Barrel.
2. This product is for household use only and contains no user serviceable parts.
3. When not in use, store the Curling Iron and Interchangeable Wands in the original box or in a clean, dry place where it will not become damaged.
4. Never wrap the cord around the appliance.

LIMITED ONE YEAR WARRANTY

Warranty: This product is warranted by Salton, Inc. to be free from defects in materials or workmanship for a period of (1) year from the original purchase date. This product warranty covers only the original consumer purchaser of the product.

Warranty Coverage: This warranty is void if the product has been damaged by accident in shipment, unreasonable use, misuse, neglect, improper service, commercial use, repairs by unauthorized personnel, normal wear and tear, improper assembly, installation or maintenance abuse or other causes not arising out of defects in materials or workmanship. This warranty is effective only if the product is purchased and operated in the USA, and does not extend to any units which have been used in violation of written instructions furnished with the product or to units which have been altered or modified or to damage to products or parts thereof which have had the serial number removed, altered, defaced or rendered illegible.

Implied Warranties: ANY IMPLIED WARRANTIES WHICH THE PURCHASER MAY HAVE ARE LIMITED IN DURATION TO ONE (1) YEAR FROM THE DATE OF PURCHASE. Some states do not allow limitations on how long an implied warranty lasts, so the above limitation may not apply to you.

Warranty Performance: During the above one-year warranty period, a product with a defect will be either repaired or replaced with a reconditioned comparable model (at our option) when the product is returned to the Repair Center, or the purchase price refunded. The repaired or replacement product will be in warranty for the balance of the one-year warranty period and an additional one-month period. No charge will be made for such repair or replacement.

Service and Repair: Should the appliance malfunction, you should first call toll-free 1 (800) 934-7455 between the hours of 9:00 am and 5:00 pm Central Standard Time and ask for CONSUMER SERVICE stating that you are a consumer with a problem. Please refer to model number PS603 when you call.

In-Warranty Service (USA): For an appliance covered under the warranty period, no charge is made for service or postage. Call for return authorization 1 (800) 934-7455.

Out-of-Warranty Service: A flat rate charge by model is made for out-of-warranty service. Include \$8.00 (U.S.) for return shipping and handling. We will notify you by mail of the amount of the charge for service and require you to pay in advance for the repair or replacement.

For Products Purchased in the USA, but Used in Canada: You may return the product insured, packaged with sufficient protection, and postage and insurance prepaid to the USA address listed below. Please note that all customs duty / brokerage fees, if any, must be paid by you and we will require you to pay the cost of customs duty / brokerage fees to us in advance of our performing any service.

Risk During Shipment: We cannot assume responsibility for loss or damage during incoming shipment. For your protection, carefully package the product for shipment and insure it with the carrier. Be sure to enclose the following items with your appliance: any accessories related to your problem, your full return address and daytime phone number, a note describing the problem you experienced, a copy of your sales receipt or other proof of purchase to determine warranty status. C.O.D. shipments cannot be accepted.

To return the appliance, ship to:

ATTN: Repair Center
Salton, Inc.
708 South Missouri Street
Macon, MO 63552

To contact us, please write to, call, or email:

Salton, Inc.
P.O. Box 7366
Columbia, MO 65205-7366
1 (800) 934-7455
E-mail: Salton@Saltonusa.com

Limitation of Remedies: No representative or person is authorized to assume for Salton, Inc. any other liability in connection with the sale of our products. There shall be no claims for defects or failure of performance or product failure under any theory of tort, contract or commercial law including, but not limited to negligence, gross negligence, strict liability, breach of warranty and breach of contract. Repair, replacement or refund shall be the sole remedy of the purchaser under this warranty, and **in no event shall Salton be liable for any incidental or consequential damages, losses or expenses.** Some states do not allow the exclusion or limitation of incidental or consequential damages, so the above limitation or exclusion may not apply to you.

Legal Rights: This warranty gives you specific legal rights, and you may also have other rights which vary from state to state.

For more information on Salton products: visit our website: www.salton-maxim.com

